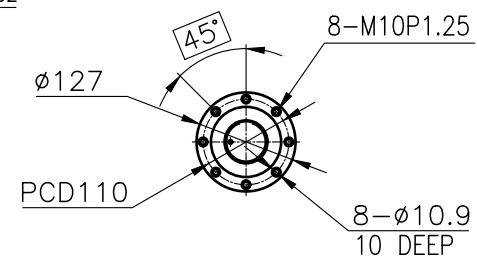
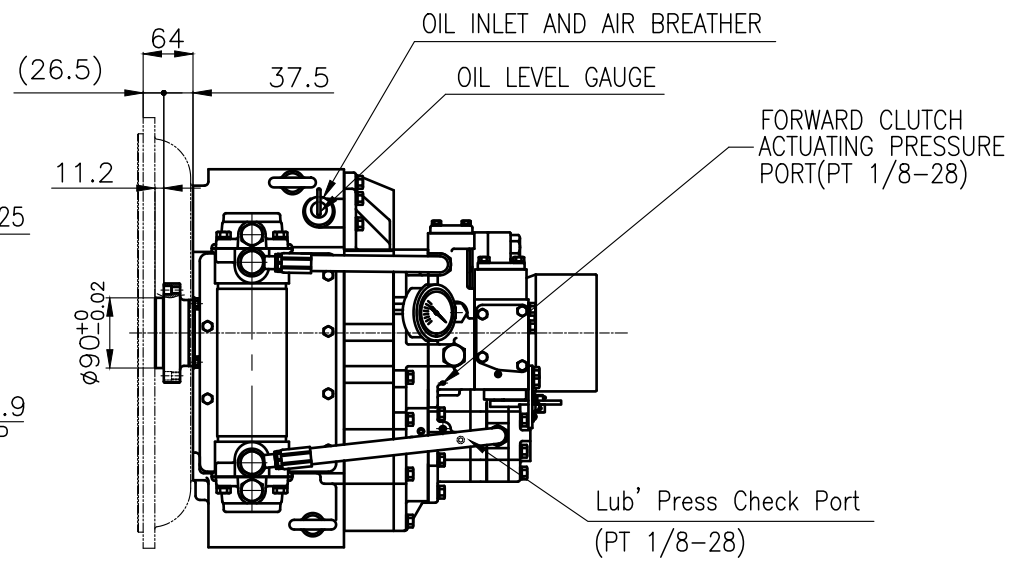


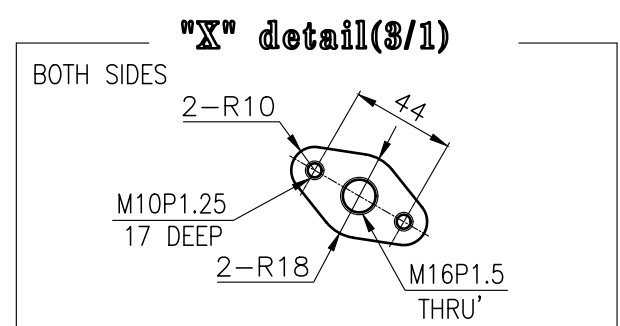
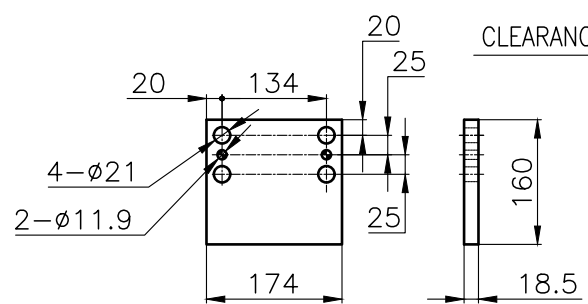
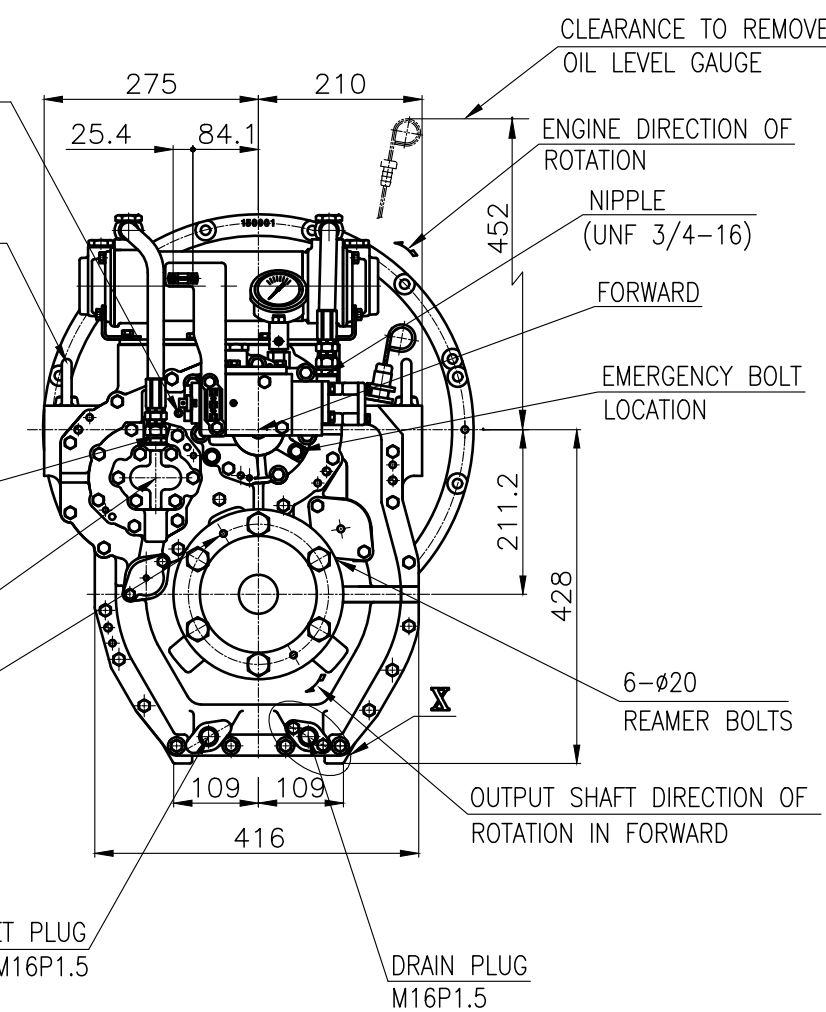
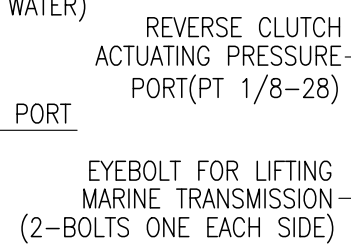
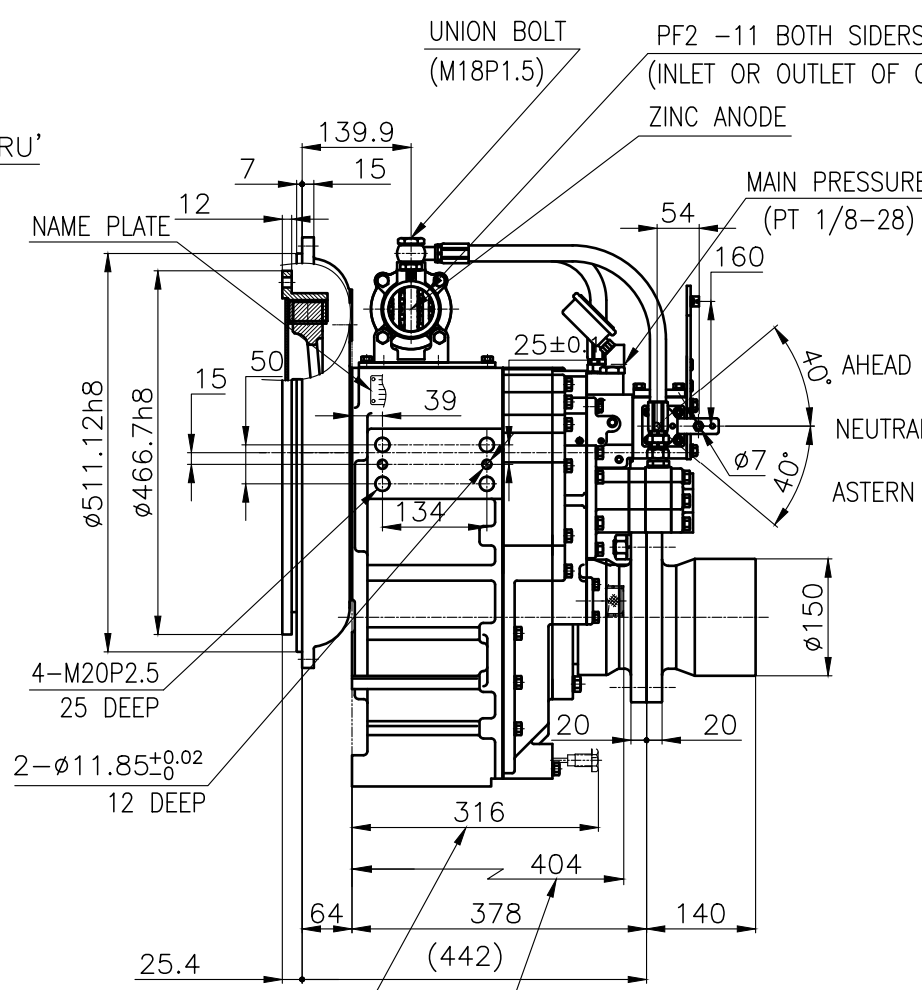
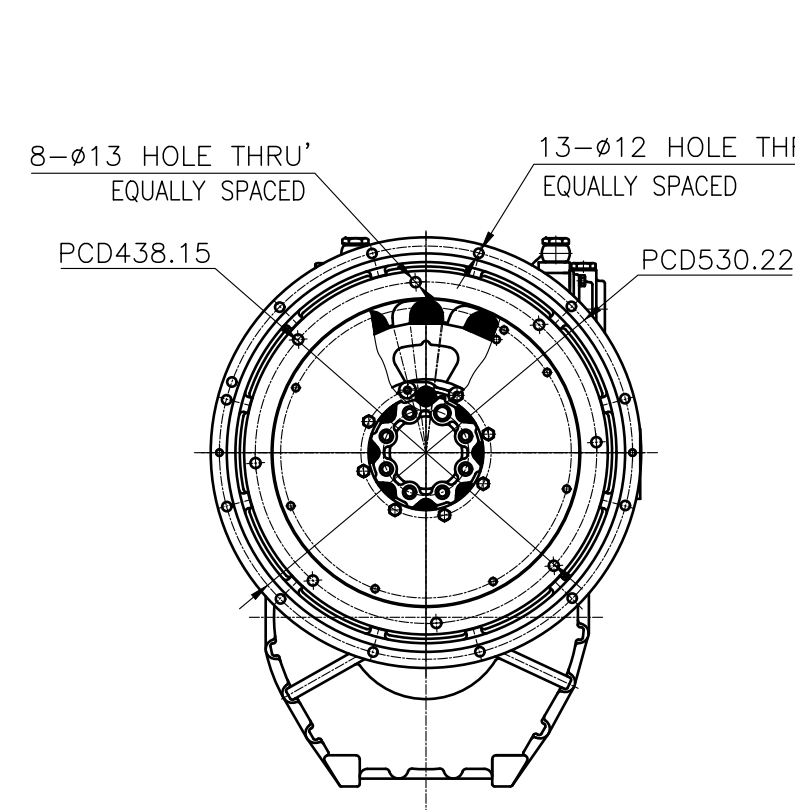
OUTPUT SHAFT COUPLING &  
PROPELLER COUPLING DIMENSION



INPUT COUPLING  
DIMENSION



DMT 150H MARINE TRANSMISSION SPECIFICATION			
GEAR RATIO	1.83, 2.09 , 2.51 , 3.08 , 3.43		
TOTAL WEIGHT	APPROX. 287 kg(DRY)		
OIL CAPACITY	APPROX. 5.5 L		
OIL VISCOSITY	SAE # 30		
OIL PRESSURE	1.96 ~ 2.35 MPa	CLUTCH OIL	
DIRECTION OF ROTATION IN FORWARD	INPUT	C.C.W VIEWED FROM THE STERN	
	OUTPUT	C.W VIEWED FROM THE STERN	
OIL CHANGE INTERVAL	THE FIRST 100HOURS OF INITIAL OPERATION		
	AND EVERY 1000HOURS THEREAFTER		
SHIFTING LIMIT	UNDER 50% OF THE RATED ENGINE SPEED		
OIL COOLER	WATER FLOW 40 ~ 60L/min		
	TEMPERATURE OF COOLING WATER		MAX 32°C
OPERATING TORQUE OF SHIFTING LEVER			UNDER 2.94Nm



REMARK (HOT)  
1.HOUSING: SAE#1  
2.DRIVING RING: SAE 14"  
3.COUPLING TYPE : DUAL STAGE  
4.APPLICATION ENGINE : STANDARD

公差 TOLERANCE ON				번호	품	명	개	재	규	비
분수	소수	각도		NO.	PART NO.	PART NAME	QTY	MATERIAL	SIZE	REMARKS
±	±	±								
1 초과 4 이하	± 0.3	± 0.1	± 0.05	작성 DATE	2018.06.29	척도 SCALE	1/1	형식 TYPE	DMT150H	원도 번호 ORIGINAL DWG. NO.
4	± 0.5	± 0.2	± 0.07	인	검	제	설	품명 NAME	MARINE TRANSMISSION	개정 (REV.)
16	± 0.7	± 0.3	± 0.1	승	도	도	계	도	15100GA~E-114DCH	000
63	± 1.2	± 0.5	± 0.2	인	도	도	계	도	15100GA~E-114DCH	000
250	± 2.0	± 0.8	± 0.3	승	도	도	계	도	15100GA~E-114DCH	000
1000	± 2.0	± 0.8	± 0.3	승	도	도	계	도	15100GA~E-114DCH	000
D-I INDUSTRIAL				크기 SIZE	A 3	코드 번호 CODE ID. NO.				