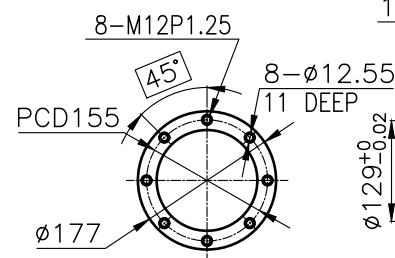
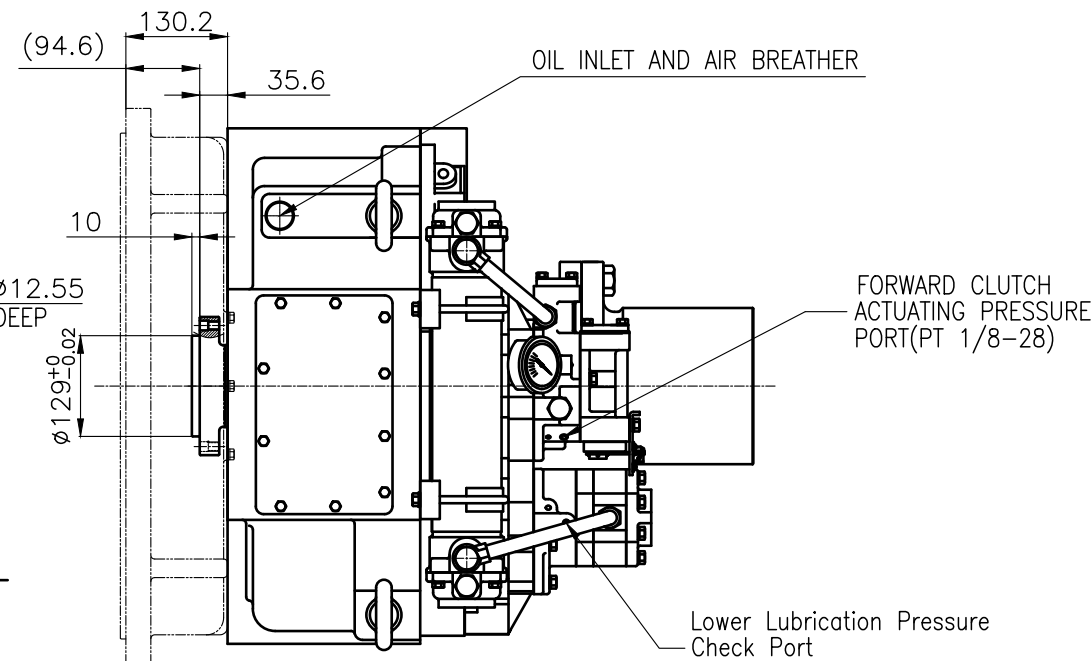


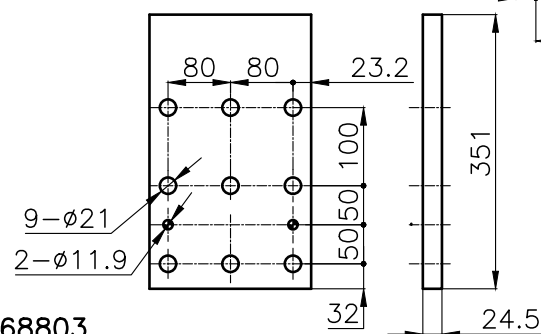
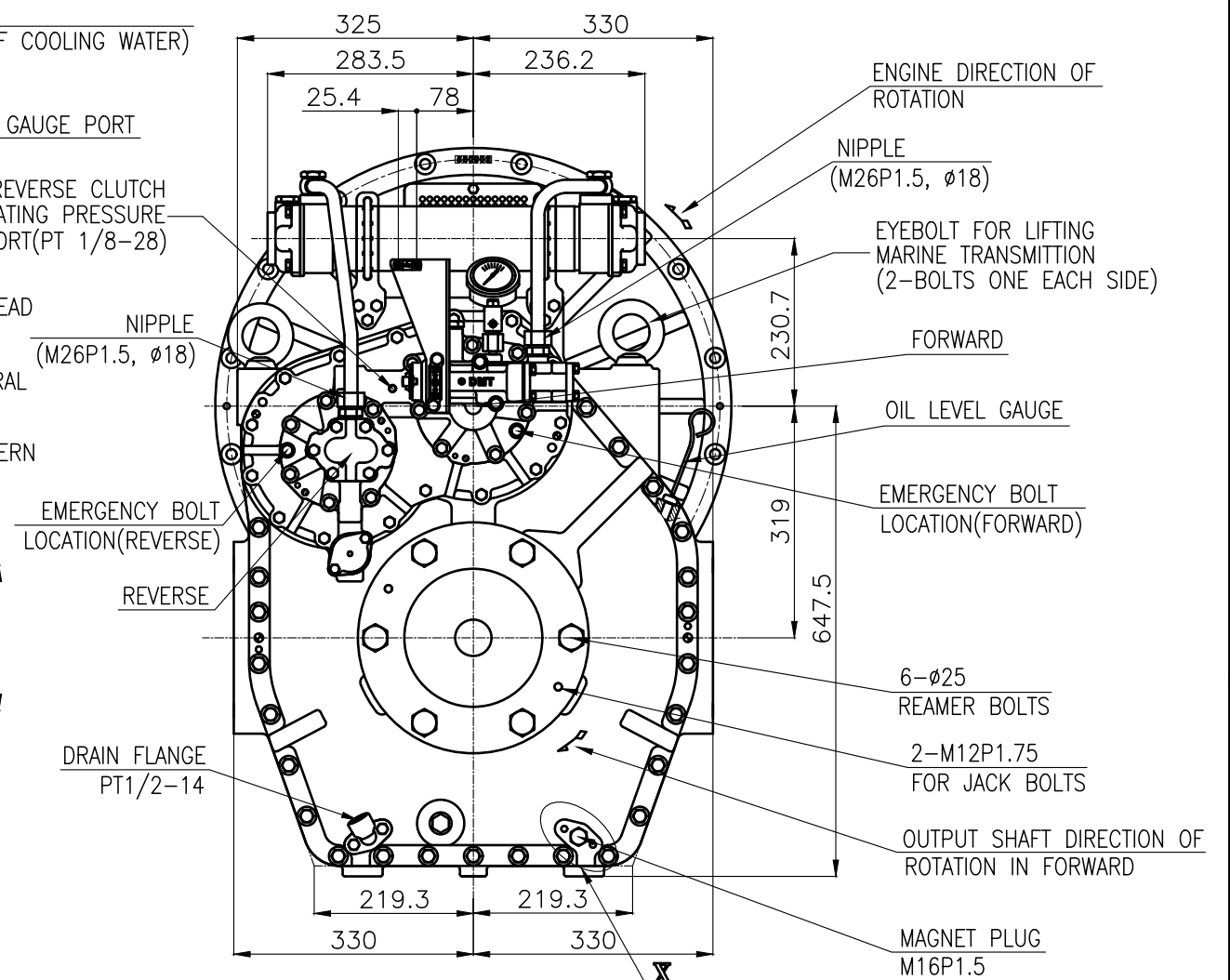
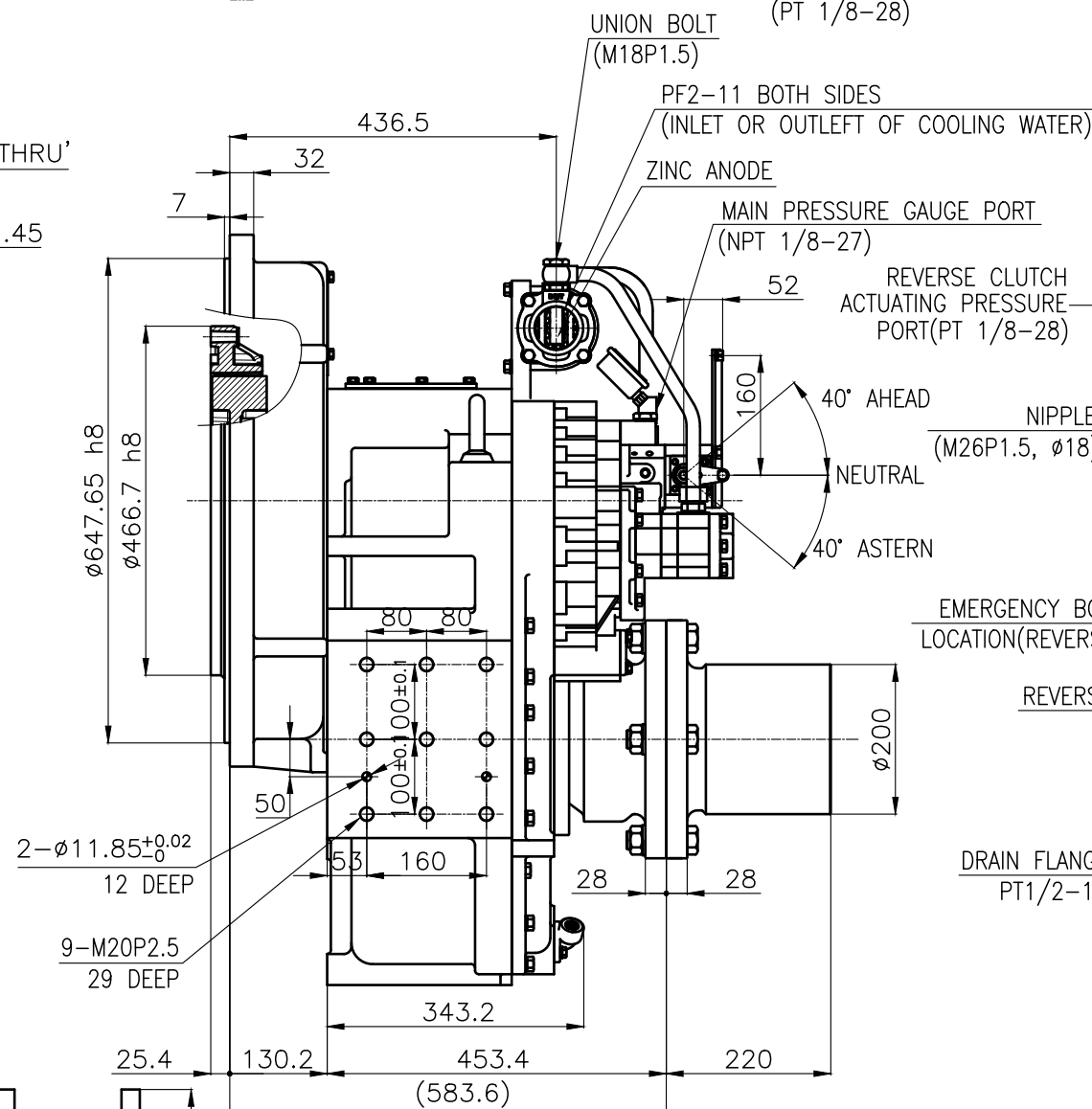
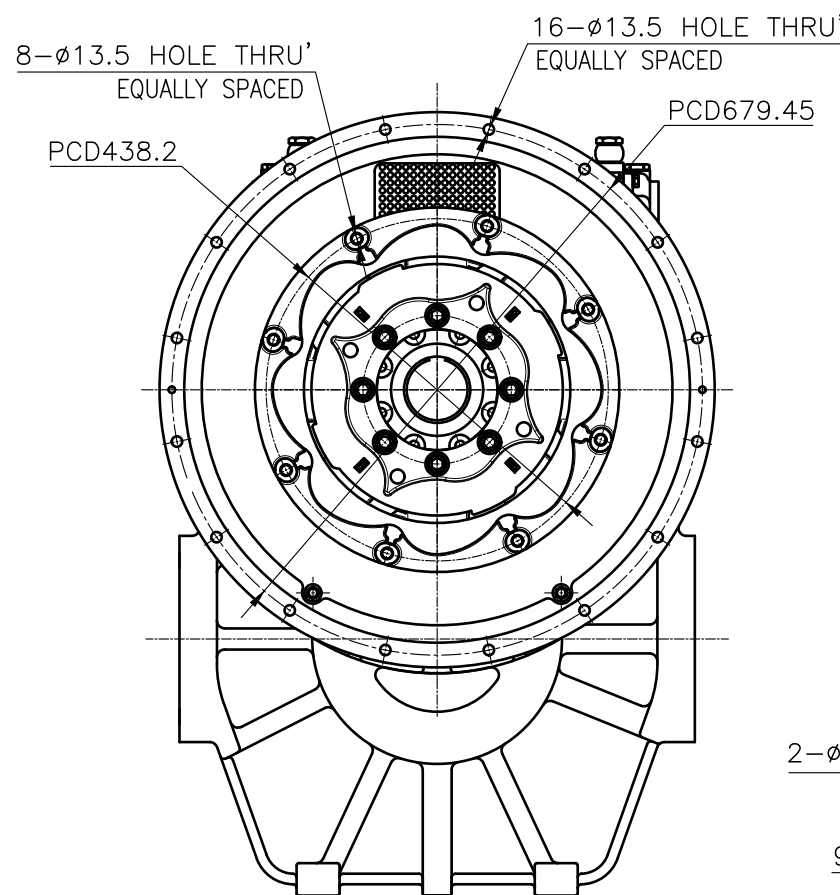
OUTPUT SHAFT COUPLING & PROPELLER COUPLING DIMENSION



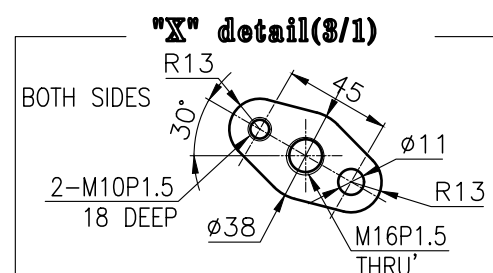
INPUT COUPLING DIMENSION



DMT300HL MARINE TRANSMISSION SPECIFICATION			
GEAR RATIO	2.61, 3.10, 3.56, 4.13, 4.59		
TOTAL WEIGHT	APPROX. 787 Kg(DRY)		
OIL CAPACITY	APPROX. 16.5 L		
OIL VISCOSITY	SAE #30		
OIL PRESSURE	1.96 ~ 2.54 MPa	CLUTCH OIL	
DIRECTION OF ROTATION IN FORWARD	INPUT	C.C.W VIEWED FROM THE STERN	
	OUTPUT	C.W VIEWED FROM THE STERN	
OIL CHANGE INTERVAL	THE FIRST 100HOURS OF INITIAL OPERATION		
	AND EVERY 1000HOURS THEREAFTER		
SHIFTING LIMIT	UNDER 50% OF THE RATED ENGINE SPEED		
OIL COOLER	WATER FLOW 90 ~ 120L/m		
	TEMPERATURE OF COOLING WATER		MAX 32°
OPERATING TORQUE OF SHIFTING LEVER			UNDER 2.94Nm




BRACKET DIMENSION



REMARK

1.HOUSING : SAE# 0	<u>9-ø2</u>
2.DRIVING RING : SAE 14"	<u>2-ø1</u>
3.COUPLING TYPE	
-CENTA Flex Coupling : 77268803	

허용 공차 TOLERANCE ON 분수 FRACTIONS 소수 DECIMALS 각도 ANGLES ± ± ±		번호 NO. 품명 PART NO. 품명 PART NAME		개수 Q'TY	재질 MATERIAL	규격 SIZE	비고 REMARKS
정밀도 1 초과 4 이하 ± 0.3 ± 0.1 ± 0.05 4 16 ± 0.5 ± 0.2 ± 0.07 16 63 ± 0.7 ± 0.3 ± 0.1 63 250 ± 1.2 ± 0.5 ± 0.2 250 1000 ± 2.0 ± 0.8 ± 0.3		재질 MATERIAL  작성 DATE 2018.06.29 척도 SCALE N/S		형식 TYPE DMT300HL		원도 번호 ORIGINAL DWG. NO.	
		승인 APPROVED BY JK.Kim 검토도 CHECKED BY TH.Cha 제도 DRAWN CH.Baek 설계 DESIGNED		품명 NAME MARINE TRANSMISSION		도면 번호 DWG. NO. 30000GA~E-014CFR	
		D-I INDUSTRIAL		크기 SIZE A 3	코드 번호 CODE ID. NO.		개정 (REV.) 000