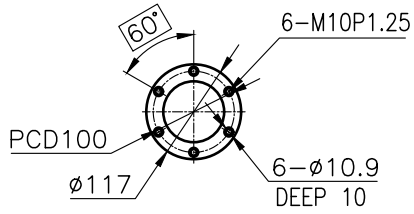
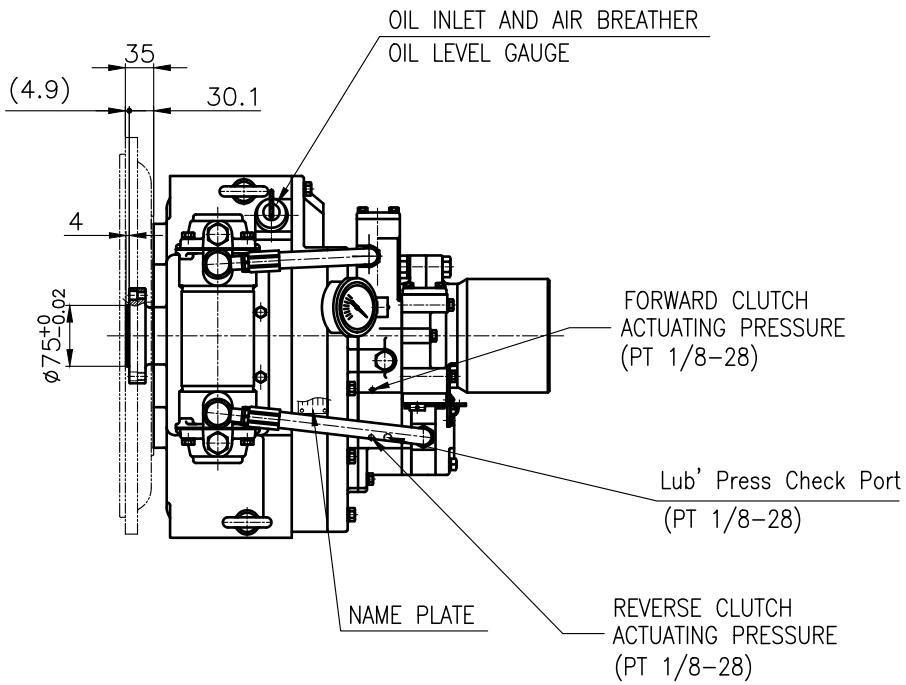


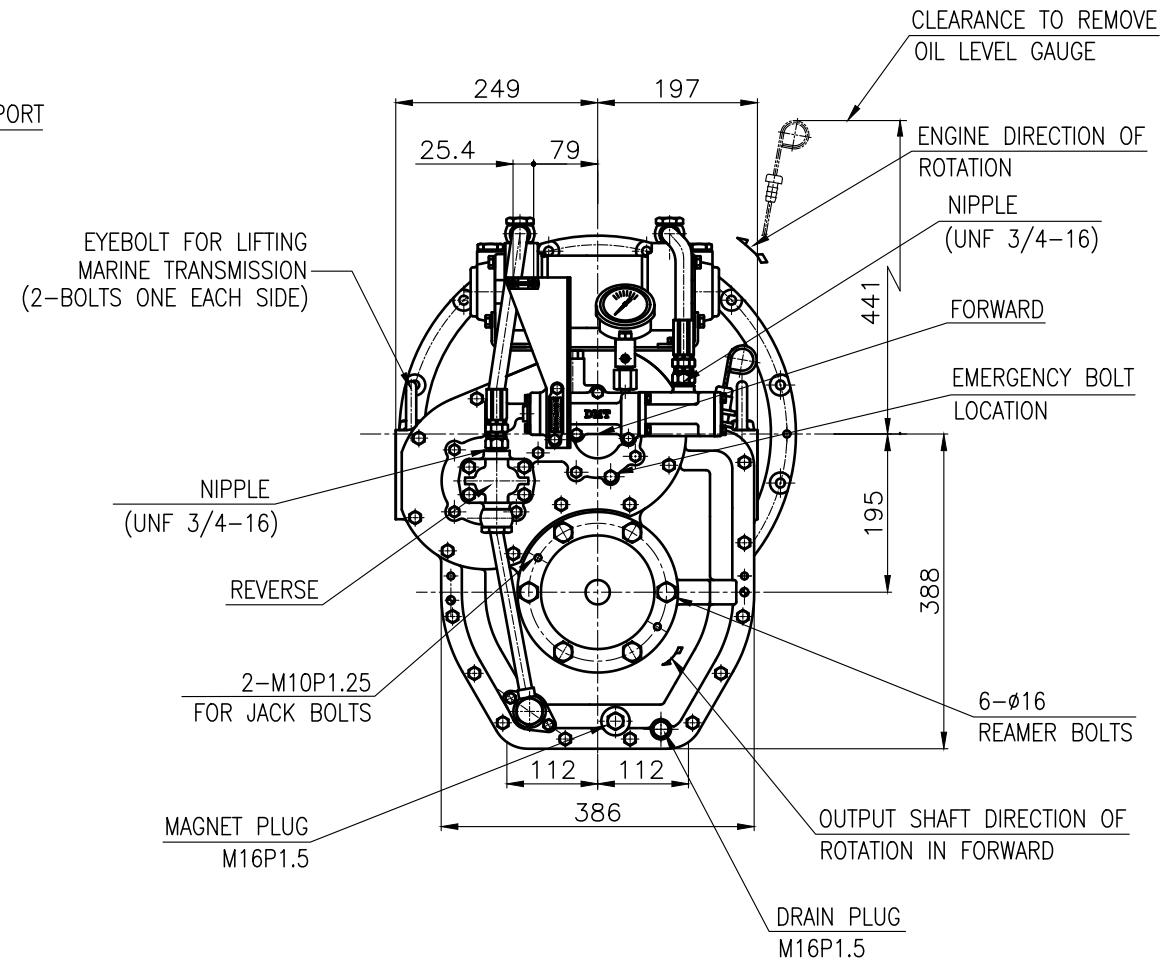
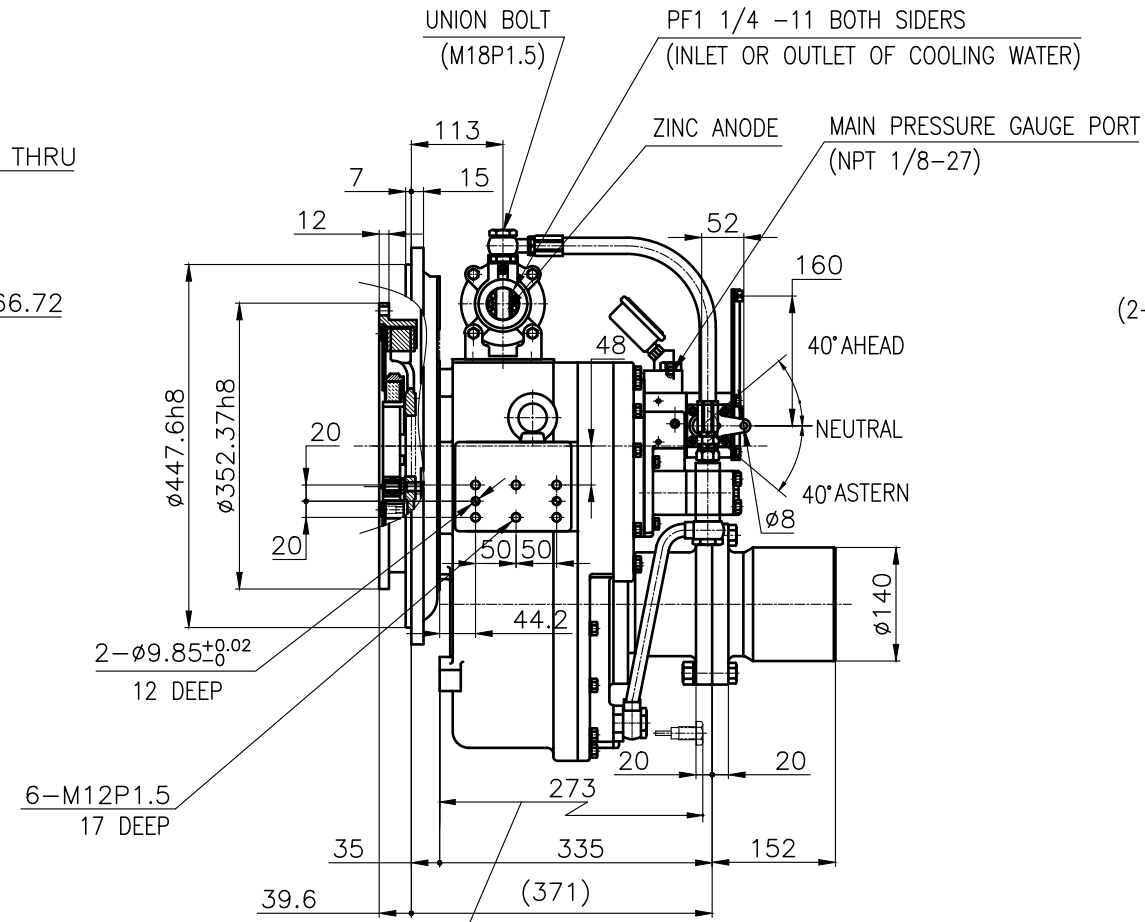
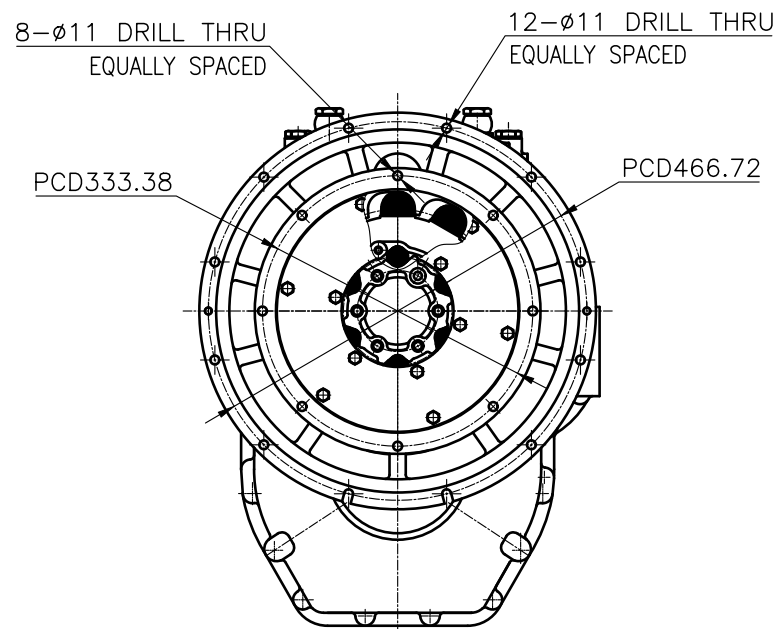
OUTPUT SHAFT COUPLING & PROPELLER COUPLING DIMENSION



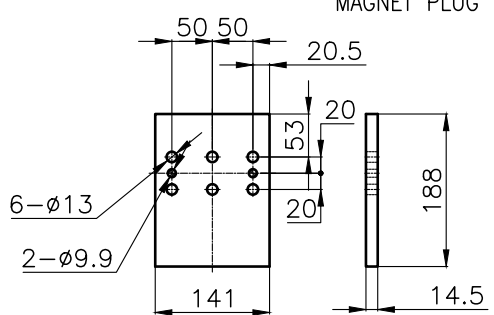
INPUT COUPLING DIMENSION



DMT 110A MARINE TRANSMISSION SPECIFICATION						
GEAR RATIO	1.77	2.09	2.42	2.82	3.19	3.81
TOTAL WEIGHT	APPROX. 212 kg(DRY)					
OIL CAPACITY	APPROX. 4 L					
OIL VISCOSITY	SAE # 30					
OIL PRESSURE	1.96 ~ 2.54 MPa			CLUTCH OIL		
DIRECTION OF ROTATION IN FORWARD	INPUT	C.C.W VIEWED FROM THE STERN				
	OUTPUT	C.W VIEWED FROM THE STERN				
OIL CHANGE INTERVAL	THE FIRST 100HOURS OF INITIAL OPERATION					
	AND EVERY 1000HOURS THEREAFTER					
SHIFTING LIMIT	UNDER 50% OF THE RATED ENGINE SPEED					
OIL COOLER	WATER FLOW 40 ~ 60L/min					MAX 32°C
	TEMPERATURE OF COOLING WATER					
OPERATING TORQUE OF SHIFTING LEVER				UNDER 2.94Nm		



REMARK (HOT)
1.HOUSING: SAE#2
2.DRIVING RING: SAE 11.5"
3.COUPLING TYPE : DUAL STAGE
4.APPLICATION ENGINE : STANDARD



BRACKET DIMENSION

공 동 공 차 TOLERANCE ON					번 호 NO.		부 분 PART NO.		부 명 PART NAME		개 수 Q'TY		재 질 MATERIAL		규 격 SIZE		비 고 REMARKS	
분 수 소 수 각 도 FRACTIONS DECIMALS ANGLES																	원 도 번 ORIGINAL DWG. NO.	
± — ± — ± —																		
일 반 공 차	집 사 가 공				재 질 MATERIAL		형 식 TYPE		DMT110A									
	구 분		조 공	중 공	정 공	작 성 DATE 2018.6.20		척 도 SCALE N/S										
	승 인 APPROVED BY		검 도 CHECKED BY		재 도 DRAWN		설 계 DESIGNED		부 명 NAME		MARINE TRANSMISSION							
	JK.Kim		TH.Cha		MA.Kim				도 번 DWG. NO.		11000GA~E-2115DCH		개정 (REV.) 000					
	D-I INDUSTRIAL								크 기 SIZE		A 3		코 - 드 번 호 CODE ID. NO.					
1 초 과 4 미 하		± 0.3	± 0.1	± 0.05														
4 16		± 0.5	± 0.2	± 0.07														
16 63		± 0.7	± 0.3	± 0.1														
63 250		± 1.2	± 0.5	± 0.2														
250 1000		± 2.0	± 0.8	± 0.3														