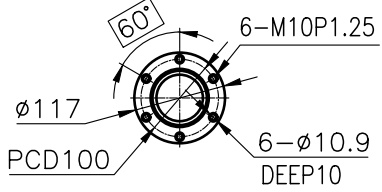
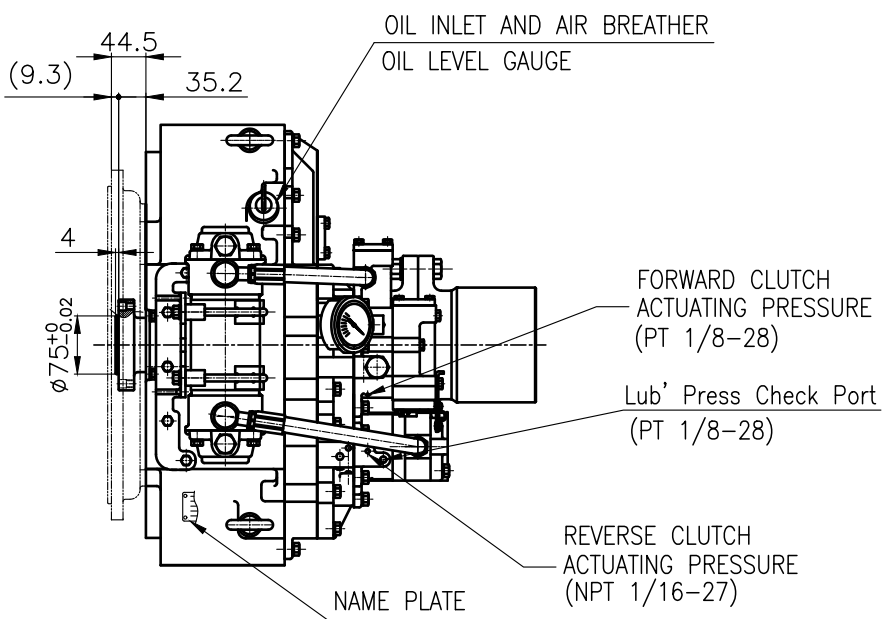


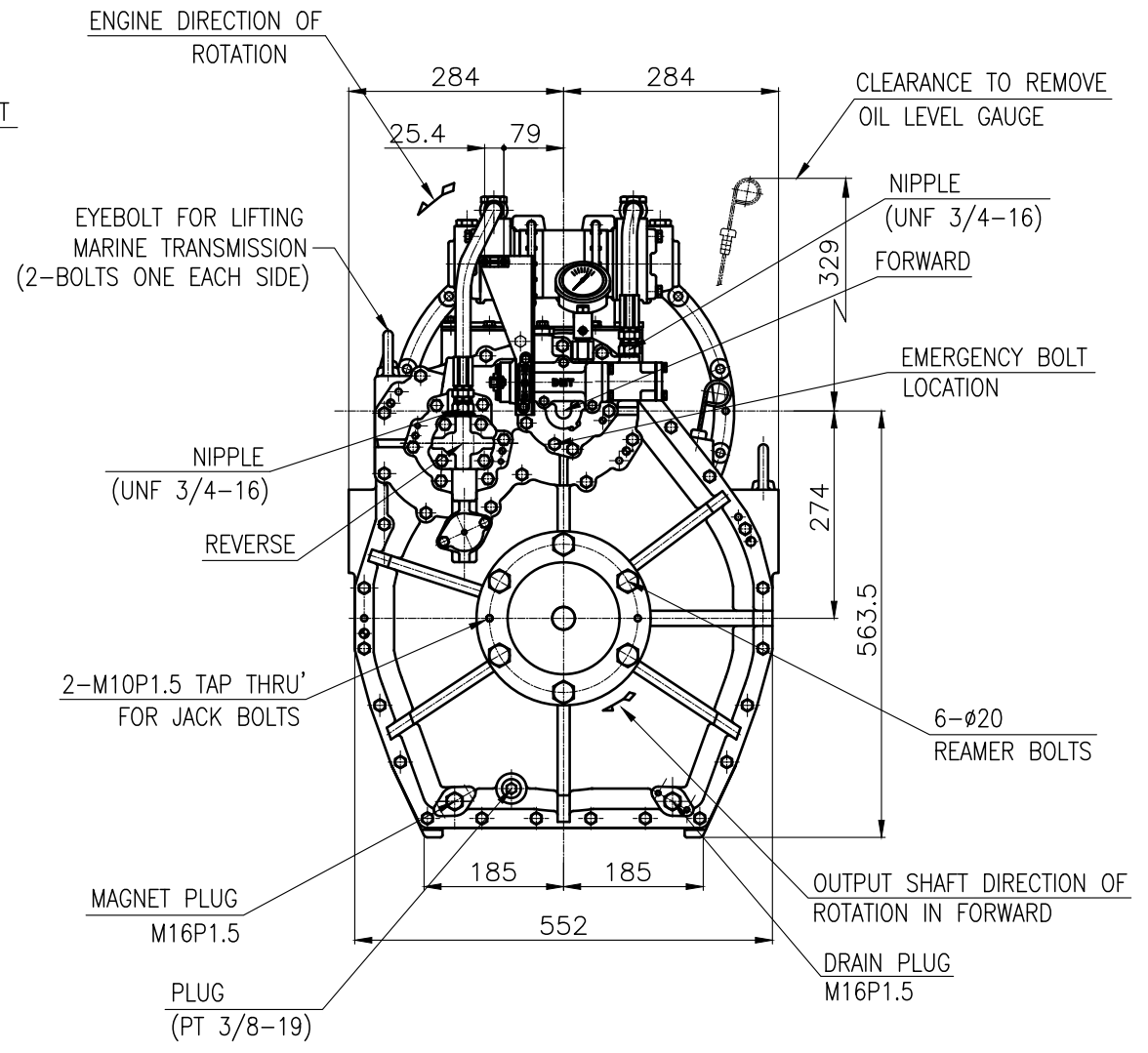
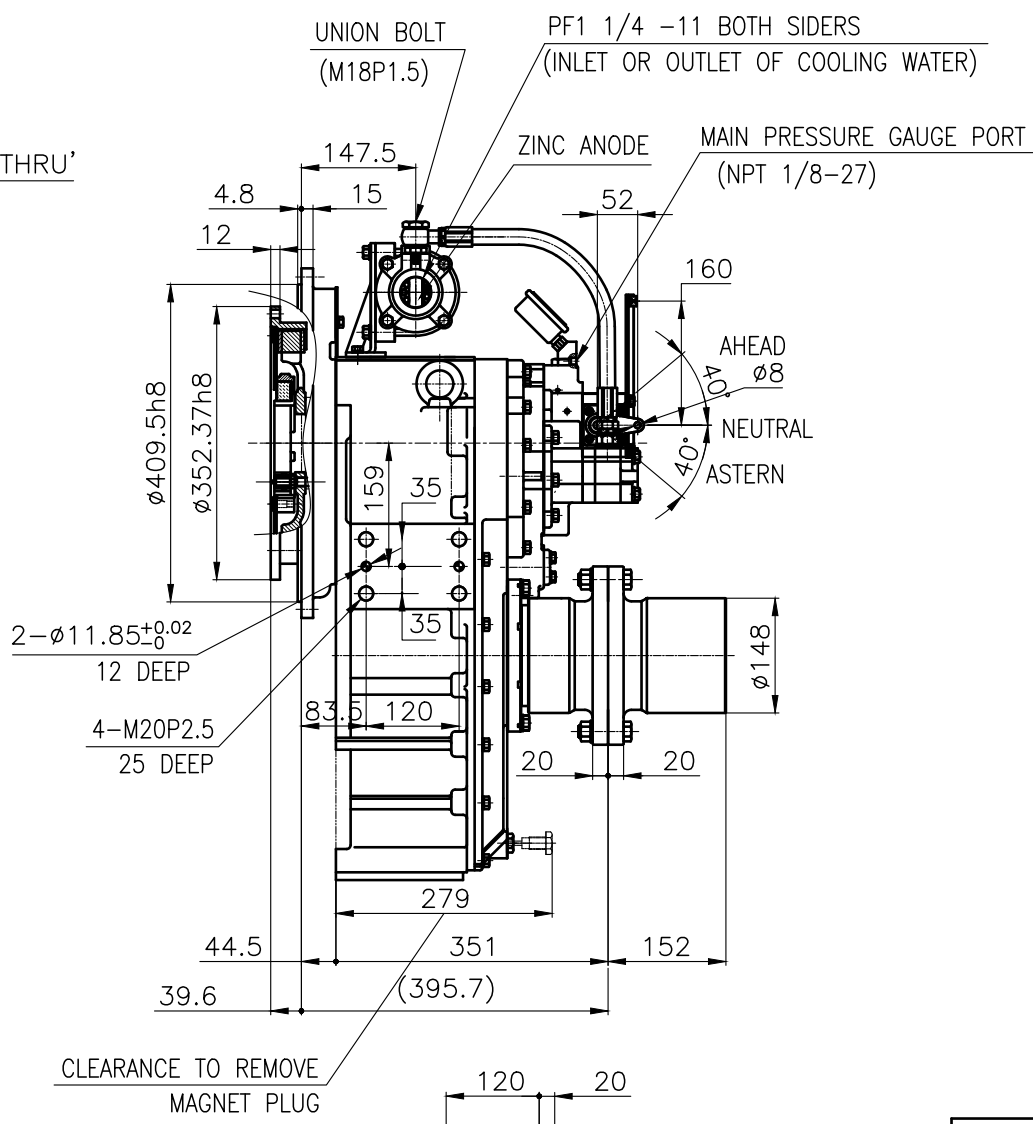
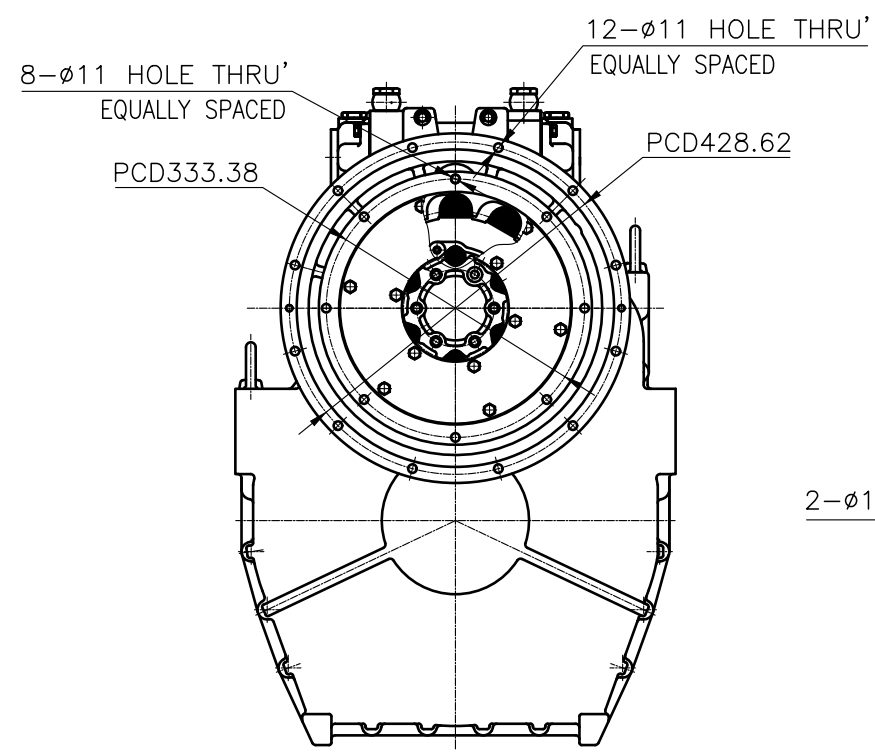
OUTPUT SHAFT COUPLING &
PROPELLER COUPLING DIMENSION



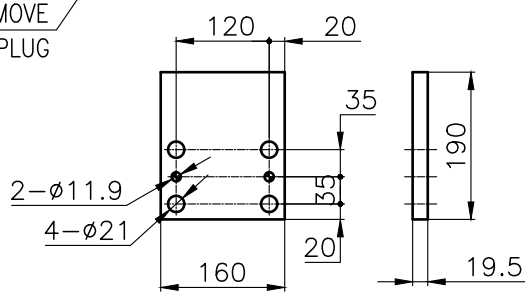
INPUT COUPLING
DIMENSION




DMT 135HL MARINE TRANSMISSION SPECIFICATION			
GEAR RATIO	4.07, 4.50, 4.95		
TOTAL WEIGHT	APPROX. 263 kg(DRY)		
OIL CAPACITY	APPROX. 9.5L		
OIL VISCOSITY	SAE # 30		
OIL PRESSURE	1.96 ~ 2.54 MPa	CLUTCH OIL	
DIRECTION OF ROTATION IN FORWARD	INPUT	C.C.W VIEWED FROM THE STERN	
	OUTPUT	C.W VIEWED FROM THE STERN	
OIL CHANGE INTERVAL	THE FIRST 100HOURS OF INITIAL OPERATION		
	AND EVERY 1000HOURS THEREAFTER		
SHIFTING LIMIT	UNDER 50% OF THE RATED ENGINE SPEED		
OIL COOLER	WATER FLOW 40 ~ 60L/min		
	TEMPERATURE OF COOLING WATER		MAX 32°C
OPERATING TORQUE OF SHIFTING LEVER		UNDER 2.94Nm	



- REMARK (HOT)
- 1.HOUSING: SAE#3
 - 2.DRIVING RING: SAE 11.5"
 - 3.COUPLING TYPE : DUAL STAGE
 - 4.APPLICATION ENGINE : STANDARD



BRACKET DIMENSION

공 통 공 차 TOLERANCE ON					번호 NO.	부 품 PART NO.	명 부 PART NAME	개 수 Q'TY	재 질 MATERIAL	규 격 SIZE	비 고 REMARKS
분 수 FRACTIONS		소 수 DECIMALS		각 도 ANGLES	<div>재 질 MATERIAL</div> <div>작 성 DATE 2018.06.20척 도 SCALE N/S</div>			형 식 TYPE	DMT135HL	원 도 번 ORIGINAL DWG. NO.	
± —	± —	± —									
일 반 장 차	절 사 가 공				승 인 APPROVED BY	검 도 CHECKED BY	재 도 DRAWN	설 계 DESIGNED	품 명 NAME	MARINE TRANSMISSION	
	구 분	조 급	중 급	정 급	JK.Kim	TH.Cha	MA.Kim				
	1 초과 4 이하	± 0.3	± 0.1	± 0.05							
	4 16	± 0.5	± 0.2	± 0.07							
	16 63	± 0.7	± 0.3	± 0.1							
63 250	± 1.2	± 0.5	± 0.2	㉔D-I INDUSTRIAL			크 기 SIZE	A 3	코 드 번 호 CODE ID. NO.	개 정 (REV.) 000	
250 1000	± 2.0	± 0.8	± 0.3								