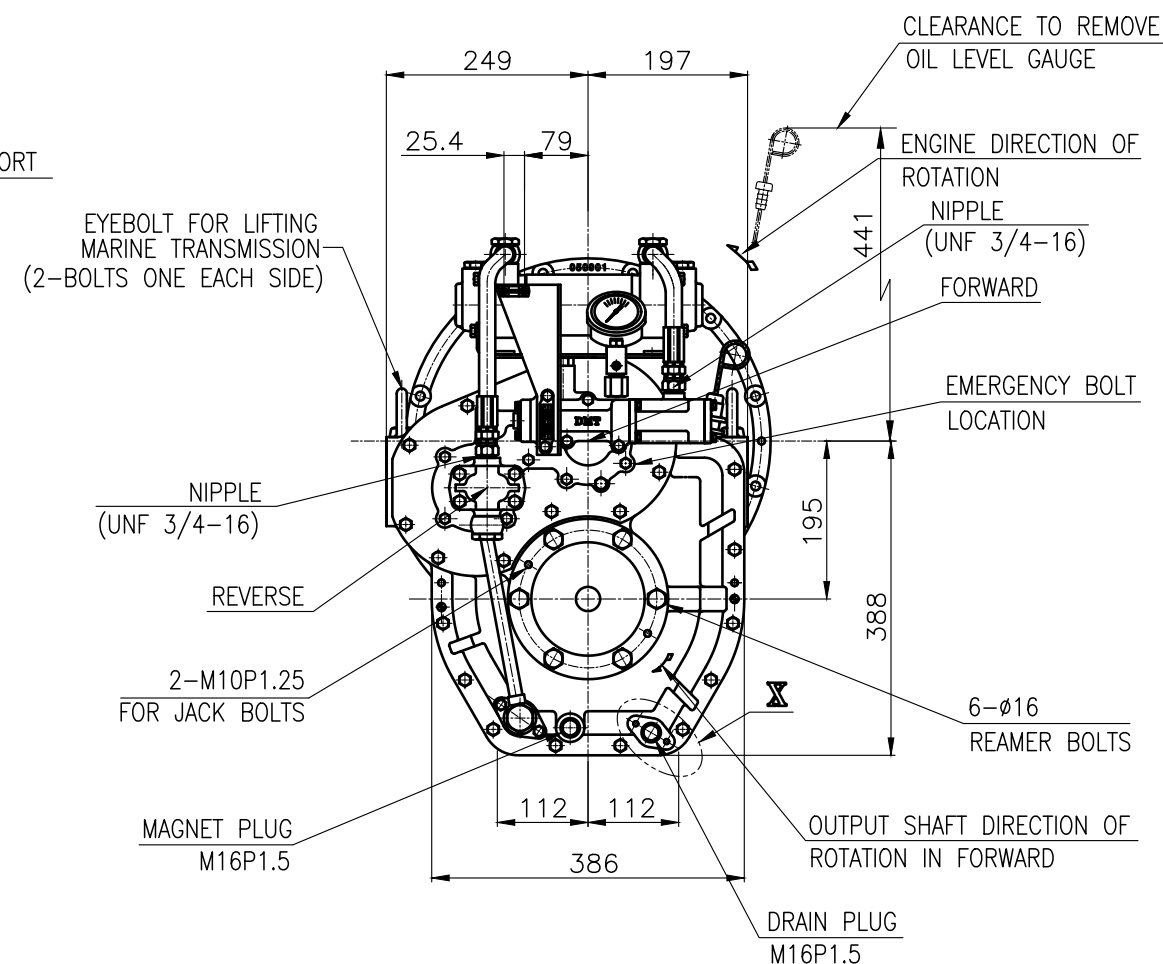
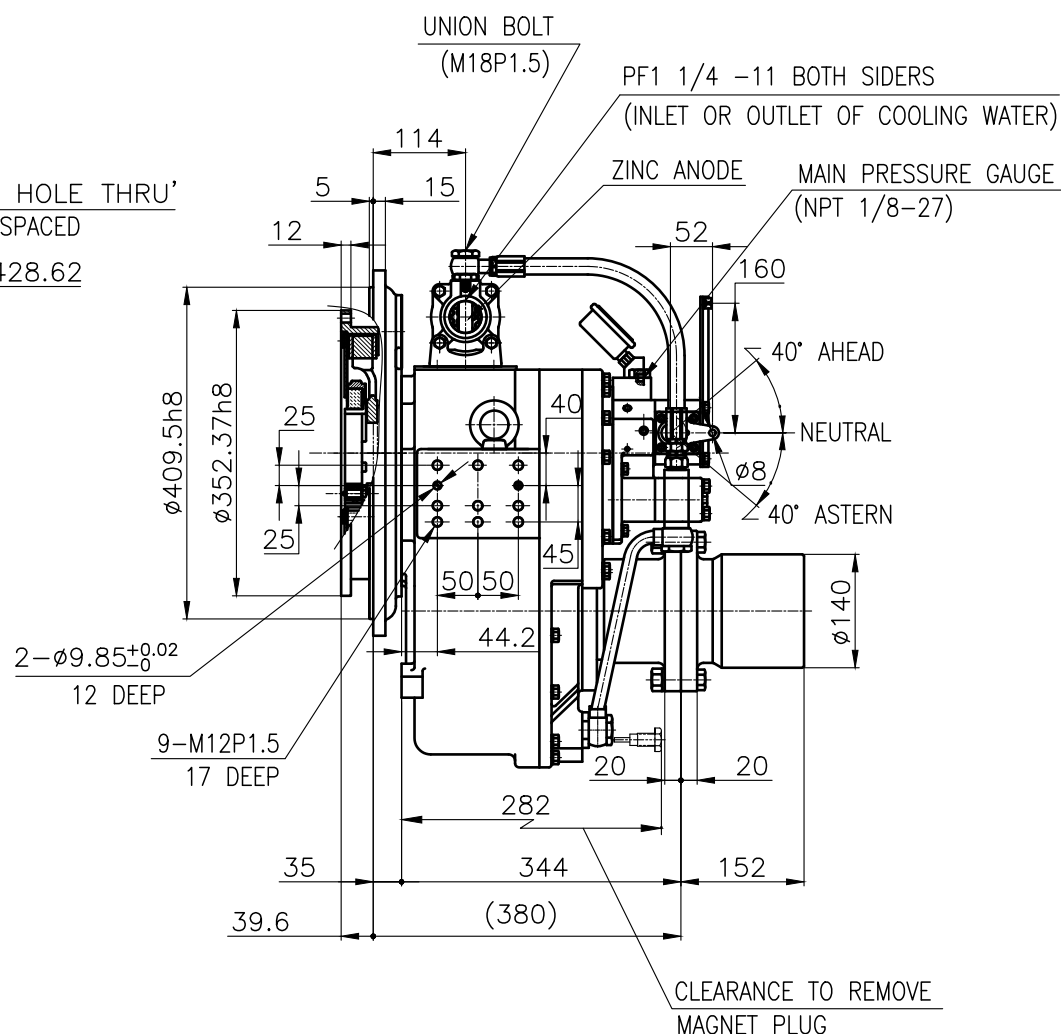
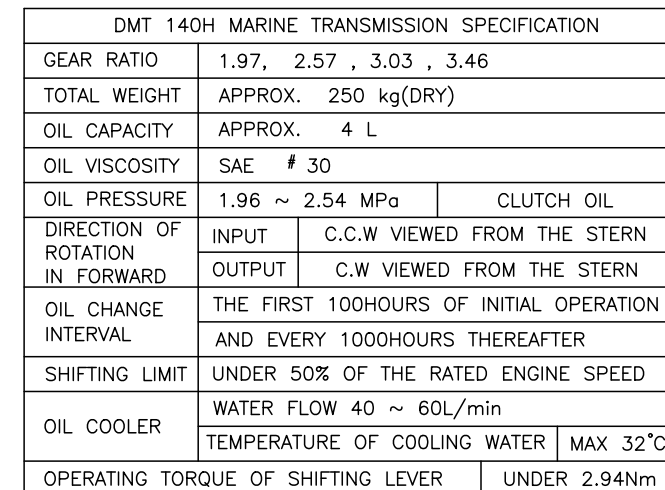


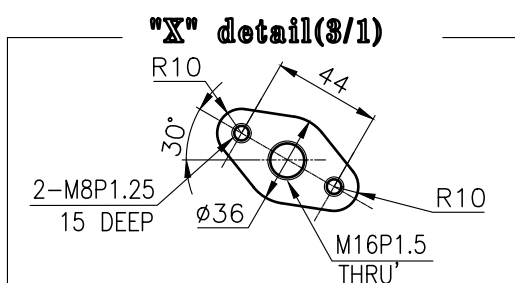
INPUT COUPLING DIMENSION



Technical drawing of a square plate with the following dimensions and specifications:

- Overall width: 141
- Overall height: 160
- Top edge features:
 - Two horizontal segments of 50 each, followed by a 20.5 segment.
 - Two vertical segments of 25 each, followed by a 90 segment.
- Bottom edge features:
 - A 14.5 segment from the right edge.
- Hole specifications:
 - 6- $\varnothing 13$ (6 holes of diameter 13, arranged in a 2x3 grid).
 - 2- $\varnothing 9.9$ (2 holes of diameter 9.9, located near the bottom corners).

BRACKET DIMENSION



SHEET 1 OF 1
 종이기술-004(841×594)