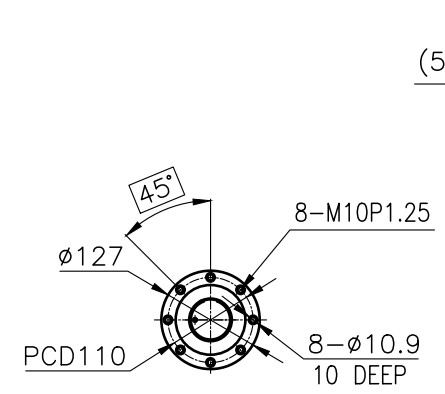
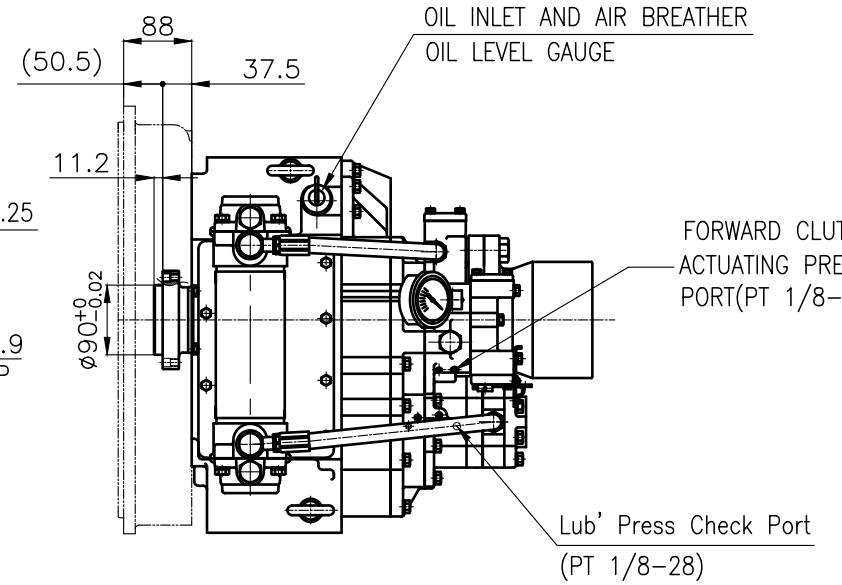


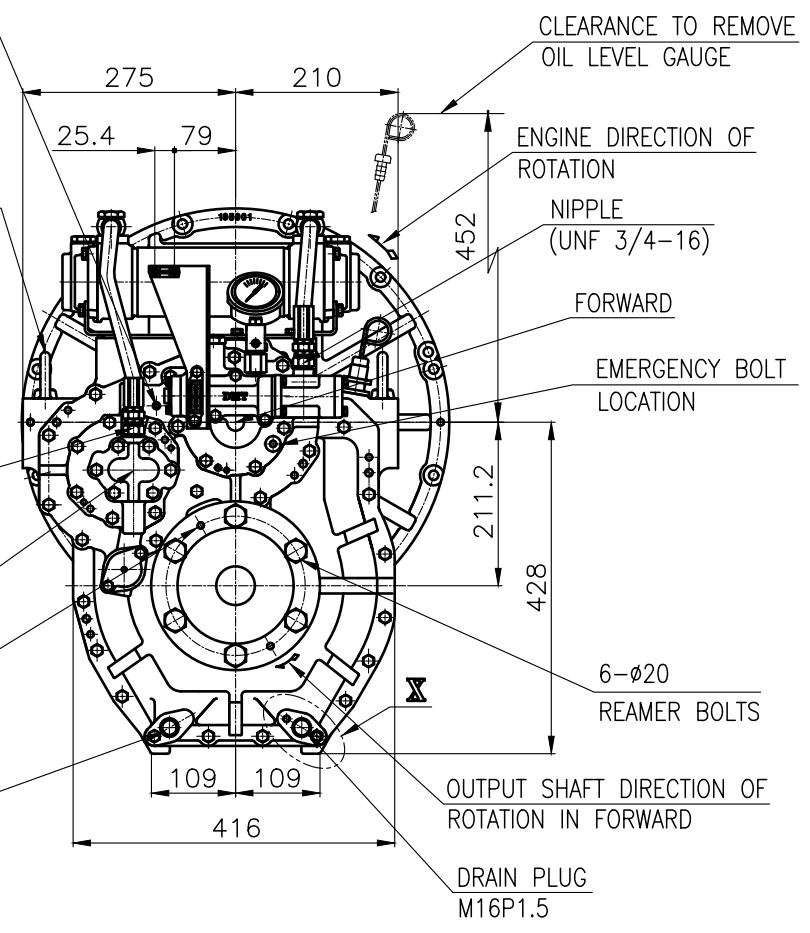
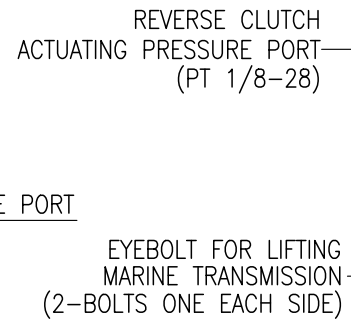
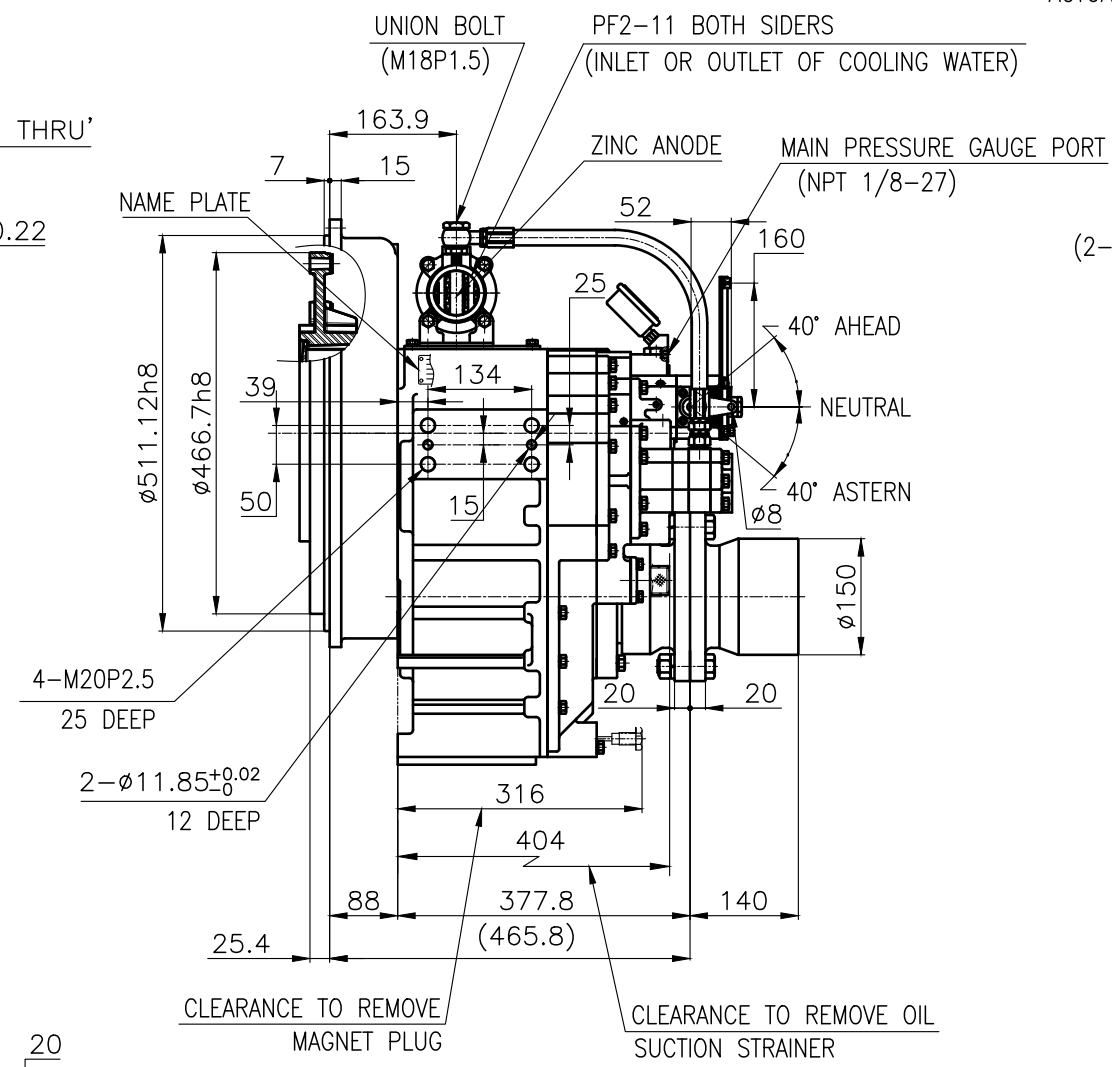
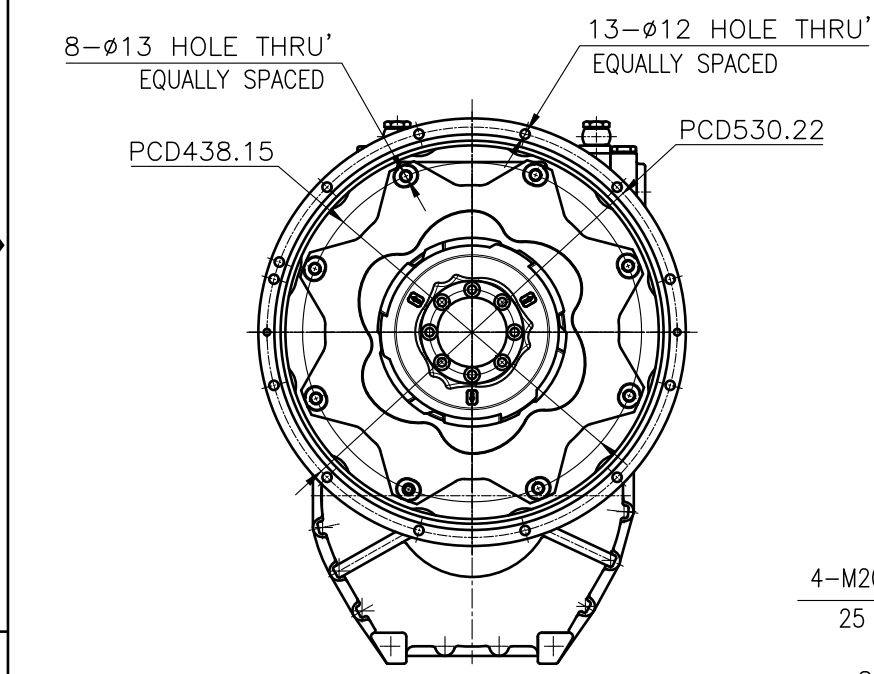
OUTPUT SHAFT COUPLING & PROPELLER COUPLING DIMENSION



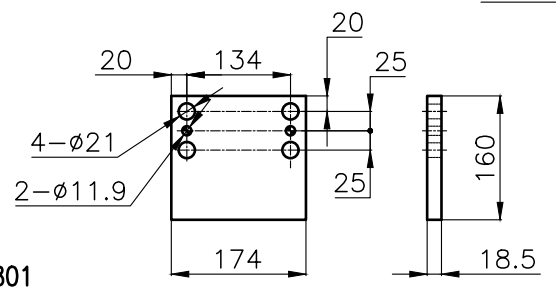
INPUT COUPLING DIMENSION



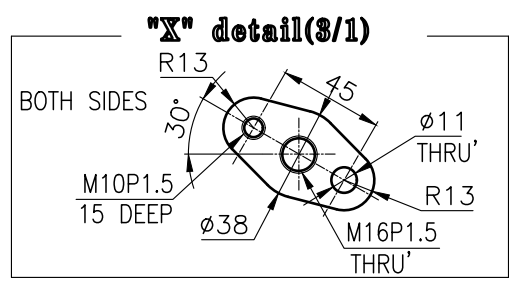
DMT 150H MARINE TRANSMISSION SPECIFICATION			
GEAR RATIO	1.83, 2.09 , 2.51 , 3.08 , 3.43		
TOTAL WEIGHT	APPROX. 287 kg(DRY)		
OIL CAPACITY	APPROX. 5.5 L		
OIL VISCOSITY	SAE # 30		
OIL PRESSURE	1.96 ~ 2.54 MPa	CLUTCH OIL	
DIRECTION OF ROTATION IN FORWARD	INPUT	C.C.W VIEWED FROM THE STERN	
	OUTPUT	C.W VIEWED FROM THE STERN	
OIL CHANGE INTERVAL	THE FIRST 100HOURS OF INITIAL OPERATION		
	AND EVERY 1000HOURS THEREAFTER		
SHIFTING LIMIT	UNDER 50% OF THE RATED ENGINE SPEED		
OIL COOLER	WATER FLOW 40 ~ 60L/min		
	TEMPERATURE OF COOLING WATER		MAX 32°C
OPERATING TORQUE OF SHIFTING LEVER			UNDER 2.94Nm



REMARK (HOT)  
1.HOUSING: SAE#1  
2.DRIVING RING: SAE 14"  
3.COUPLING TYPE  
-CENTA Flex Coupling : 77216801  
4.APPLICATION ENGINE : STANDARD



BRACKET DIMENSION



公差 TOLERANCE ON				번호 NO.	품 PART NO.	품 PART NAME	개 수 Q'TY	재 MATERIAL	규 SIZE	비 REMARKS
분 FRACTIONS	수 DECIMALS	각도 ANGLES		제 MATERIAL	작성 DATE 2018.06.29	척도 SCALE N/S	형 TYPE	DMT150H	원도 ORIGINAL DWG. NO.	
±	±	±		승 인 APPROVED BY JK.Kim	검 도 CHECKED BY TH.Cha	제 도 DRAWN CH.Baek	품 NAME	MARINE TRANSMISSION	도 DWG. NO.	15000GA~E-114CFRH
일 구 본	조 급	중 급	정 급	D-I INDUSTRIAL				크 기 SIZE	A 3	코-드 번 호 CODE ID. NO.
1 초과 4 이하	± 0.3	± 0.1	± 0.05							
4 16	± 0.5	± 0.2	± 0.07							
16 63	± 0.7	± 0.3	± 0.1							
63 250	± 1.2	± 0.5	± 0.2							
250 1000	± 2.0	± 0.8	± 0.3							