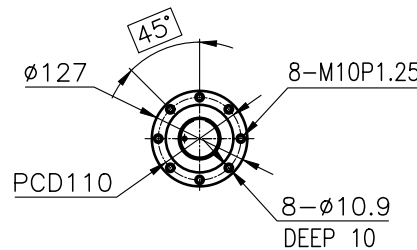
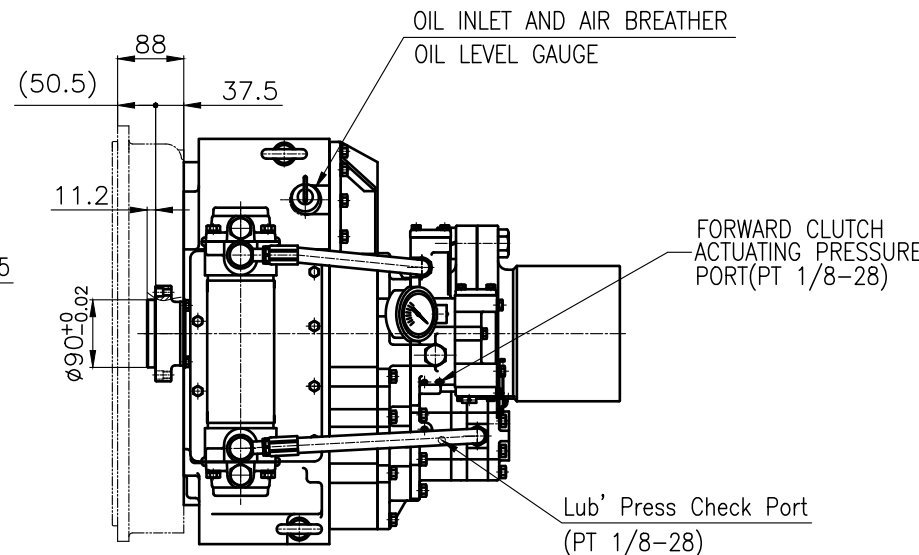


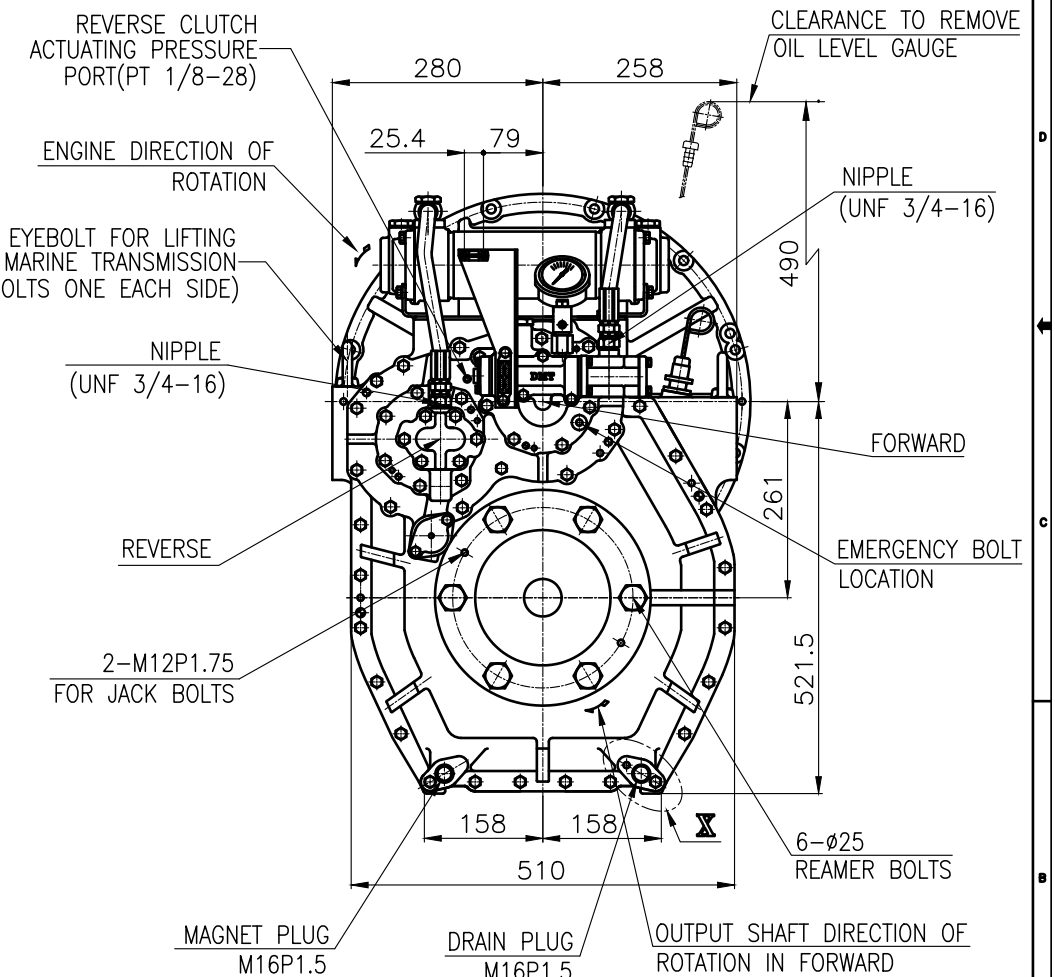
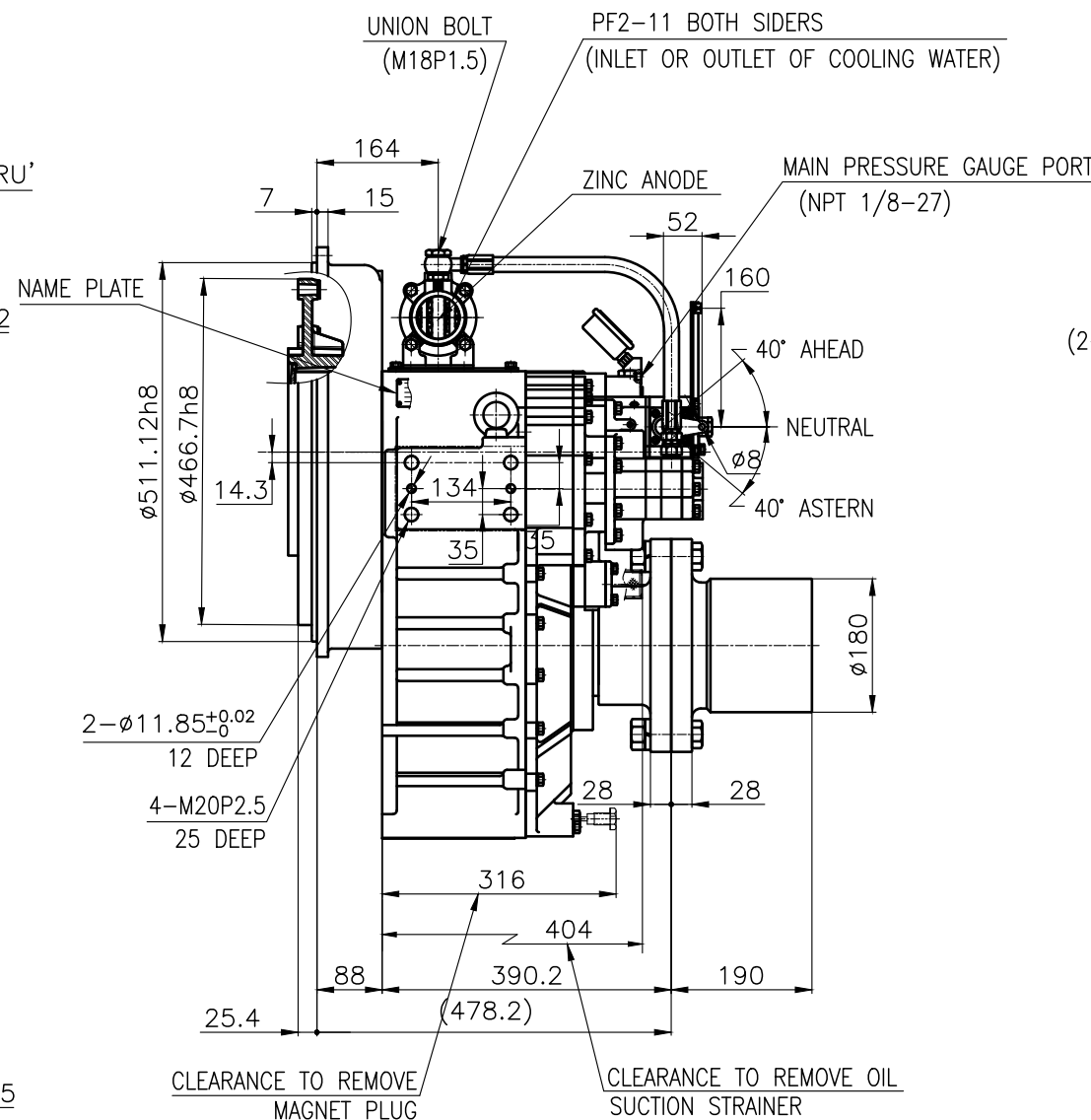
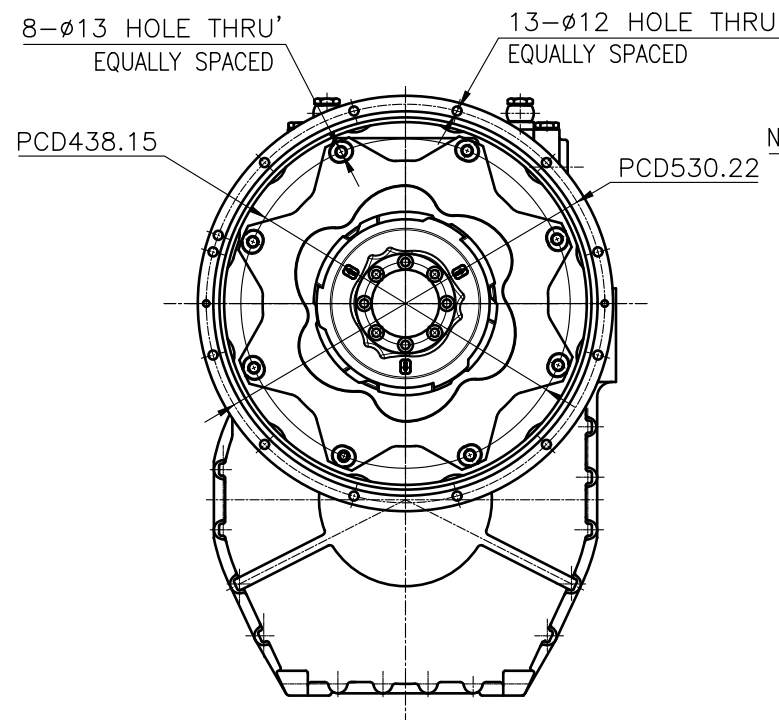
OUTPUT SHAFT COUPLING &
PROPELLER COUPLING DIMENSION



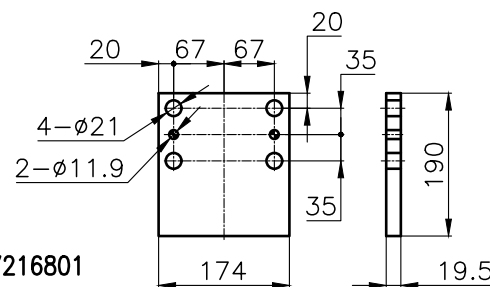
INPUT COUPLING
DIMENSION



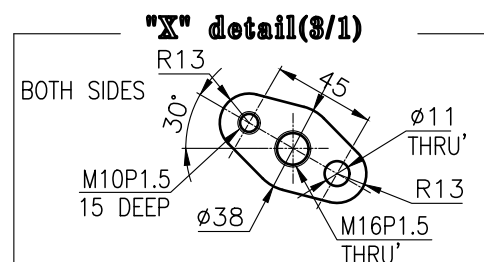
DMT 170HL MARINE TRANSMISSION SPECIFICATION			
GEAR RATIO	4.04, 4.48		
TOTAL WEIGHT	APPROX. 352.5 kg(DRY)		
OIL CAPACITY	APPROX. 10 L		
OIL VISCOSITY	SAE # 30		
OIL PRESSURE	1.96 ~ 2.54 MPa		CLUTCH OIL
DIRECTION OF ROTATION IN FORWARD	INPUT	C.C.W VIEWED FROM THE STERN	
	OUTPUT	C.W VIEWED FROM THE STERN	
OIL CHANGE INTERVAL	THE FIRST 100HOURS OF INITIAL OPERATION		
	AND EVERY 1000HOURS THEREAFTER		
SHIFTING LIMIT	UNDER 50% OF THE RATED ENGINE SPEED		
OIL COOLER	WATER FLOW 40 ~ 60L/min		
	TEMPERATURE OF COOLING WATER		MAX 32℃
OPERATING TORQUE OF SHIFTING LEVER			UNDER 2.94Nm



- REMARK (HOT)
- HOUSING: SAE#1
 - DRIVING RING: SAE 14"
 - COUPLING TYPE
-CENTA Flex Coupling : 77216801
 - APPLICATION ENGINE : STANDARD



BRACKET DIMENSION



TOLERANCE ON				NO.	PART NO.	PART NAME	Q'TY	MATERIAL	SIZE	REMARKS
FRACTIONS	DECIMALS	ANGLES								
±	±	±								
절삭가공				DATE	2018.06.29	SCALE	N/S	DMT170HL		
1 초과 4 이하				APPROVED BY	JK.Kim	CHECKED BY	TH.Cha	DESIGNED BY	CH.Baek	ORIGINAL DWG. NO.
4 16				MARINE TRANSMISSION			DWG. NO. 17000GHB~C-114CFRH			
16 63				D-I INDUSTRIAL			REV. 000			
63 250				SIZE A 3			CODE ID. NO.			
250 1000										