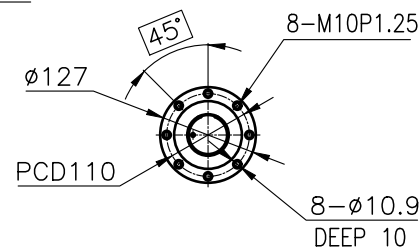
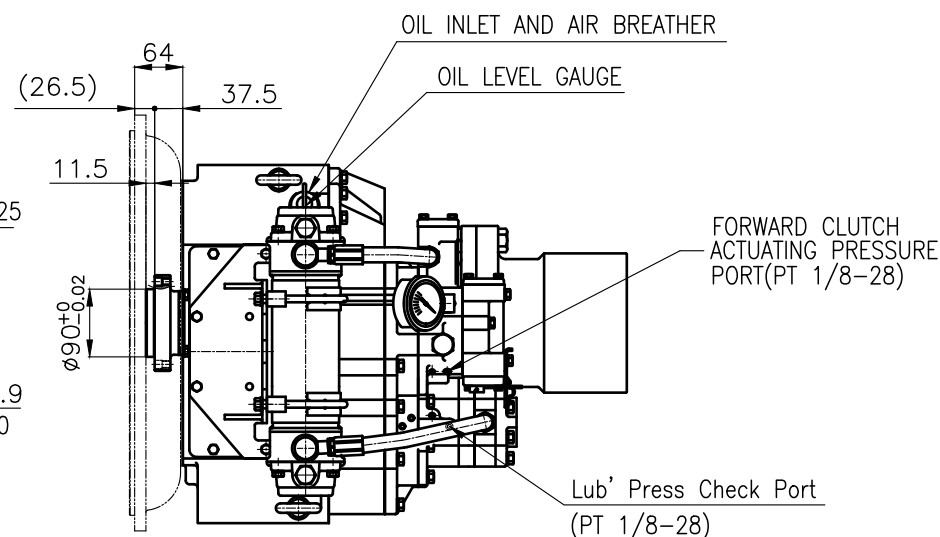


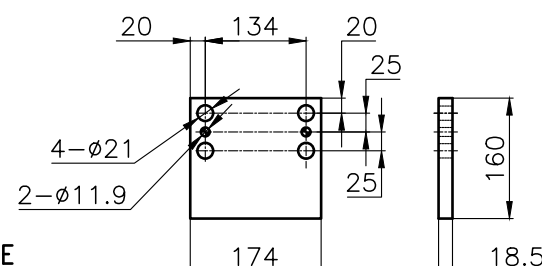
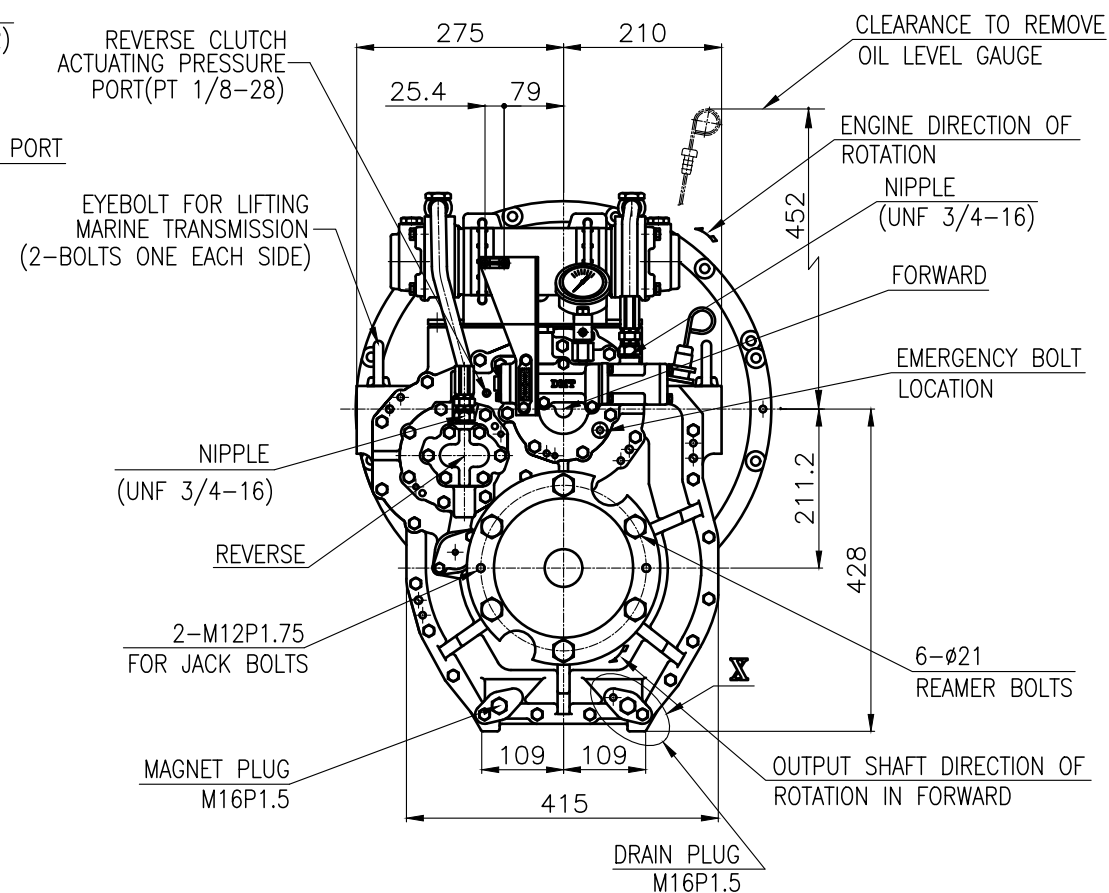
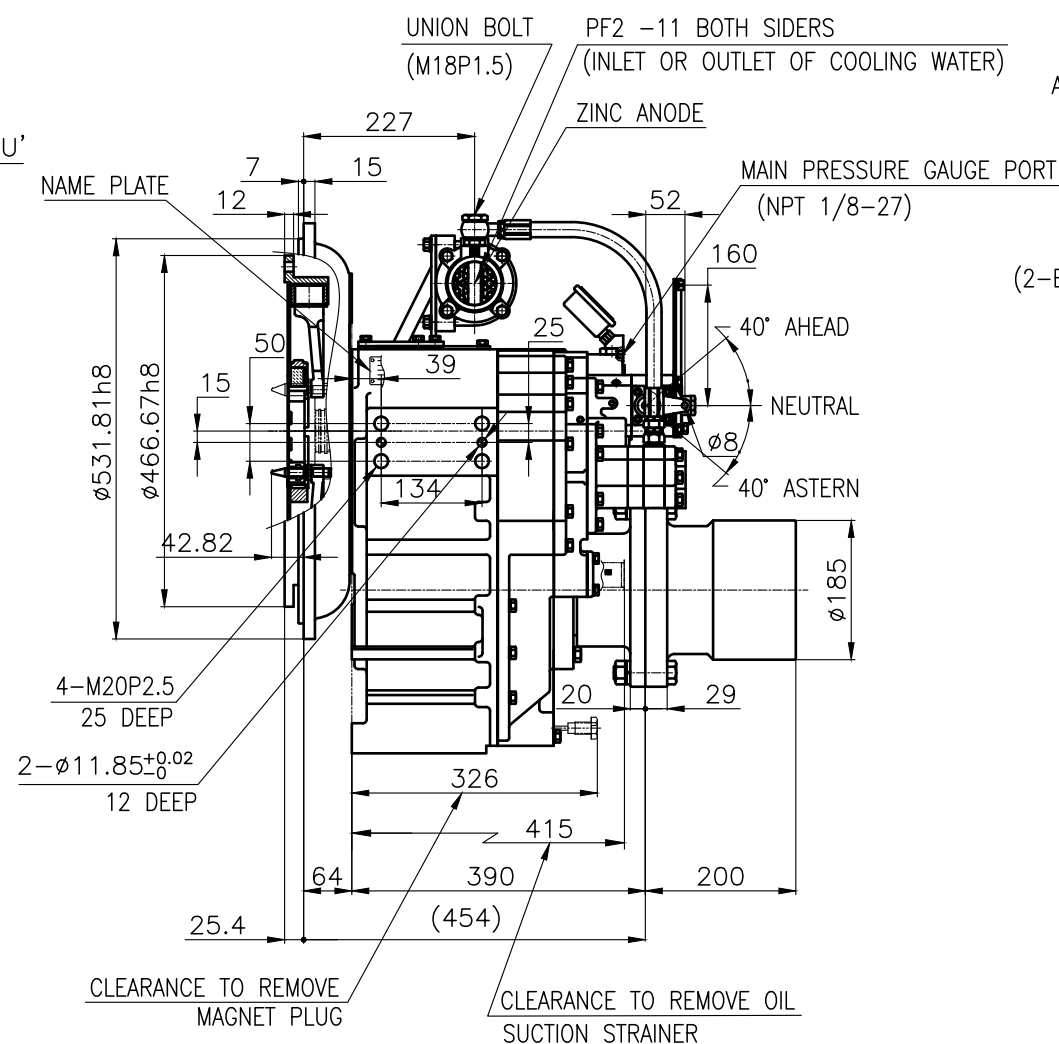
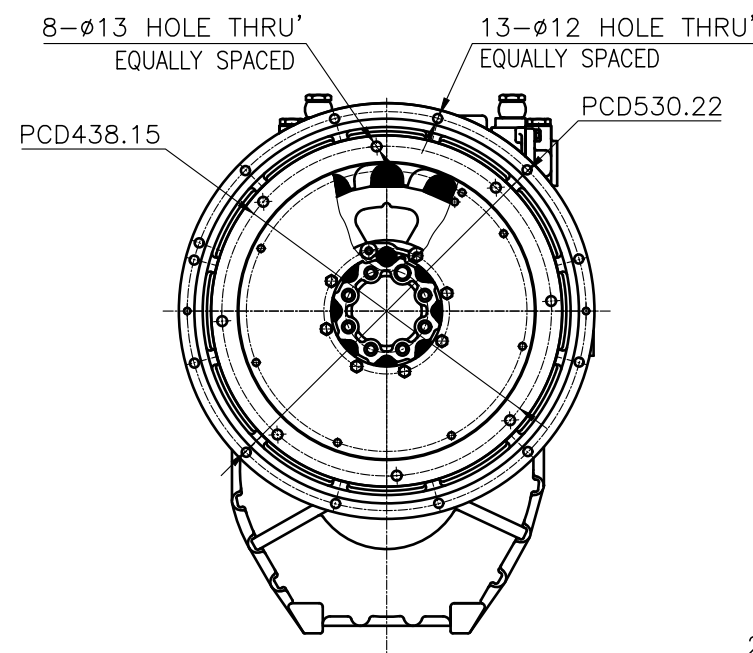
OUTPUT SHAFT COUPLING & PROPELLER COUPLING DIMENSION



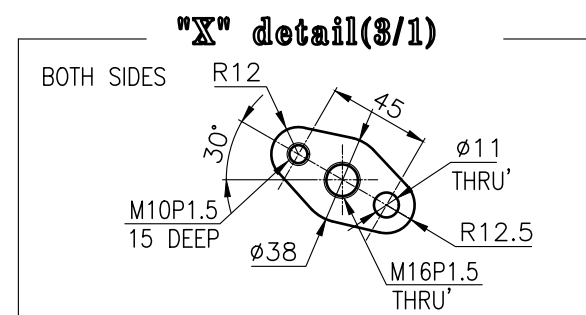
INPUT COUPLING DIMENSION



DMT 190H MARINE TRANSMISSION SPECIFICATION		
GEAR RATIO	1.83, 2.09, 2.52, 3.08, 3.43	
TOTAL WEIGHT	APPROX. 300 kg(DRY)	
OIL CAPACITY	APPROX. 5.5 L	
OIL VISCOSITY	SAE # 30	
OIL PRESSURE	1.96 ~ 2.54 MPa	CLUTCH OIL
DIRECTION OF ROTATION IN FORWARD	INPUT	C.C.W VIEWED FROM THE STERN
	OUTPUT	C.W VIEWED FROM THE STERN
OIL CHANGE INTERVAL	THE FIRST 100HOURS OF INITIAL OPERATION AND EVERY 1000HOURS THEREAFTER	
SHIFTING LIMIT	UNDER 50% OF THE RATED ENGINE SPEED	
OIL COOLER	WATER FLOW 40 ~ 60L/min	
	TEMPERATURE OF COOLING WATER	MAX 32°
OPERATING TORQUE OF SHIFTING LEVER		UNDER 2.94Nm



BRACKET DIMENSION



REMARK

1.HOUSING: SAE#1	
2.DRIVING RING: SAE 14"	<u>2-</u>
3.COUPLING TYPE : DUAL STAGE	
4.APPLICATION ENGINE : STANDARD	

공통공차 TOLERANCE ON					번호 NO.		품 PART NO.		품 PART NAME		개 수 Q'TY		재 질 MATERIAL		규 SIZE		비 고 REMARKS	
분 소 각 FRACTIONS DECIMALS ANGLES ± ± ±					재 질 MATERIAL		작성 DATE 2018.06.29		척 도 SCALE 1/1		형 식 TYPE		DMT190H		원 도 번 ORIGINAL DWG. NO.			
집 사 가 공					승 인 APPROVED BY		검 도 CHECKED BY		재 도 DRAWN		품 명 NAME		MARINE TRANSMISSION					
구 별 조급 종급 정급					JK.Kim		TH.Cha		BJ.Moon		도 번 DWG. NO.		190000A~E-114DC					
1 초과 4 이하 ± 0.3 ± 0.1 ± 0.05													개정 (REV) 000					
4 16 ± 0.5 ± 0.2 ± 0.07																		
16 63 ± 0.7 ± 0.3 ± 0.1																		
63 250 ± 1.2 ± 0.5 ± 0.2																		
250 1000 ± 2.0 ± 0.8 ± 0.3																		
D-I INDUSTRIAL										크 기 SIZE		A 3		코-드 번 호 CODE ID. NO.				