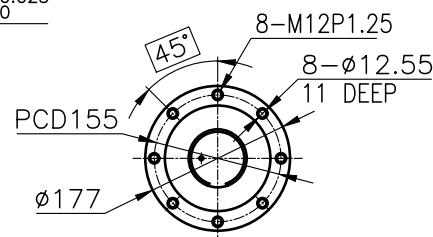
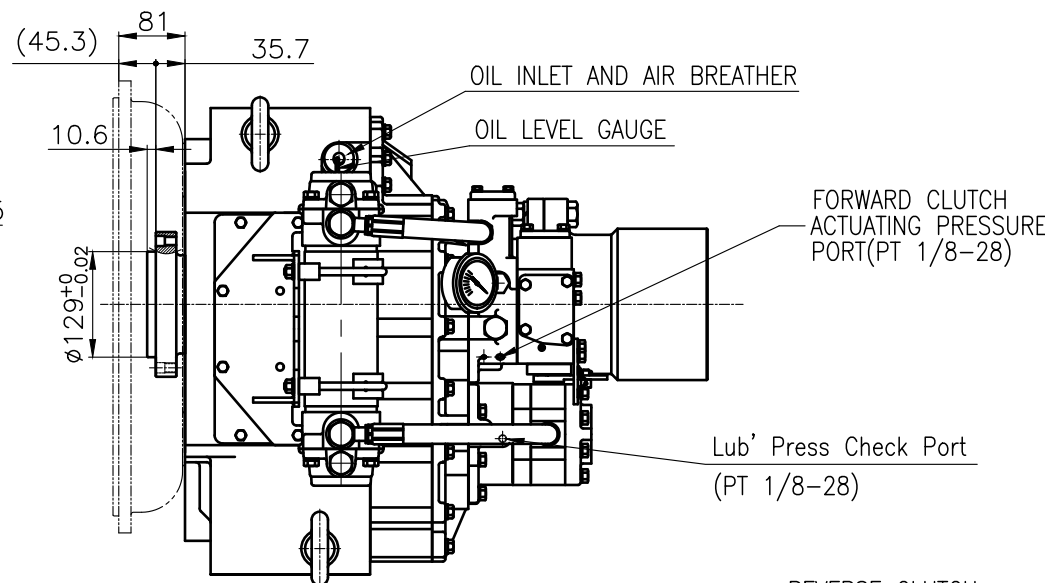


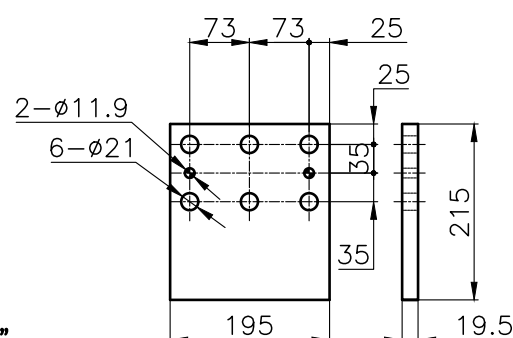
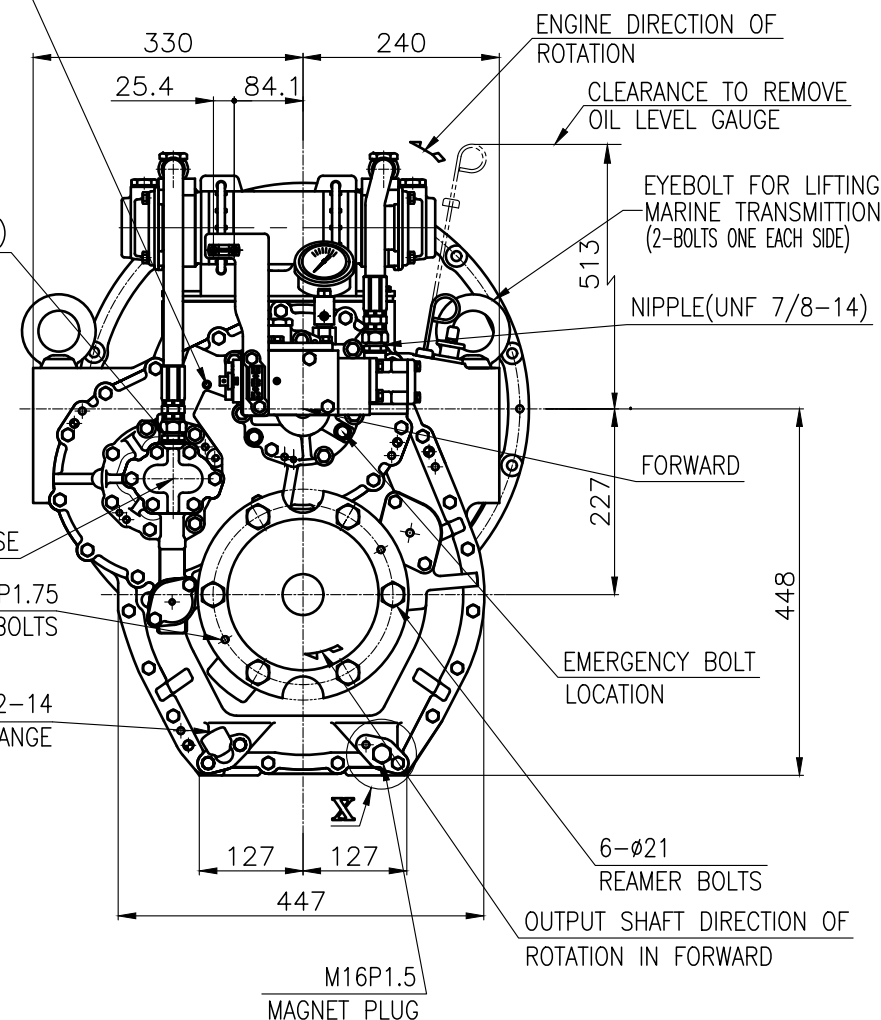
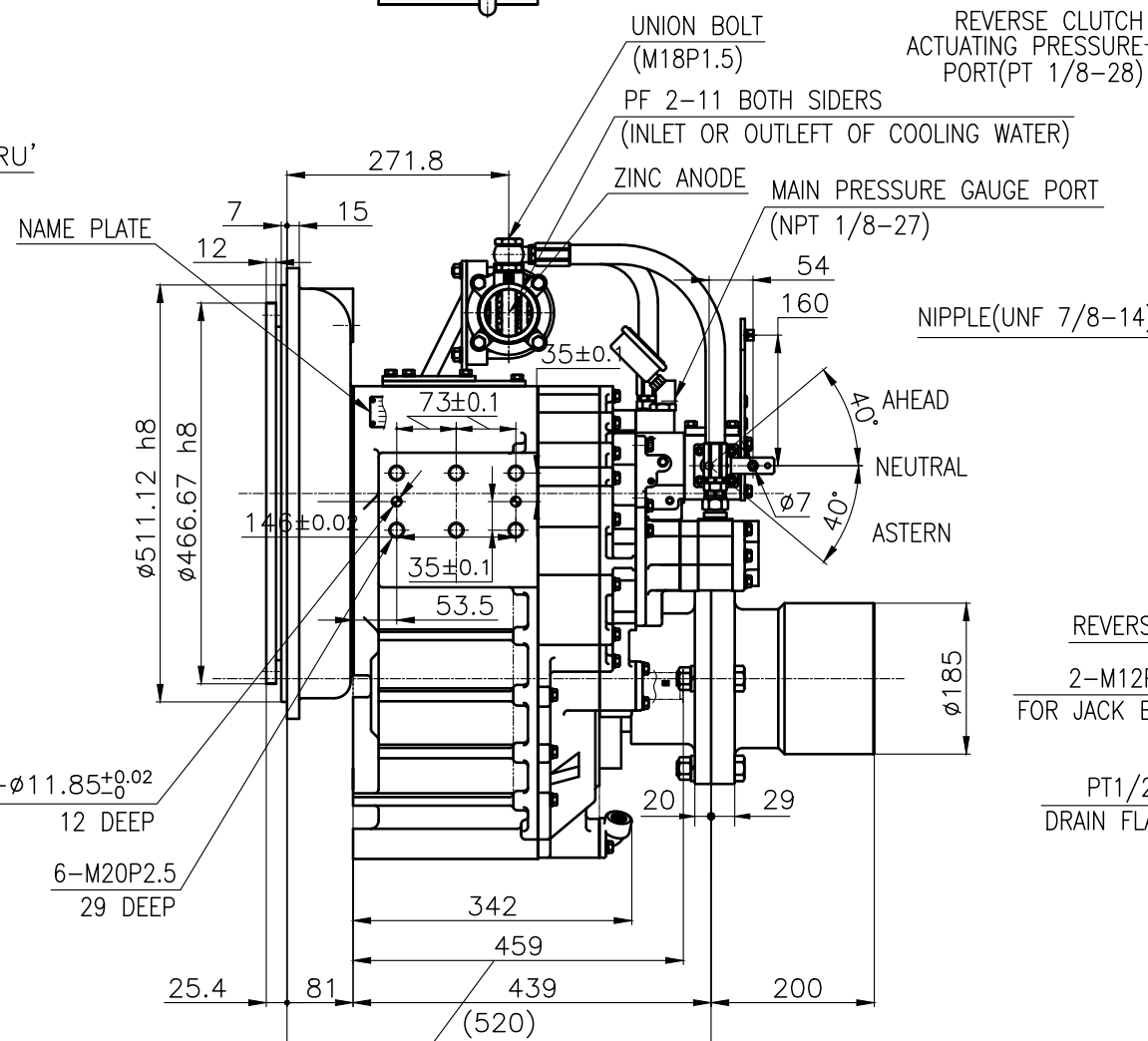
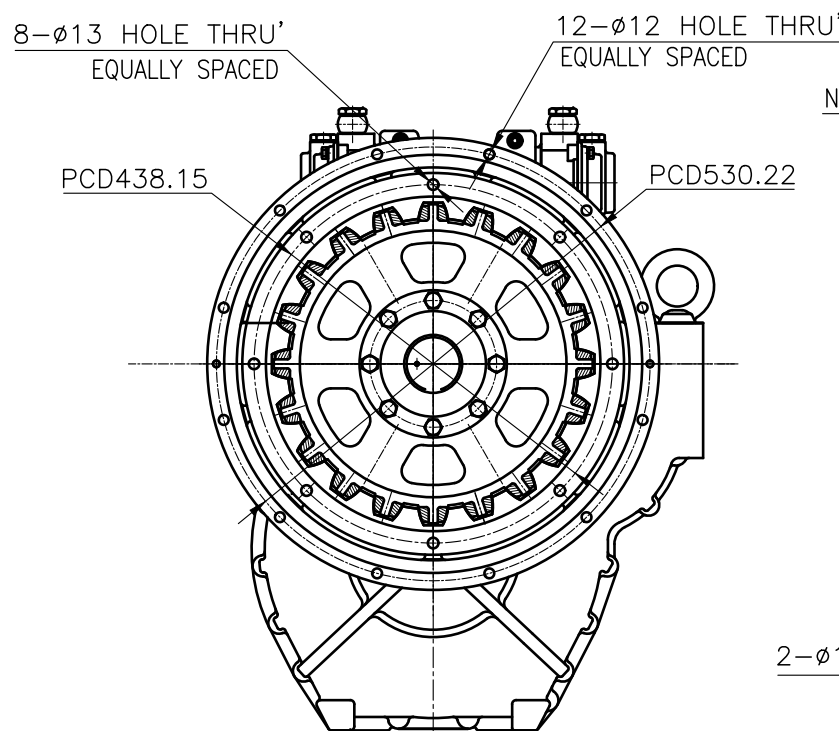
OUTPUT SHAFT COUPLING & PROPELLER COUPLING DIMENSION



INPUT COUPLING DIMENSION

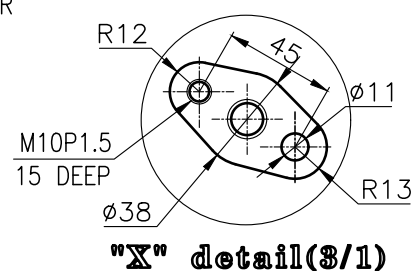


DMT240H MARINE TRANSMISSION SPECIFICATION			
GEAR RATIO	1.50 , 1.97 , 2.44 , 2.93 , 3.40		
TOTAL WEIGHT	APPROX. 400 Kg(DRY)		
OIL CAPACITY	APPROX. 8L		
OIL VISCOSITY	SAE # 30		
OIL PRESSURE	1.96 ~ 2.54 MPa	CLUTCH OIL	
DIRECTION OF ROTATION IN FORWARD	INPUT	C.C.W VIEWED FROM THE STERN	
	OUTPUT	C.W VIEWED FROM THE STERN	
OIL CHANGE INTERVAL	THE FIRST 100HOURS OF INITIAL OPERATION		
	AND EVERY 1000HOURS THEREAFTER		
SHIFTING LIMIT	UNDER 50% OF THE RATED ENGINE SPEED		
OIL COOLER	WATER FLOW 60 ~ 80 L/m		
	TEMPERATURE OF COOLING WATER		MAX 32℃
OPERATING TORQUE OF SHIFTING LEVER		UNDER 2.94Nm	




BRACKET DIMENSION

- REMARK
- HOUSING: SAE#1
 - DRIVING RING: SAE 14"
 - COUPLING TYPE : RUBBER
 - APPLICATION ENGINE : STANDARD



"X" detail(3/1)

TOLERANCE ON						번호 NO.	품 PART NO.	부 PART NAME	영 영	개 수 Q'TY	재 재 MATERIAL	규 SIZE	고 비 REMARKS
분 수 FRACTIONS		소 수 DECIMALS		각 도 ANGLES		재 MATERIAL				형 TYPE	원 도 번 ORIGINAL DWG. NO.		
± —		± —		± —						척 도 SCALE	1/1		
± —		± —		± —		승 인 APPROVED BY		검 도 CHECKED BY		제 도 DRAWN		설 계 DESIGNED	
± —		± —		± —		JK.Kim		TH.Cha		MA.Kim		도 DWG. NO.	
± —		± —		± —		JK.Kim		TH.Cha		MA.Kim		24100GA~E-114RC	
± —		± —		± —		JK.Kim		TH.Cha		MA.Kim		개정 (REV.) 000	
± —		± —		± —		JK.Kim		TH.Cha		MA.Kim		크 기 SIZE	
± —		± —		± —		JK.Kim		TH.Cha		MA.Kim		A 8	
± —		± —		± —		JK.Kim		TH.Cha		MA.Kim		고-드 번 호 CODE ID. NO.	
± —		± —		± —		JK.Kim		TH.Cha		MA.Kim		D-I INDUSTRIAL	
± —		± —		± —		JK.Kim		TH.Cha		MA.Kim		D-I INDUSTRIAL	
± —		± —		± —		JK.Kim		TH.Cha		MA.Kim		D-I INDUSTRIAL	
± —		± —		± —		JK.Kim		TH.Cha		MA.Kim		D-I INDUSTRIAL	
± —		± —		± —		JK.Kim		TH.Cha		MA.Kim		D-I INDUSTRIAL	
± —		± —		± —		JK.Kim		TH.Cha		MA.Kim		D-I INDUSTRIAL	
± —		± —		± —		JK.Kim		TH.Cha		MA.Kim		D-I INDUSTRIAL	
± —		± —		± —		JK.Kim		TH.Cha		MA.Kim		D-I INDUSTRIAL	
± —		± —		± —		JK.Kim		TH.Cha		MA.Kim		D-I INDUSTRIAL	
± —		± —		± —		JK.Kim		TH.Cha		MA.Kim		D-I INDUSTRIAL	
± —		± —		± —		JK.Kim		TH.Cha		MA.Kim		D-I INDUSTRIAL	
± —		± —		± —		JK.Kim		TH.Cha		MA.Kim		D-I INDUSTRIAL	
± —		± —		± —		JK.Kim		TH.Cha		MA.Kim		D-I INDUSTRIAL	
± —		± —		± —		JK.Kim		TH.Cha		MA.Kim		D-I INDUSTRIAL	
± —		± —		± —		JK.Kim		TH.Cha		MA.Kim		D-I INDUSTRIAL	
± —		± —		± —		JK.Kim		TH.Cha		MA.Kim		D-I INDUSTRIAL	
± —		± —		± —		JK.Kim		TH.Cha		MA.Kim		D-I INDUSTRIAL	
± —		± —		± —		JK.Kim		TH.Cha		MA.Kim		D-I INDUSTRIAL	
± —		± —		± —		JK.Kim		TH.Cha		MA.Kim		D-I INDUSTRIAL	
± —		± —		± —		JK.Kim		TH.Cha		MA.Kim		D-I INDUSTRIAL	
± —		± —		± —		JK.Kim		TH.Cha		MA.Kim		D-I INDUSTRIAL	
± —		± —		± —		JK.Kim		TH.Cha		MA.Kim		D-I INDUSTRIAL	
± —		± —		± —		JK.Kim		TH.Cha		MA.Kim		D-I INDUSTRIAL	
± —		± —		± —		JK.Kim		TH.Cha		MA.Kim		D-I INDUSTRIAL	
± —		± —		± —		JK.Kim		TH.Cha		MA.Kim		D-I INDUSTRIAL	
± —		± —		± —		JK.Kim		TH.Cha		MA.Kim		D-I INDUSTRIAL	
± —		± —		± —		JK.Kim		TH.Cha		MA.Kim		D-I INDUSTRIAL	
± —		± —		± —		JK.Kim		TH.Cha		MA.Kim		D-I INDUSTRIAL	
± —		± —		± —		JK.Kim		TH.Cha		MA.Kim		D-I INDUSTRIAL	
± —		± —		± —		JK.Kim		TH.Cha		MA.Kim		D-I INDUSTRIAL	
± —		± —		± —		JK.Kim		TH.Cha		MA.Kim		D-I INDUSTRIAL	
± —		± —		± —		JK.Kim		TH.Cha		MA.Kim		D-I INDUSTRIAL	
± —		± —		± —		JK.Kim		TH.Cha		MA.Kim		D-I INDUSTRIAL	
± —		± —		± —		JK.Kim		TH.Cha		MA.Kim		D-I INDUSTRIAL	
± —		± —		± —		JK.Kim		TH.Cha		MA.Kim		D-I INDUSTRIAL	
± —		± —		± —		JK.Kim		TH.Cha		MA.Kim		D-I INDUSTRIAL	
± —		± —		± —		JK.Kim		TH.Cha		MA.Kim		D-I INDUSTRIAL	
± —		± —		± —		JK.Kim		TH.Cha		MA.Kim		D-I INDUSTRIAL	
± —		± —		± —		JK.Kim		TH.Cha		MA.Kim		D-I INDUSTRIAL	
± —		± —		± —		JK.Kim		TH.Cha		MA.Kim		D-I INDUSTRIAL	
± —		± —		± —		JK.Kim		TH.Cha		MA.Kim		D-I INDUSTRIAL	
± —		± —		± —		JK.Kim		TH.Cha		MA.Kim		D-I INDUSTRIAL	
± —		± —		± —		JK.Kim		TH.Cha		MA.Kim		D-I INDUSTRIAL	
± —		± —		± —		JK.Kim		TH.Cha		MA.Kim		D-I INDUSTRIAL	
± —		± —		± —		JK.Kim		TH.Cha		MA.Kim		D-I INDUSTRIAL	
± —		± —		± —		JK.Kim		TH.Cha		MA.Kim		D-I INDUSTRIAL	
± —		± —		± —		JK.Kim		TH.Cha		MA.Kim		D-I INDUSTRIAL	
± —		± —		± —		JK.Kim		TH.Cha		MA.Kim		D-I INDUSTRIAL	
± —		± —		± —		JK.Kim		TH.Cha		MA.Kim		D-I INDUSTRIAL	
± —		± —		± —		JK.Kim		TH.Cha		MA.Kim		D-I INDUSTRIAL	
± —		± —		± —		JK.Kim		TH.Cha		MA.Kim		D-I INDUSTRIAL	
± —		± —		± —		JK.Kim		TH.Cha		MA.Kim		D-I INDUSTRIAL	
± —		± —		± —		JK.Kim		TH.Cha		MA.Kim		D-I INDUSTRIAL	
± —		± —		± —		JK.Kim		TH.Cha		MA.Kim		D-I INDUSTRIAL	
± —		± —		± —		JK.Kim		TH.Cha		MA.Kim		D-I INDUSTRIAL	
± —		± —		± —		JK.Kim		TH.Cha		MA.Kim		D-I INDUSTRIAL	
± —		± —		± —		JK.Kim		TH.Cha		MA.Kim		D-I INDUSTRIAL	
± —		± —		± —		JK.Kim		TH.Cha		MA.Kim		D-I INDUSTRIAL	
± —		± —		± —		JK.Kim		TH.Cha		MA.Kim		D-I INDUSTRIAL	
± —		± —		± —									