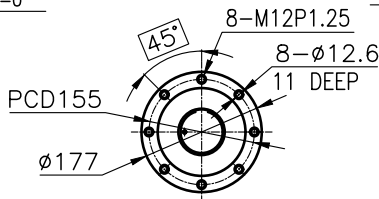
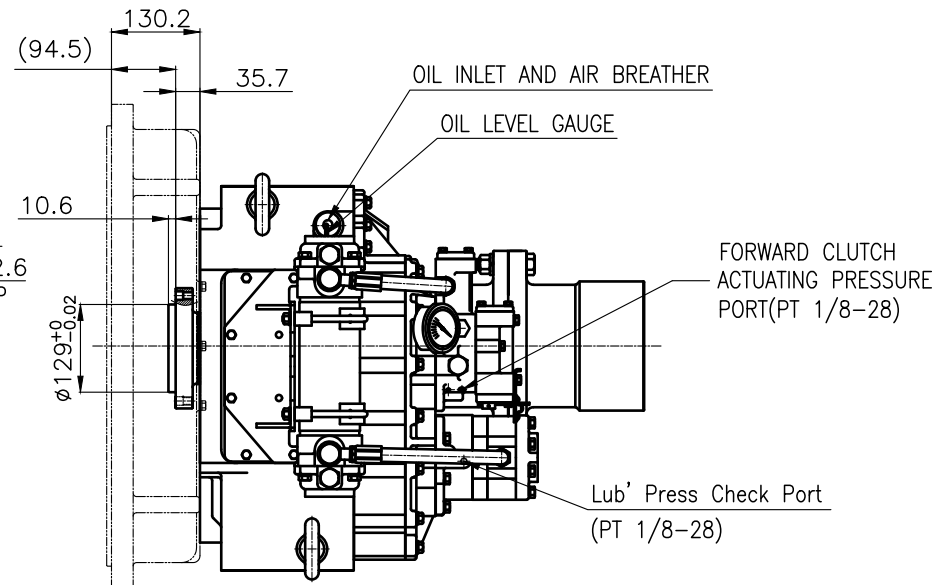


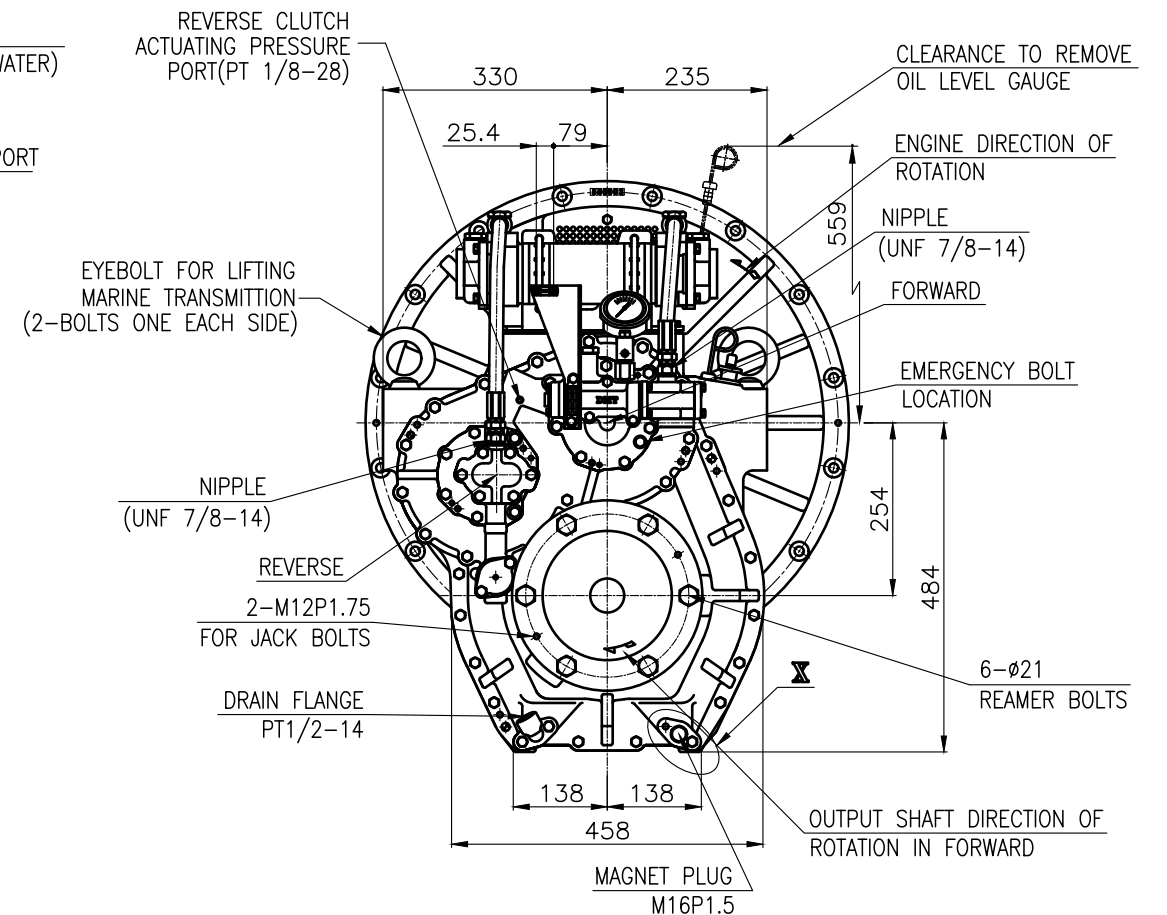
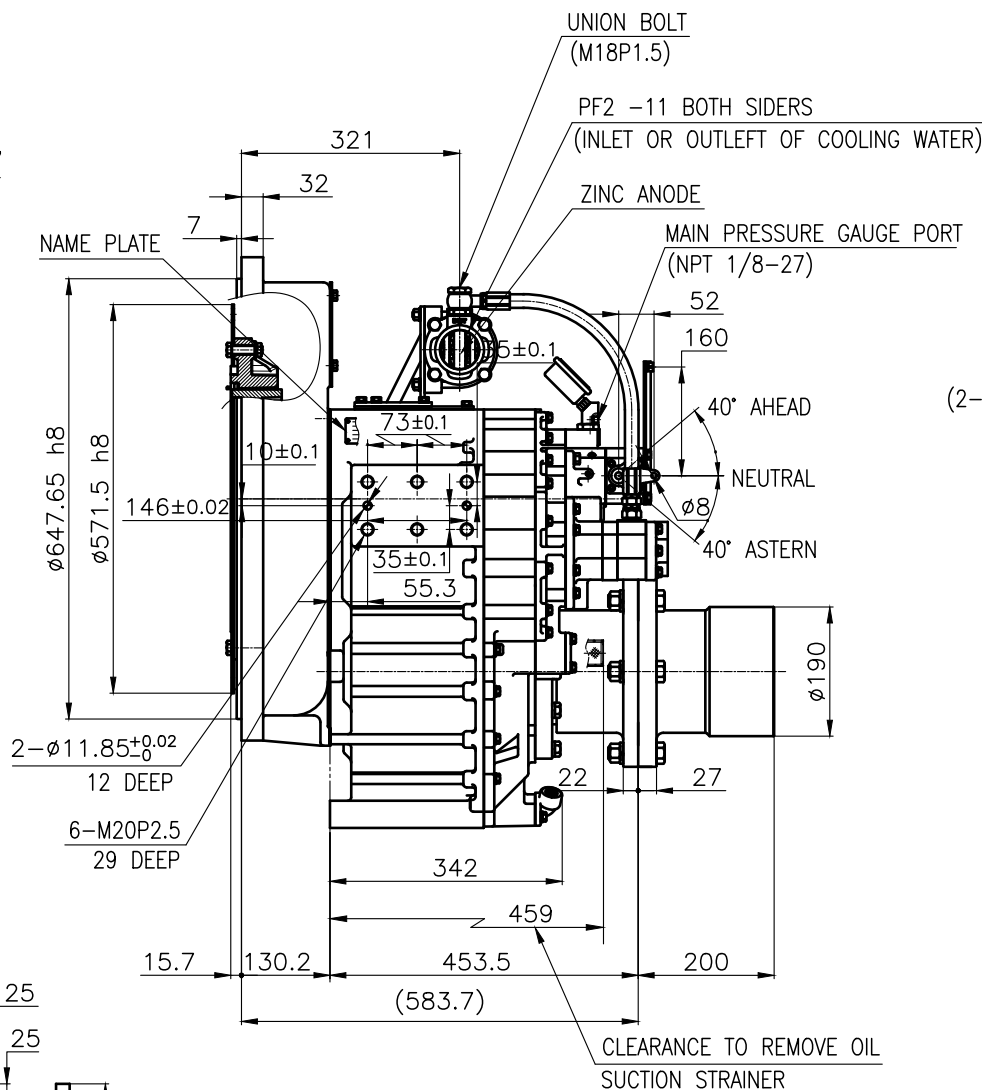
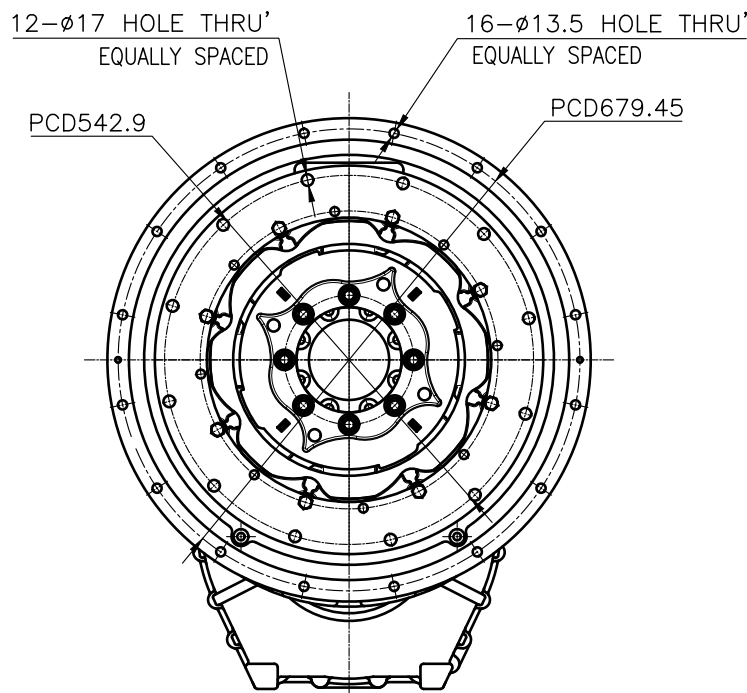
OUTPUT SHAFT COUPLING &
PROPELLER COUPLING DIMENSION



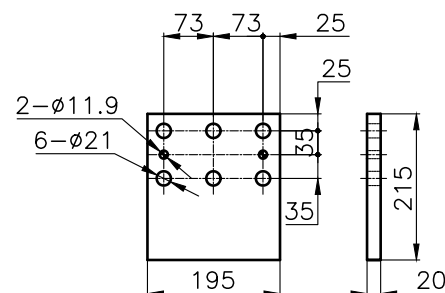
INPUT COUPLING
DIMENSION



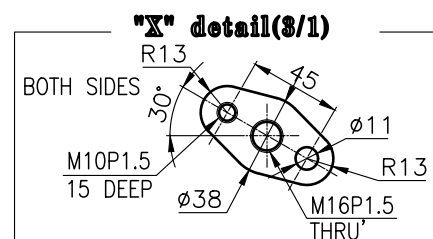
DMT260H MARINE TRANSMISSION SPECIFICATION			
GEAR RATIO	2.06, 2.50, 2.92, 3.26		
TOTAL WEIGHT	APPROX. 490 Kg(DRY)		
OIL CAPACITY	APPROX. 8 L		
OIL VISCOSITY	SAE # 30		
OIL PRESSURE	1.96 ~ 2.54 MPa		CLUTCH OIL
DIRECTION OF ROTATION IN FORWARD	INPUT	C.C.W VIEWED FROM THE STERN	
	OUTPUT	C.W VIEWED FROM THE STERN	
OIL CHANGE INTERVAL	THE FIRST 100HOURS OF INITIAL OPERATION		
	AND EVERY 1000HOURS THEREAFTER		
SHIFTING LIMIT	UNDER 50% OF THE RATED ENGINE SPEED		
OIL COOLER	WATER FLOW 60 ~ 80 L/min		
	TEMPERATURE OF COOLING WATER		MAX 32℃
OPERATING TORQUE OF SHIFTING LEVER			UNDER 2.94Nm





- REMARK
- 1.HOUSING: SAE#0
 - 2.DRIVING RING: SAE 18"
 - 3.COUPLING TYPE
CENTA Flex Coupling (77268802)



BRACKET DIMENSION



공용 공차 TOLERANCE ON					번호 NO.	품 PART NO.	명 PART NAME		개 수 Q'TY	재 질 MATERIAL	규 격 SIZE	비 고 REMARKS		
분 수 FRACTIONS		소 수 DECIMALS		각 도 ANGLES	재 질 MATERIAL				형 식 TYPE	DMT260H		원 도 번 ORIGINAL DWG. NO.		
± —		± —		± —										
일 반 원 자	정 사 가 공					작성 DATE 2018.06.29	척 도 SCALE 1/1							
	구	절	조	중	정	승 인 APPROVED BY	검 도 CHECKED BY	제 도 DRAWN	설 계 DESIGNED	품 명 NAME	MARINE TRANSMISSION			
	1 초과 4 이하	± 0.3	± 0.1	± 0.05		JK.Kim	TH.Cha	CH.Baek		도 번 DWG. NO.	25000GA~D-018CFR		개정 (REV.) 000	
	4 16	± 0.5	± 0.2	± 0.07										
	16 63	± 0.7	± 0.3	± 0.1										
63 250	± 1.2	± 0.5	± 0.2											
250 1000	± 2.0	± 0.8	± 0.3											
					 D-I INDUSTRIAL				크 기 SIZE	A 3	코-드 번 호 CODE ID. NO.			