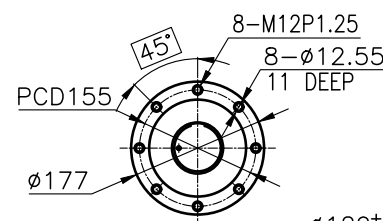
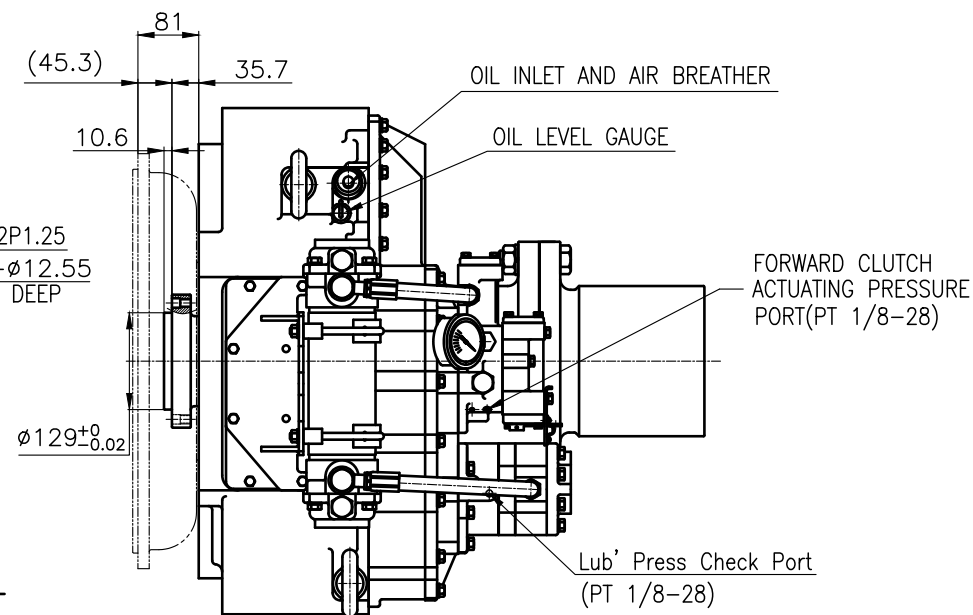


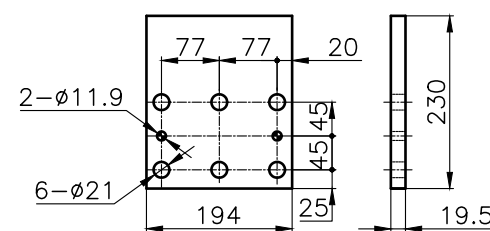
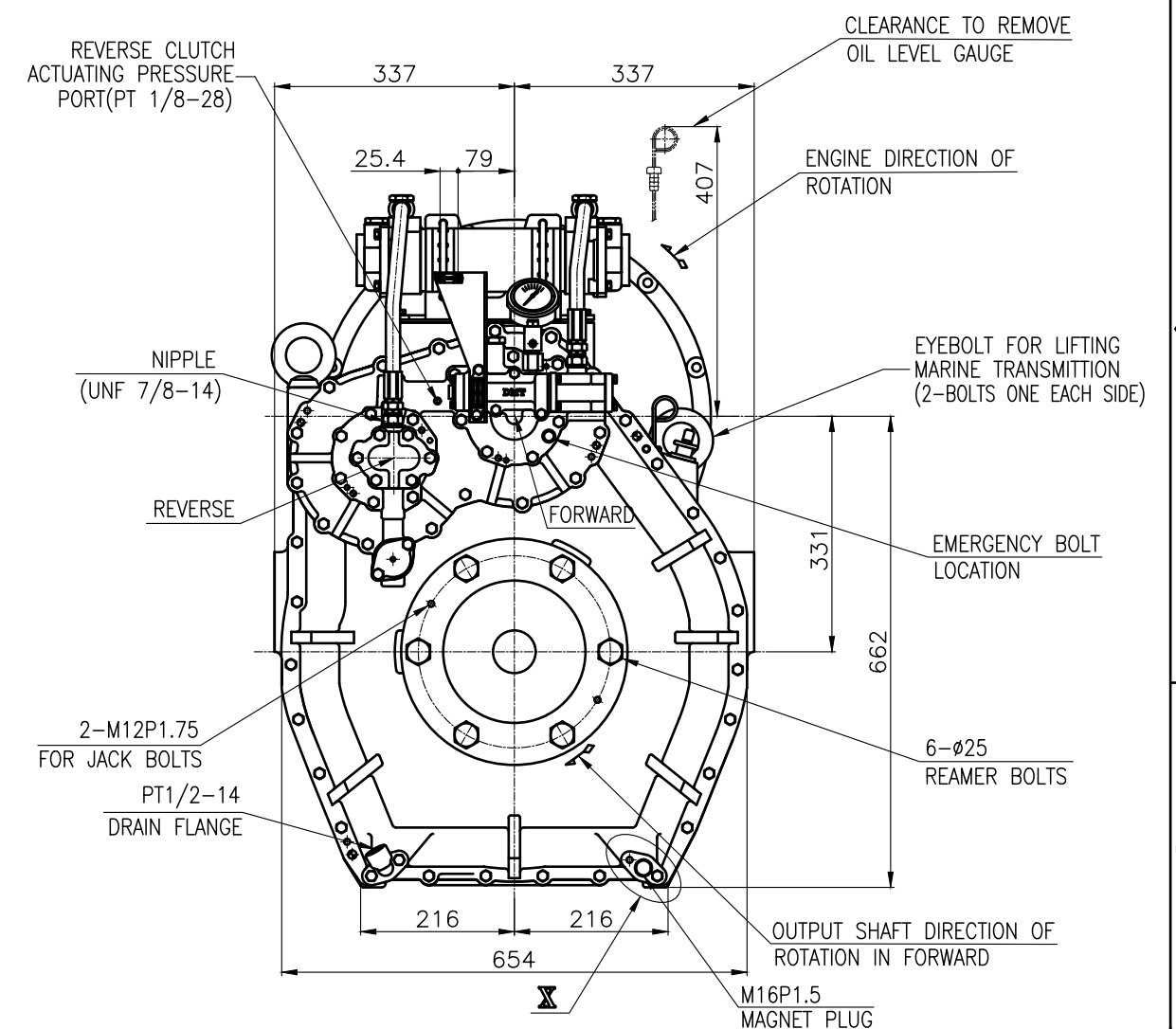
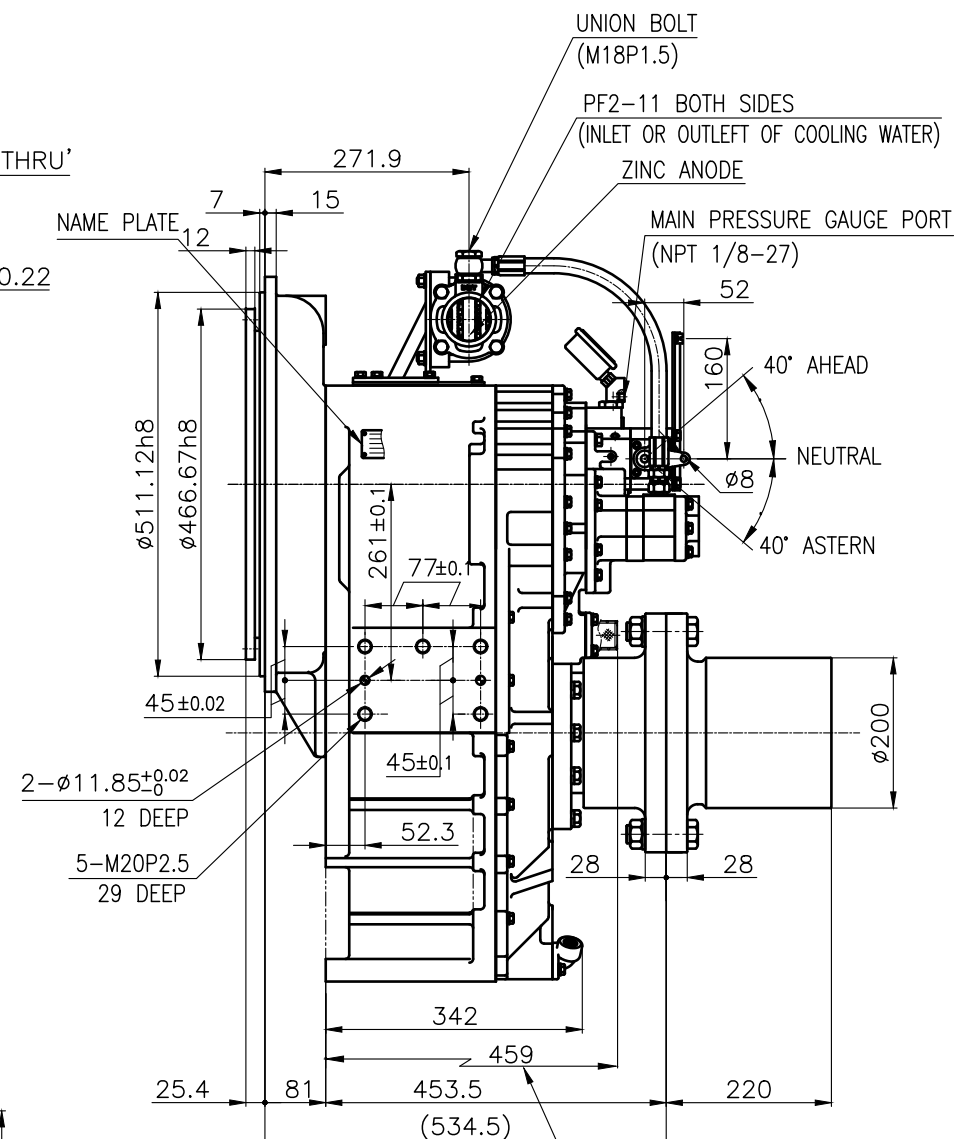
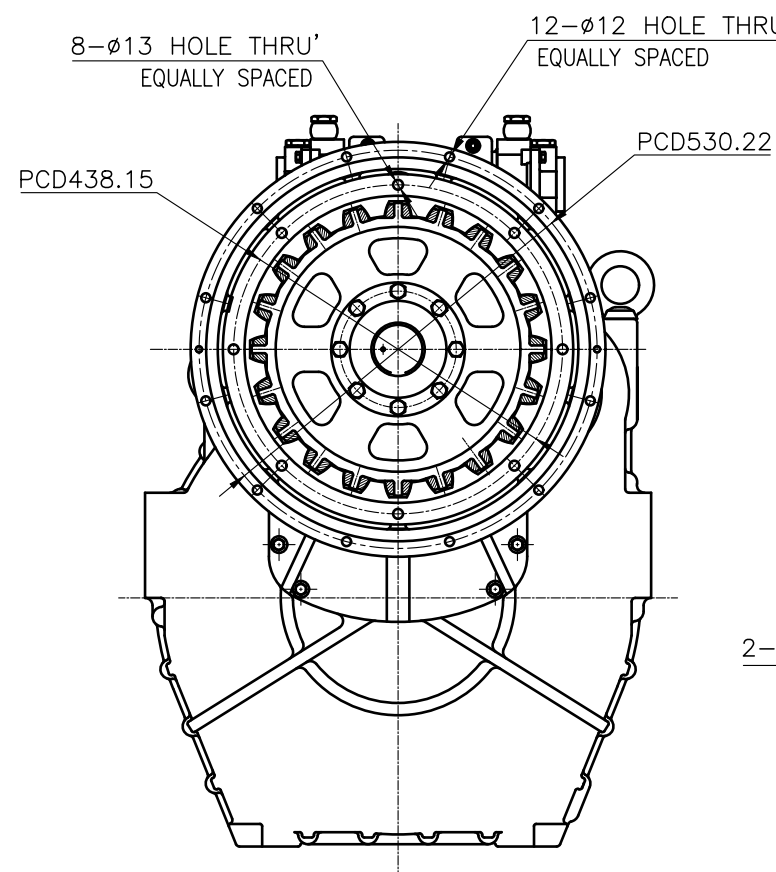
OUTPUT SHAFT COUPLING & PROPELLER COUPLING DIMENSION



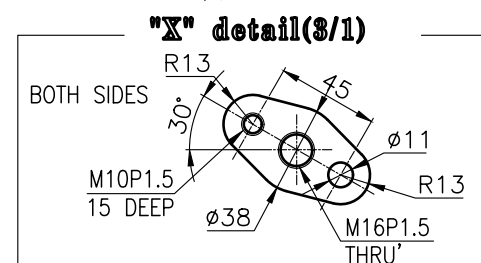
INPUT COUPLING DIMENSION



DMT260HL MARINE TRANSMISSION SPECIFICATION			
GEAR RATIO	3.53, 4.08, 4.52, 5.04		
TOTAL WEIGHT	APPROX. 640 Kg(DRY)		
OIL CAPACITY	APPROX. 19 L		
OIL VISCOSITY	SAE # 30		
OIL PRESSURE	1.96 ~ 2.54 MPa	CLUTCH OIL	
DIRECTION OF ROTATION IN FORWARD	INPUT	C.C.W VIEWED FROM THE STERN	
	OUTPUT	C.W VIEWED FROM THE STERN	
OIL CHANGE INTERVAL	THE FIRST 100HOURS OF INITIAL OPERATION		
	AND EVERY 1000HOURS THEREAFTER		
SHIFTING LIMIT	UNDER 50% OF THE RATED ENGINE SPEED		
OIL COOLER	WATER FLOW 60 ~ 80 L/min		
	TEMPERATURE OF COOLING WATER		MAX 32℃
OPERATING TORQUE OF SHIFTING LEVER		UNDER 2.94Nm	



BRACKET DIMENSION




CLEARANCE TO REMOVE OIL
SUCTION STRAINER

REMARK 6-9

1.HOUSING: SAE#1

2.DRIVING RING: SAE 14"

3.COUPLING TYPE : RUBBER

정밀공차 TOLERANCE ON					번호 NO.		품 PART NO.		명 PART NAME		개수 Q'TY		재 MATERIAL		규 SIZE		비 고 REMARKS	
분수 FRACTIONS 소수 DECIMALS 각도 ANGLES					재 MATERIAL		작성 DATE 2018.06.29		척 도 SCALE 1/1		형 식 TYPE		DMT260HL		원 도 번 ORIGINAL DWG. NO.			
± — ± — ± —							승 인 APPROVED BY JK.Kim		검 도 CHECKED BY KS.Han		제 도 DRAWN BJ.Moon		품 명 NAME MARINE TRANSMISSION					
밀 반 차	집 사 가 공																	
	구 현	조 급	총 급	정 급														
	1 초과 4 이하	± 0.3	± 0.1	± 0.05														
	4 16	± 0.5	± 0.2	± 0.07														
	16 63	± 0.7	± 0.3	± 0.1														
	63 250	± 1.2	± 0.5	± 0.2														
	250 1000	± 2.0	± 0.8	± 0.3														
D-I INDUSTRIAL											크 기 SIZE		A 3		코-드 번 호 CODE ID. NO.			