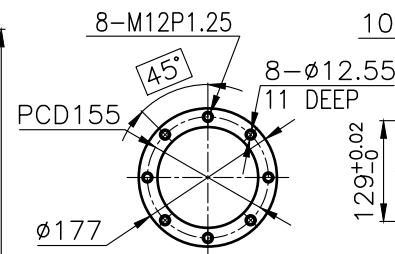
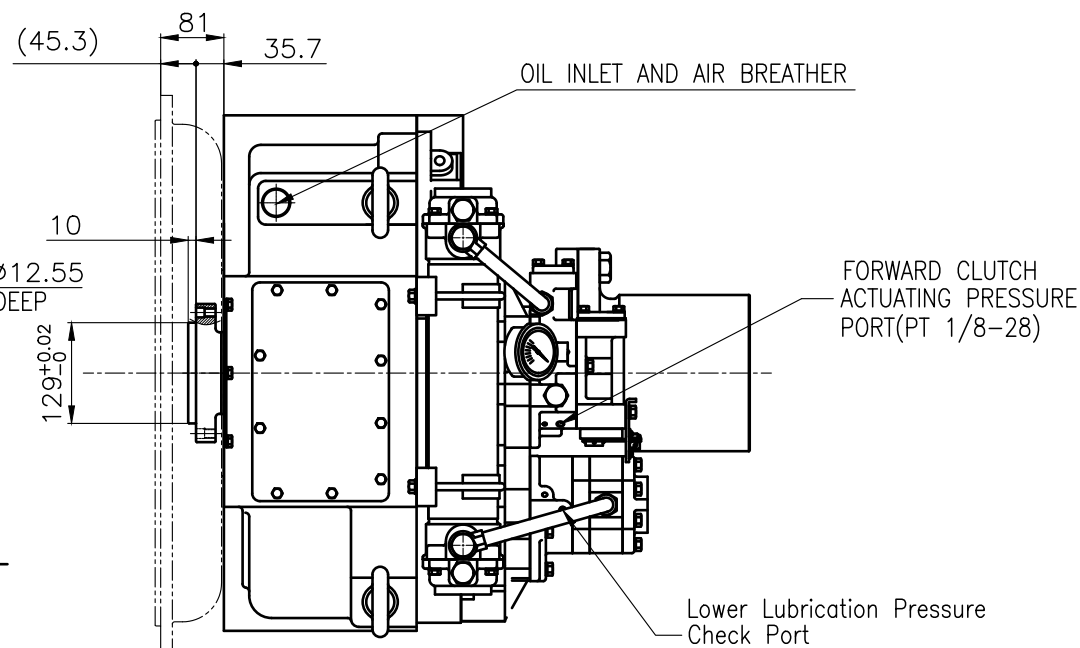


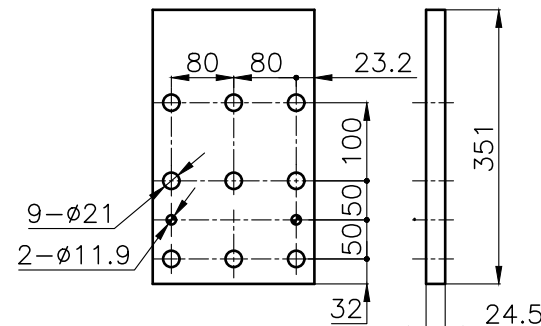
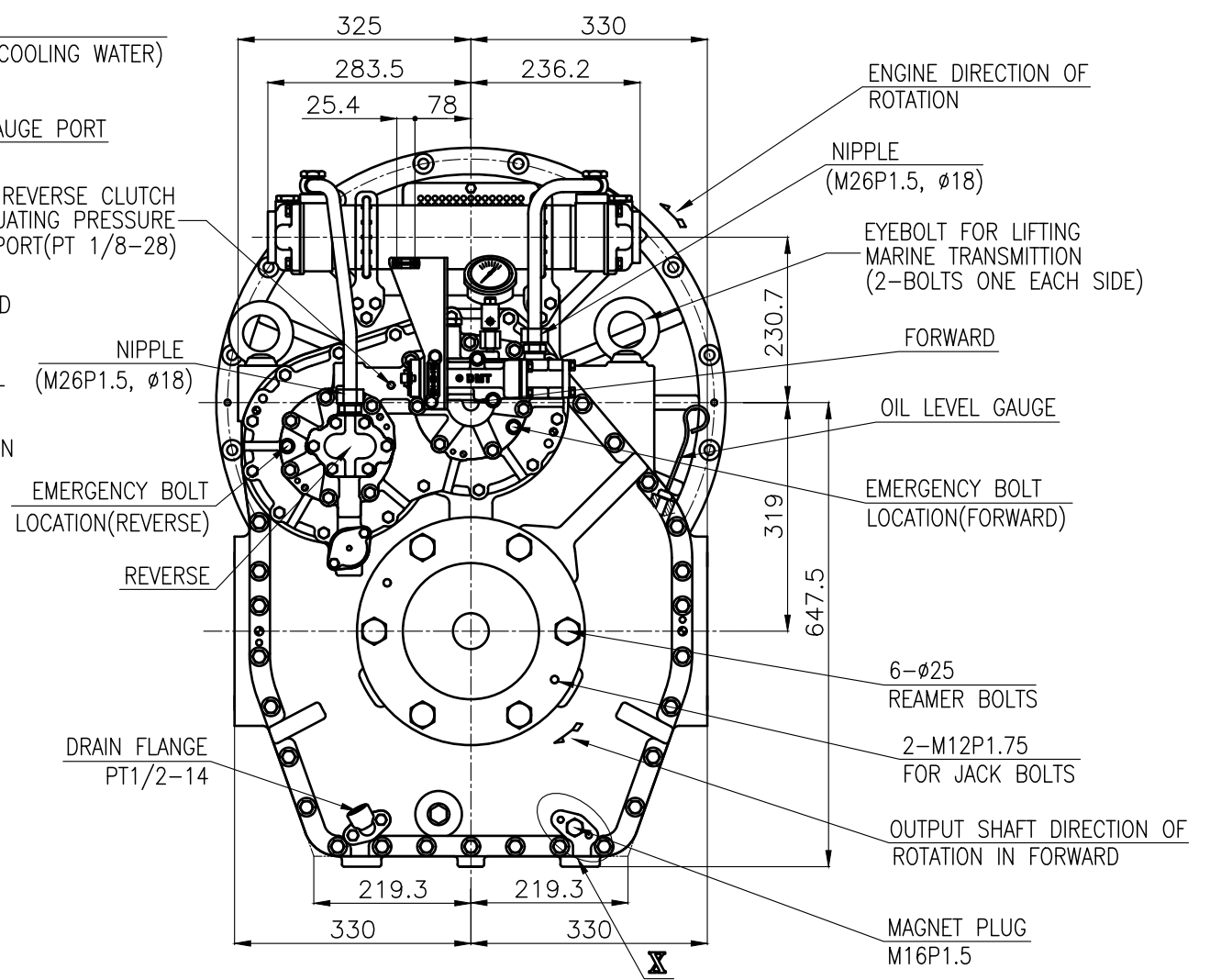
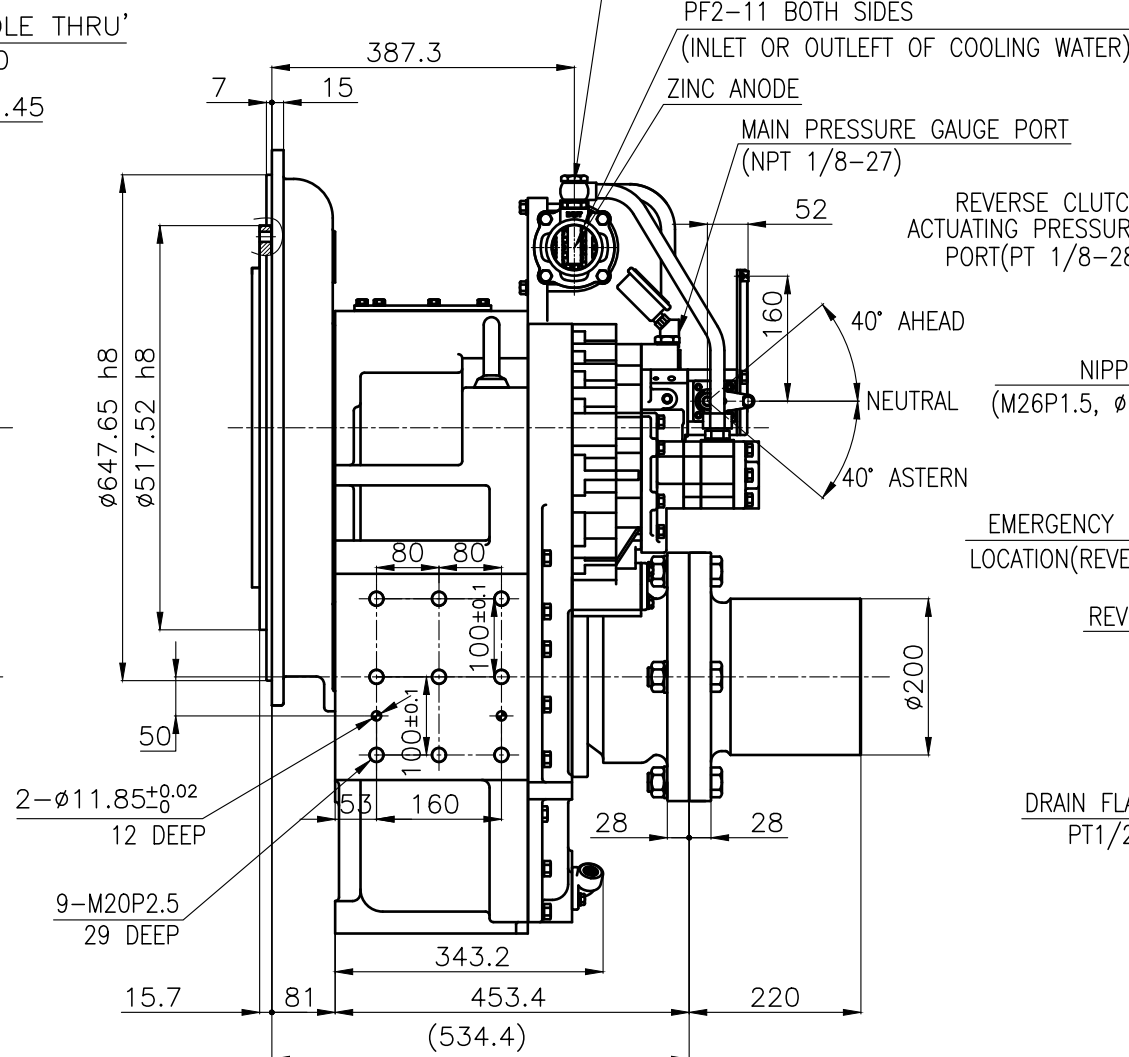
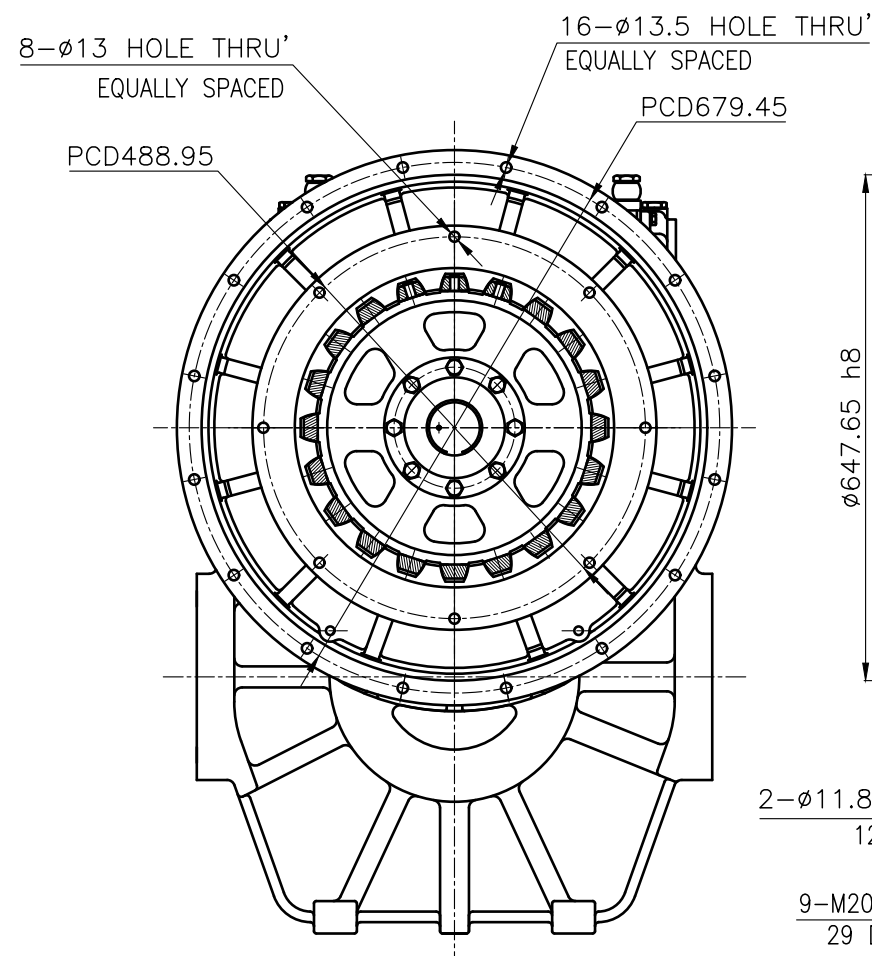
### OUTPUT SHAFT COUPLING & PROPELLER COUPLING DIMENSION



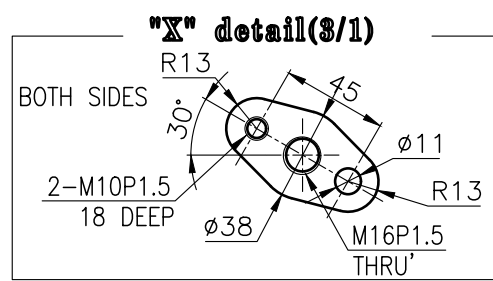
## INPUT COUPLING DIMENSION





DMT300HL MARINE TRANSMISSION SPECIFICATION			
GEAR RATIO	2.61, 3.10, 3.56, 4.13, 4.59		
TOTAL WEIGHT	APPROX. 847 Kg(DRY)		
OIL CAPACITY	APPROX. 16.5 L		
OIL VISCOSITY	SAE #30		
OIL PRESSURE	1.96 ~ 2.54 MPa	CLUTCH OIL	
DIRECTION OF ROTATION IN FORWARD	INPUT	C.C.W VIEWED FROM THE STERN	
	OUTPUT	C.W VIEWED FROM THE STERN	
OIL CHANGE INTERVAL	THE FIRST 100HOURS OF INITIAL OPERATION		
	AND EVERY 1000HOURS THEREAFTER		
SHIFTING LIMIT	UNDER 50% OF THE RATED ENGINE SPEED		
OIL COOLER	WATER FLOW 90 ~ 120L/m		
	TEMPERATURE OF COOLING WATER		MAX 32°
OPERATING TORQUE OF SHIFTING LEVER			UNDER 2.94Nm



BRACKET DIMENSION



REMARK  
1.HOUSING : SAE# 0  
2.DRIVING RING : SAE 16"  
3.COUPLING TYPE : RUBBER

공 동 공 차 TOLERANCE ON						번 호 NO.		품 PART NO.		품 PART NAME		개 수 Q'TY		재 집 MATERIAL		규 SIZE		비 고 REMARKS	
분 수 소 수 각 도 FRACTIONS DECIMALS ANGLES																		원 도 번 ORIGINAL DWG. NO.	
± — ± — ± —								작성 DATE 2018.06.29		척 도 SCALE N/S		형 식 TYPE		DMT300HL					
절 삭 가 광						승 인 APPROVED BY		검 도 CHECKED BY		제 도 DRAWN		설 계 DESIGNED		품 명 NAME		MARINE TRANSMISSION			
구 분 조 급 중 급 정 급						JK.Kim		TH.Cha		GH.Park				도 번 DWG. NO.		30000GA~E-016RC		개정(REV.) 000	
1 초 과 4 이 하 ± 0.3 ± 0.1 ± 0.05																			
4 16 ± 0.5 ± 0.2 ± 0.07																			
16 63 ± 0.7 ± 0.3 ± 0.1																			
63 250 ± 1.2 ± 0.5 ± 0.2																			
250 1000 ± 2.0 ± 0.8 ± 0.3																			
차						 D-I INDUSTRIAL						크 기 SIZE		A 3		코 드 번 호 CODE ID. NO.			