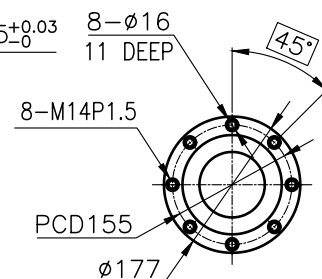
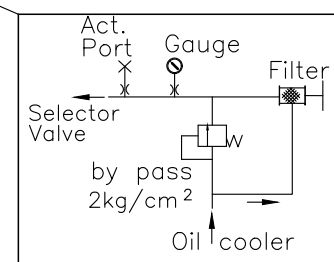
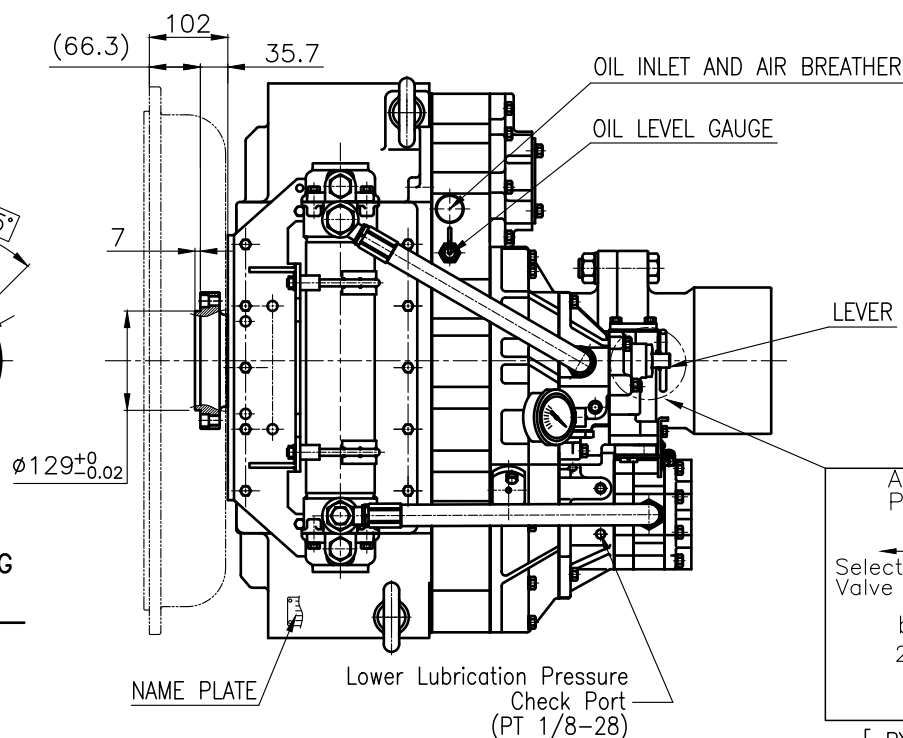


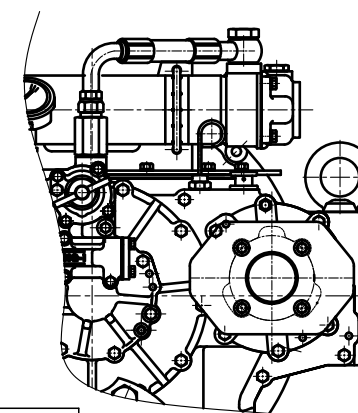
OUTPUT SHAFT COUPLING & PROPELLER COUPLING DIMENSION



INPUT COUPLING DIMENSION

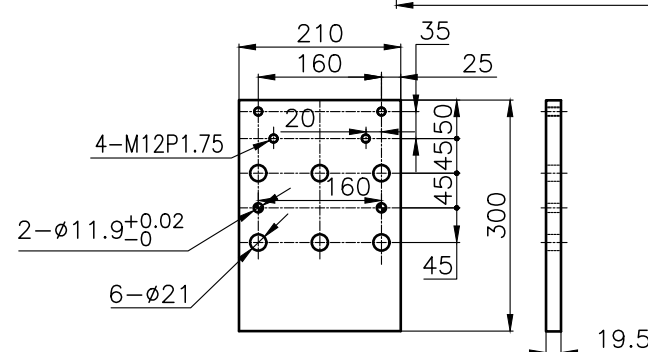
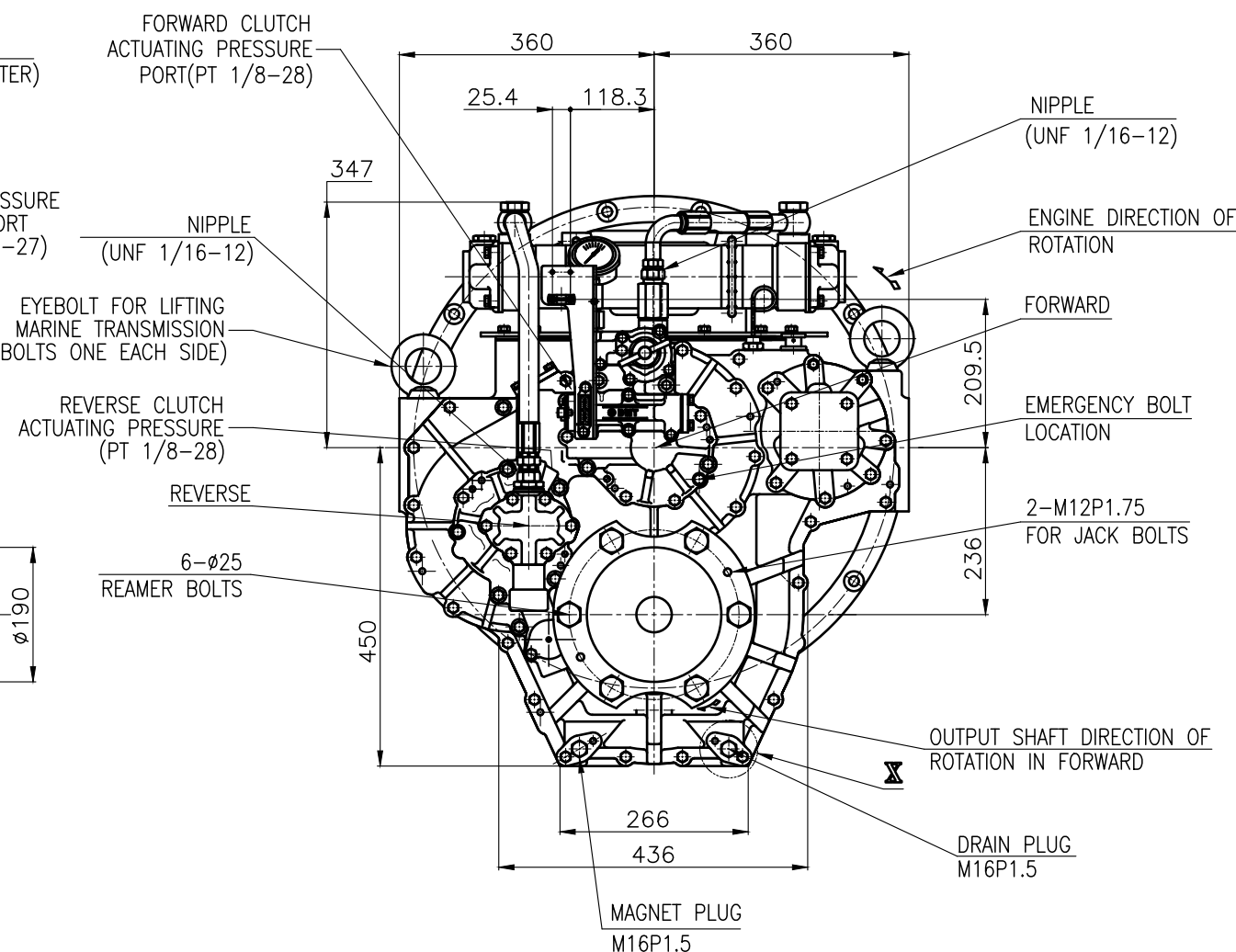
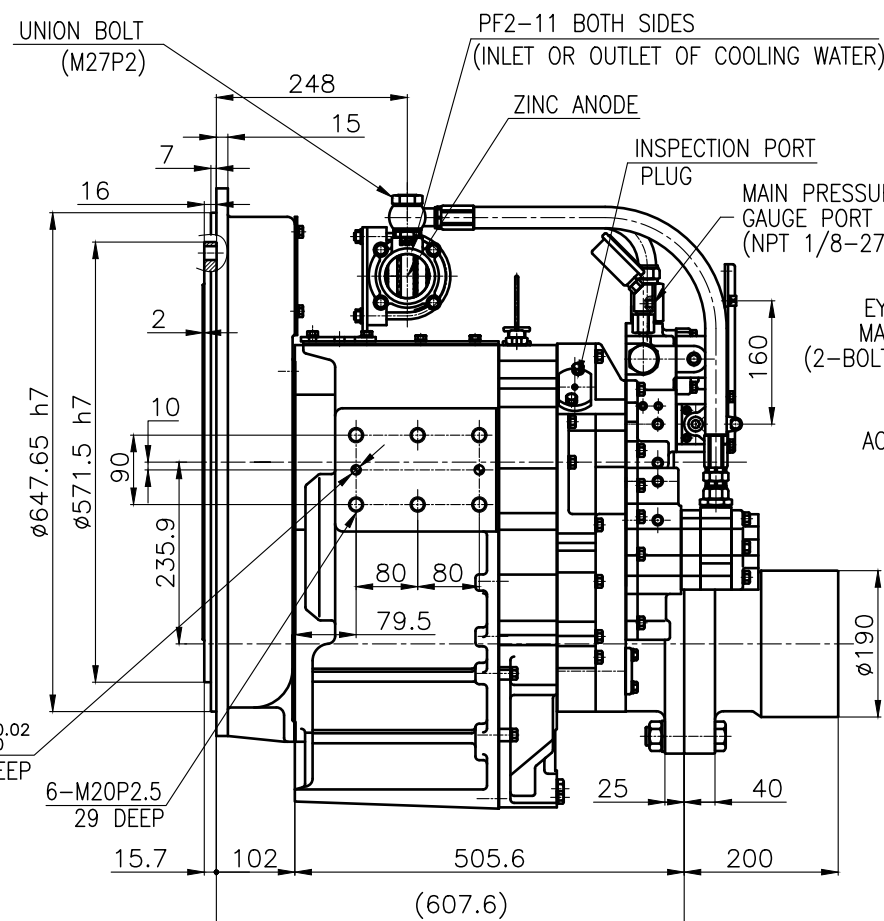
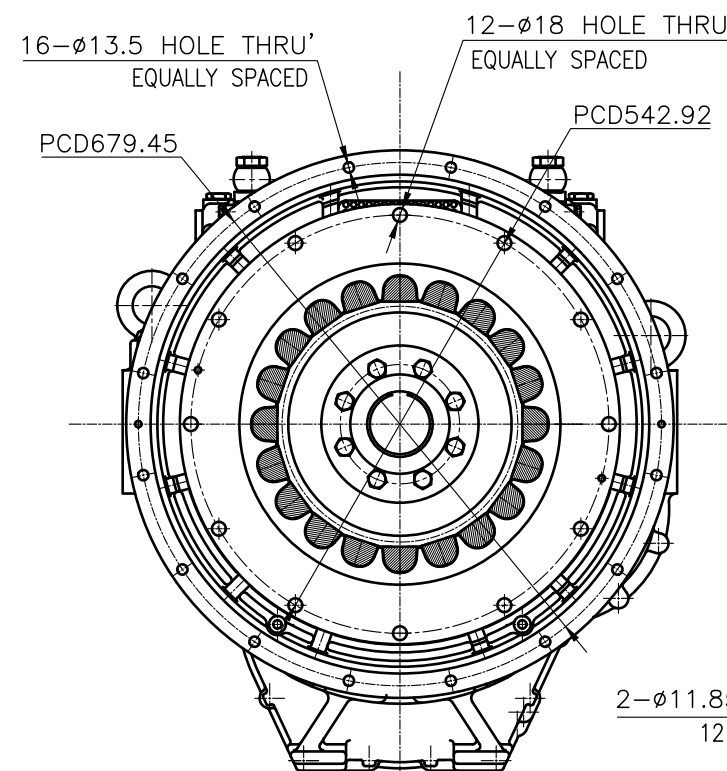


[BY PASS SYSTEM]

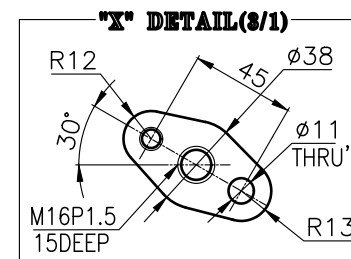


P.T.O ATTACHED

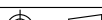
DMT400H MARINE TRANSMISSION SPECIFICATION			
GEAR RATIO	1.43, 1.72, 2.03, 2.46, 2.75		
TOTAL WEIGHT	APPROX. 660 Kg(DRY)		
OIL CAPACITY	APPROX. 9 L		
OIL VISCOSITY	SAE # 30		
OIL PRESSURE	1.96 ~ 2.54 MPa	CLUTCH OIL	
DIRECTION OF ROTATION IN FORWARD	INPUT	C.C.W VIEWED FROM THE STERN	
	OUTPUT	C.W VIEWED FROM THE STERN	
OIL CHANGE INTERVAL	THE FIRST 100HOURS OF INITIAL OPERATION		
	AND EVERY 1000HOURS THEREAFTER		
SHIFTING LIMIT	UNDER 50% OF THE RATED ENGINE SPEED		
OIL COOLER	WATER FLOW 40 ~ 60 L/m		
	TEMPERATURE OF COOLING WATER		MAX 32℃
OPERATING TORQUE OF SHIFTING LEVER			UNDER 2.94Nm



BRACKET DIMENSION



REMARK
1.HOUSING : SAE# 0
2.DRIVING RING : SAE 18"
3.COUPLING TYPE : RUBBER

허용치차 TOLERANCE ON					번호 NO.		품 PART NO.		품 PART NAME 명		개수 Q'TY		재질 MATERIAL		규격 SIZE		비고 REMARKS		
분수 FRACTIONS 소수 DECIMALS 각도 ANGLES ± — ± — ± —					재질 MATERIAL						형식 TYPE		DMT400H				원도 번호 ORIGINAL DWG. NO.		
절삭가공							작성 DATE 2018.06.29		척도 SCALE N/S		품명 NAME		MARINE TRANSMISSION						
<div><div>구경</div><div>외경</div><div>조공</div><div>종공</div><div>정공</div></div>					승인 APPROVED BY		검토 CHECKED BY		제도 DRAWN		설계 DESIGNED		도번 DWG. NO.		40000GA~E-018RC				
<div><div>1 초과 4 이하</div><div>4</div><div>16</div><div>63</div><div>63 250</div><div>250 1000</div></div>					JK.Kim		TH.Cha		BJ.Moon				크기 SIZE		A 3		코드번호 CODE ID. NO.		
<div><div>± 0.3</div><div>± 0.1</div><div>± 0.05</div><div>± 0.5</div><div>± 0.2</div><div>± 0.07</div><div>± 0.7</div><div>± 0.3</div><div>± 0.1</div><div>± 1.2</div><div>± 0.5</div><div>± 0.2</div><div>± 2.0</div><div>± 0.8</div><div>± 0.3</div></div>					D-I INDUSTRIAL														