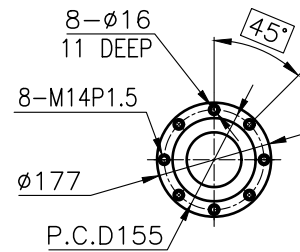
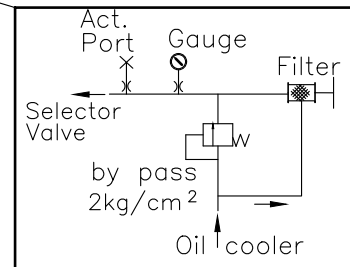
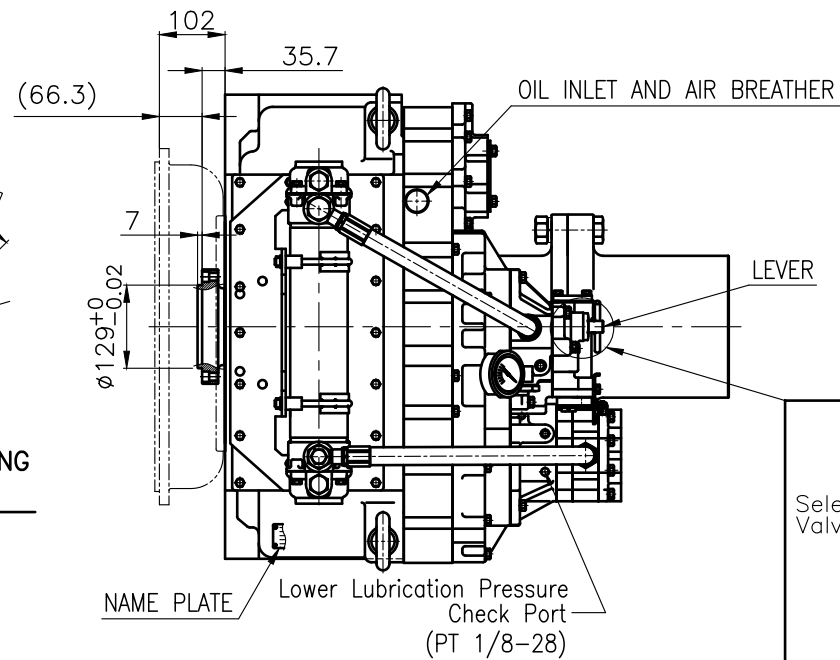


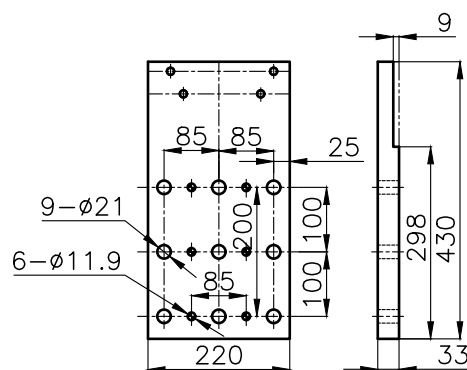
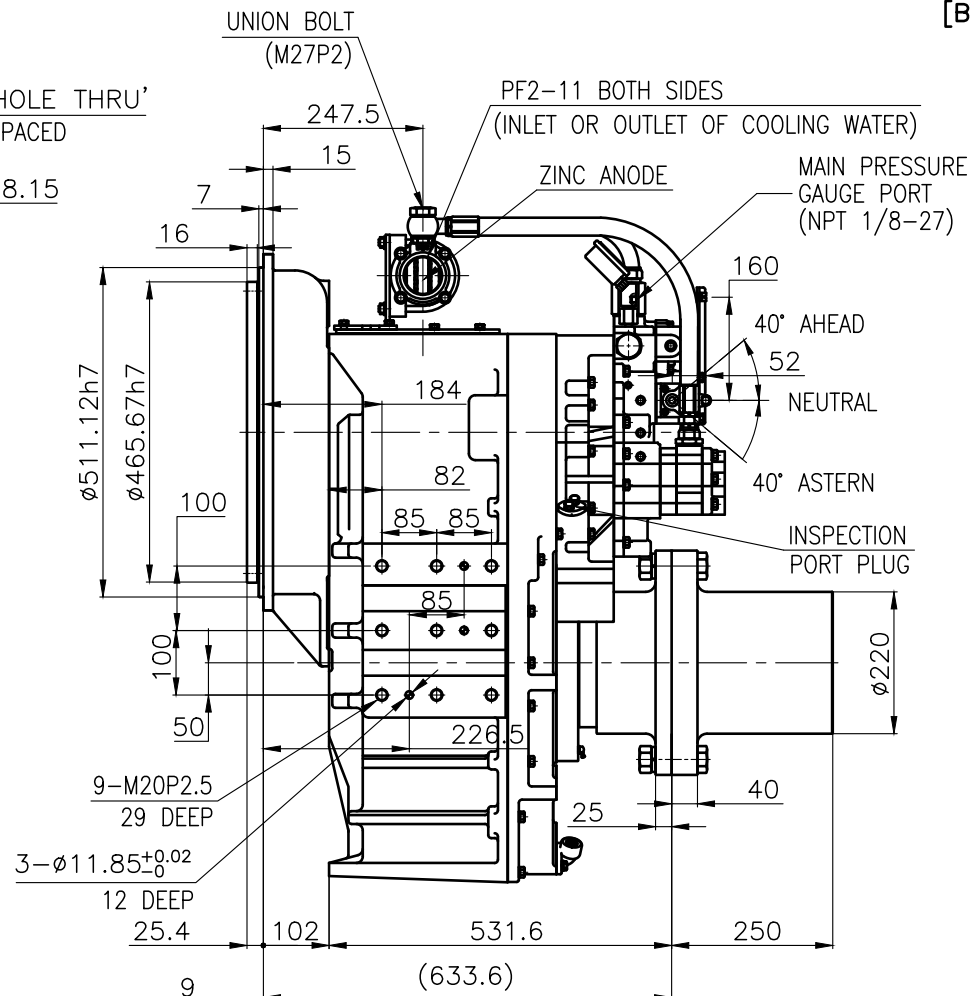
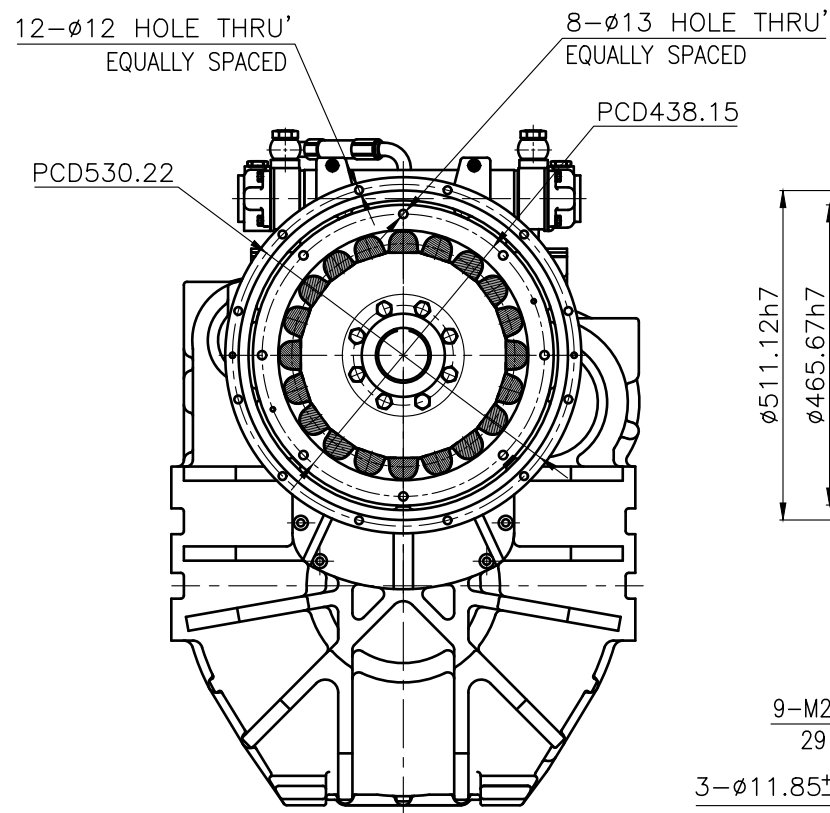
OUTPUT SHAFT COUPLING & PROPELLER COUPLING DIMENSION



INPUT COUPLING DIMENSION

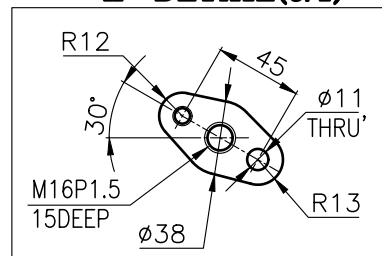


[BY PASS SYSTEM]



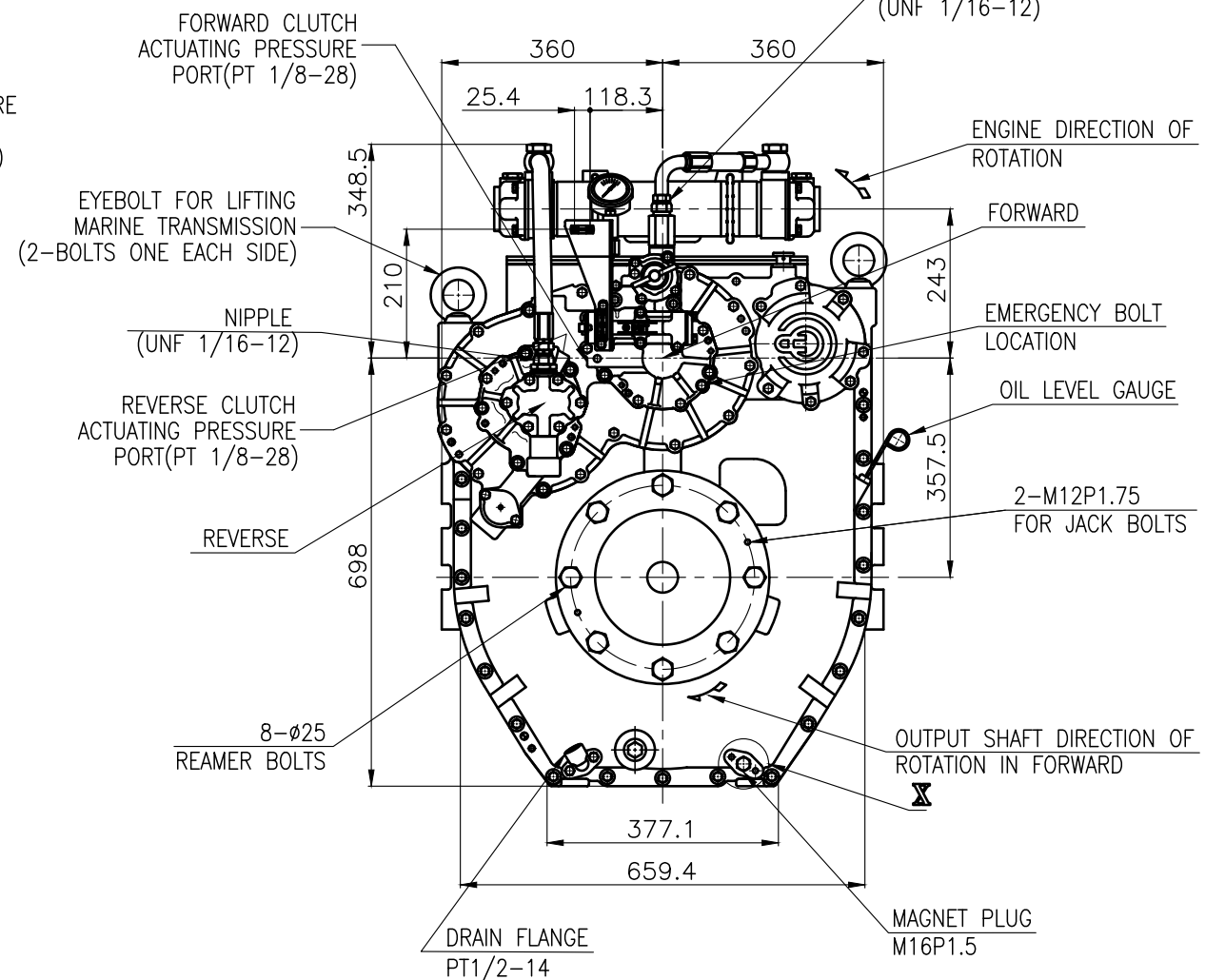
BRACKET DIMENSION


"X" DETAIL(3/1)



- REMARK
- 1.HOUSING : SAE# 1
  - 2.DRIVING RING : SAE 14"
  - 3.COUPLING TYPE : RUBBER

DMT460HL MARINE TRSANMISSION SPECIFICATION			
GEAR RATIO	3.02, 3.28, 3.56, 4.07, 4.48, 4.95		
TOTAL WEIGHT	APPROX. 955 Kg(DRY)		
OIL CAPACITY	APPROX. 18L		
OIL VISCOSITY	SAE # 30		
OIL PRESSURE	1.96 ~ 2.54 MPa	CLUTCH OIL	
DIRECTION OF ROTATION IN FORWARD	INPUT	C.C.W VIEWED FROM THE STERN	
	OUTPUT	C.W VIEWED FROM THE STERN	
OIL CHANGE INTERVAL	THE FIRST 100HOURS OF INITIAL OPERATION		
	AND EVERY 1000HOURS THEREAFTER		
SHIFTING LIMIT	UNDER 50% OF THE RATED ENGINE SPEED		
OIL COOLER	WATER FLOW 90 ~ 120 L/min		
	TEMPERATURE OF COOLING WATER		MAX 32℃
OPERATING TORQUE OF SHIFTING LEVER		UNDER 2.94Nm	



평 등 공 차 TOLERANCE ON						번 호 NO.	부 분 PART NO.	부 분 PART NAME		개 수 Q'TY	재 질 MATERIAL	규 격 SIZE	비 고 REMARKS			
분 수 FRACTIONS		소 수 DECIMALS		각 도 ANGLES								원 도 번 ORIGINAL DWG. NO.				
± ———		± ———		± ———												
일 반 차	절 삭 가 공							작 성 DATE 2018.06.29		척 도 SCALE N/S						
	구 분		조 급		중 급		정 급		승 인 APPROVED BY		검 도 도 CHECKED BY		재 도 도 DRAWN		설 계 DESIGNED	
	1 초 과 4 이 하		± 0.3		± 0.1		± 0.05		JK.Kim		TH.Cha		MA.Kim			
	4 16		± 0.5		± 0.2		± 0.07									
	16 63		± 0.7		± 0.3		± 0.1									
	63 250		± 1.2		± 0.5		± 0.2									
250 1000		± 2.0		± 0.8		± 0.3										
D-I INDUSTRIAL										크 기 SIZE	A 3	코 드 번 호 CODE ID. NO.				