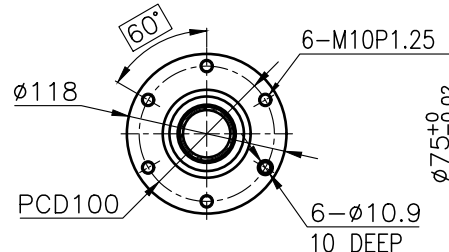
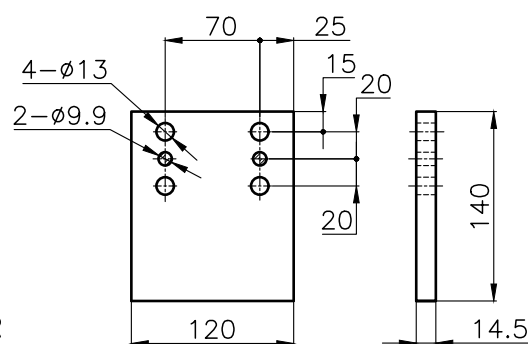
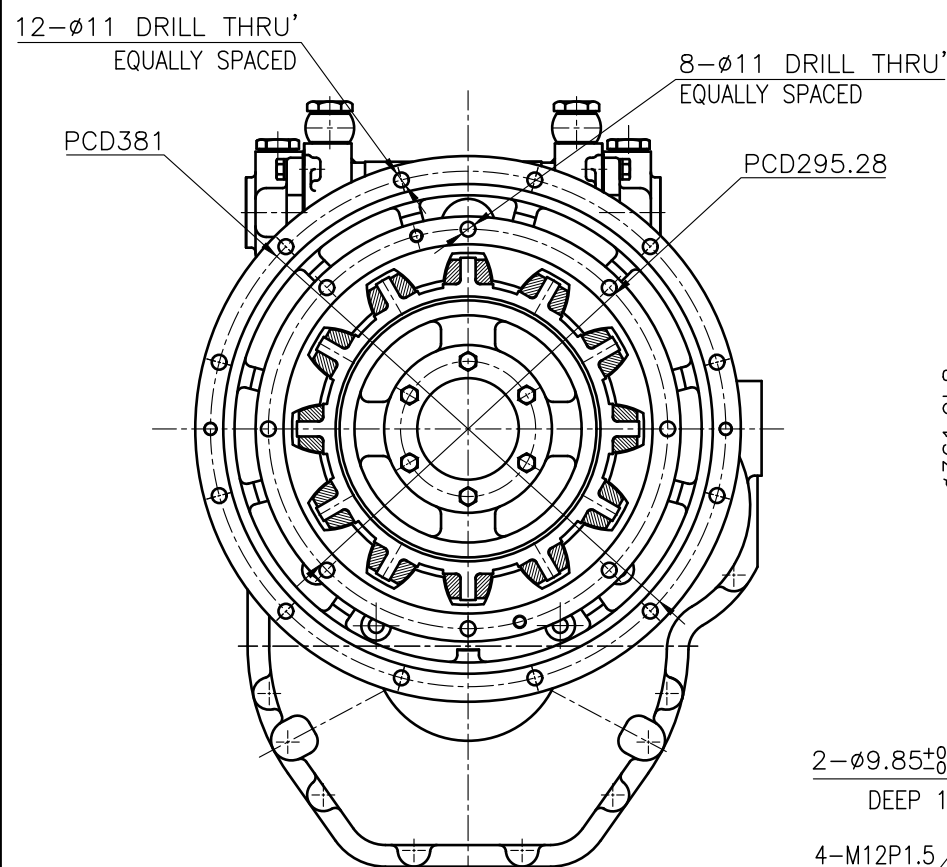
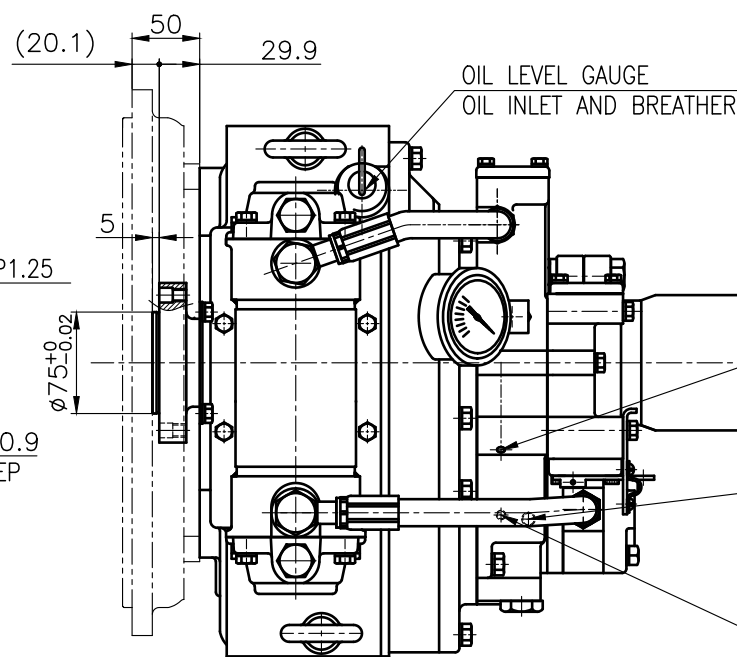


OUTPUT SHAFT COUPLING & PROPELLER COUPLING DIMENSION



INPUT COUPLING DIMENSION



BRACKET DIMENSION

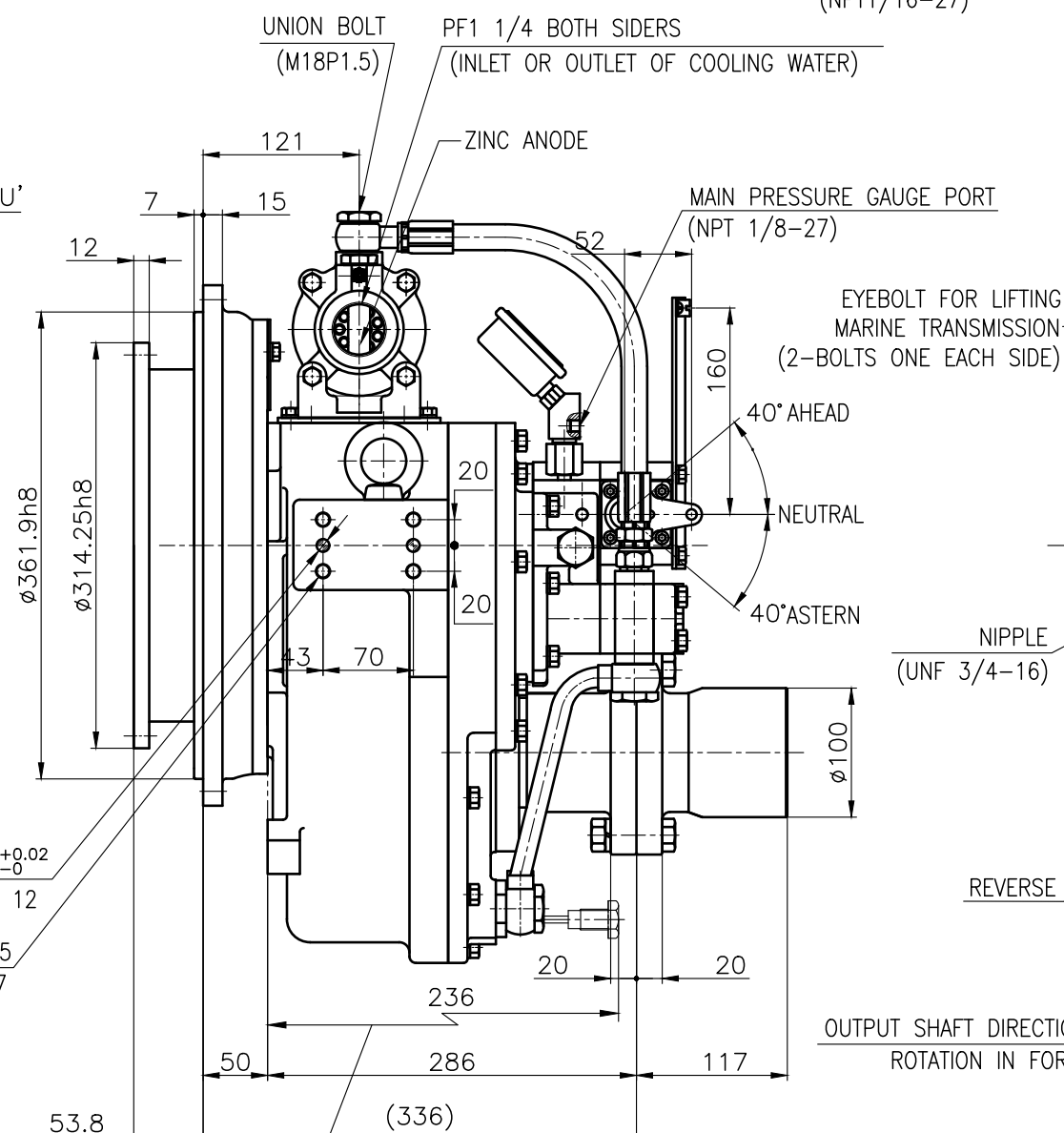
REMARK (HOT)

1.HOUSING: SAE#4

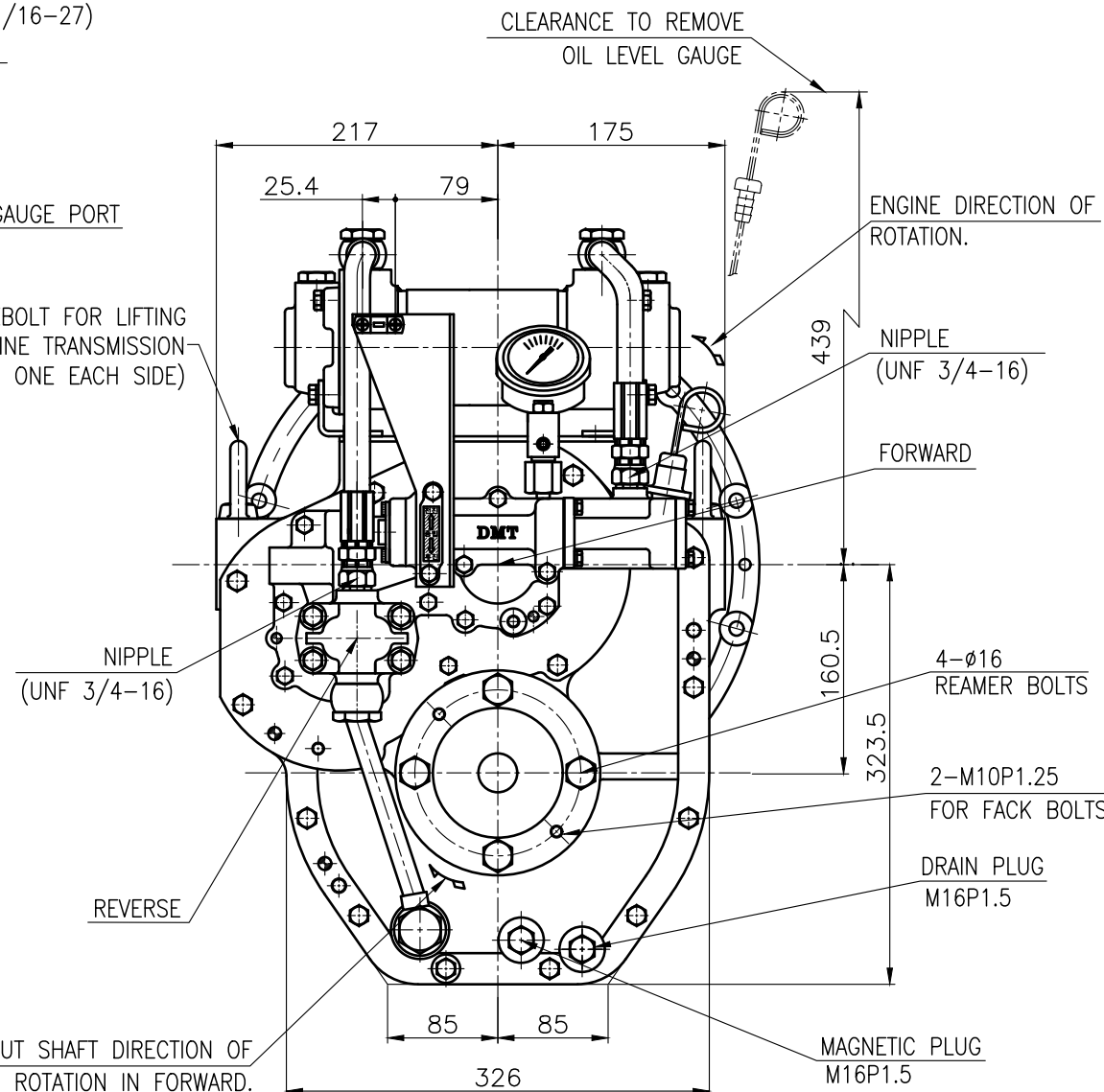
2.DRIVING RING: SAE 10"

3.COUPLING TYPE : RUBBER

4.APPLICATION ENGINE : STANDARD




CLEARANCE TO REMOVE
MAGNET PLUG



OUTPUT SHAFT DIRECTION OF
ROTATION IN FORWARD

DMT 50A MARINE GEAR SPECIFICATION			
GEAR RATIO	1.61, 2.06, 2.45, 2.82, 3.12, 3.46		
TOTAL WEIGHT	APPROX. 143 kg(DRY)		
OIL CAPACITY	APPROX. 3L		
OIL VISCOSITY	SAE # 30		
OIL PRESSURE	1.96 ~ 2.54 MPa	CLUTCH OIL	
DIRECTION OF ROTATION IN FORWARD	INPUT	C.C.W VIEWED FROM THE STERN	
	OUTPUT	C.W VIEWED FROM THE STERN	
OIL CHANGE INTERVAL	THE FIRST 100HOURS OF INITIAL OPERATION		
	AND EVERY 1000HOURS THEREAFTER		
SHIFTING LIMIT	UNDER 50% OF THE RATED ENGINE SPEED		
OIL COOLER	WATER FLOW 40 ~ 60L/min		
	TEMPERATURE OF COOLING WATER		MAX 32℃
OPERATING TORQUE OF SHIFTING LEVER		UNDER 2.94Nm	

공 동 관 차 TOLERANCE ON						번호 NO.		품 PART NO.		품 PART NAME 명		개 수 Q'TY		재 MATERIAL		규 SIZE		비 고 REMARKS	
분 수 소 수 각 도 FRACTIONS DECIMALS ANGLES ± ± ±						재 MATERIAL						형 식 TYPE		DMT50A		원 도 번 ORIGINAL DWG. NO.			
절 삭 가 공 구 태 조 금 총 금 정 금 1 초 과 4 미 하 ± 0.3 ± 0.1 ± 0.05 4 16 ± 0.5 ± 0.2 ± 0.07 16 63 ± 0.7 ± 0.3 ± 0.1 63 250 ± 1.2 ± 0.5 ± 0.2 250 1000 ± 2.0 ± 0.8 ± 0.3								작성 DATE 2018.06.20		척 도 SCALE N/S		품 명 NAME		MARINE TRANSMISSION					
						승 인 APPROVED BY		검 도 CHECKED BY		재 도 DRAWN		설 계 DESIGNED		도 번 DWG. NO.		050000A~F-410RCH		개정 (REV.) 000	
차 이 판						D-I INDUSTRIAL						크 기 SIZE		A 3		코-드 번 호 CODE ID. NO.			