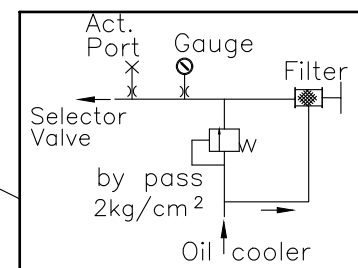
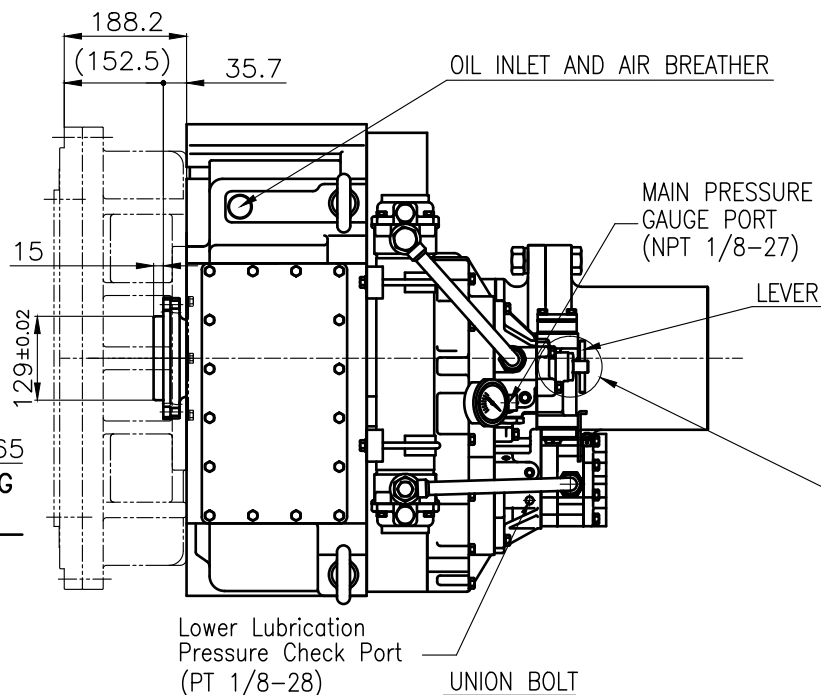
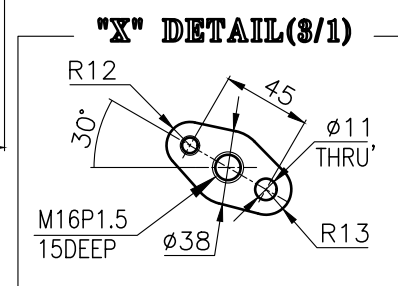
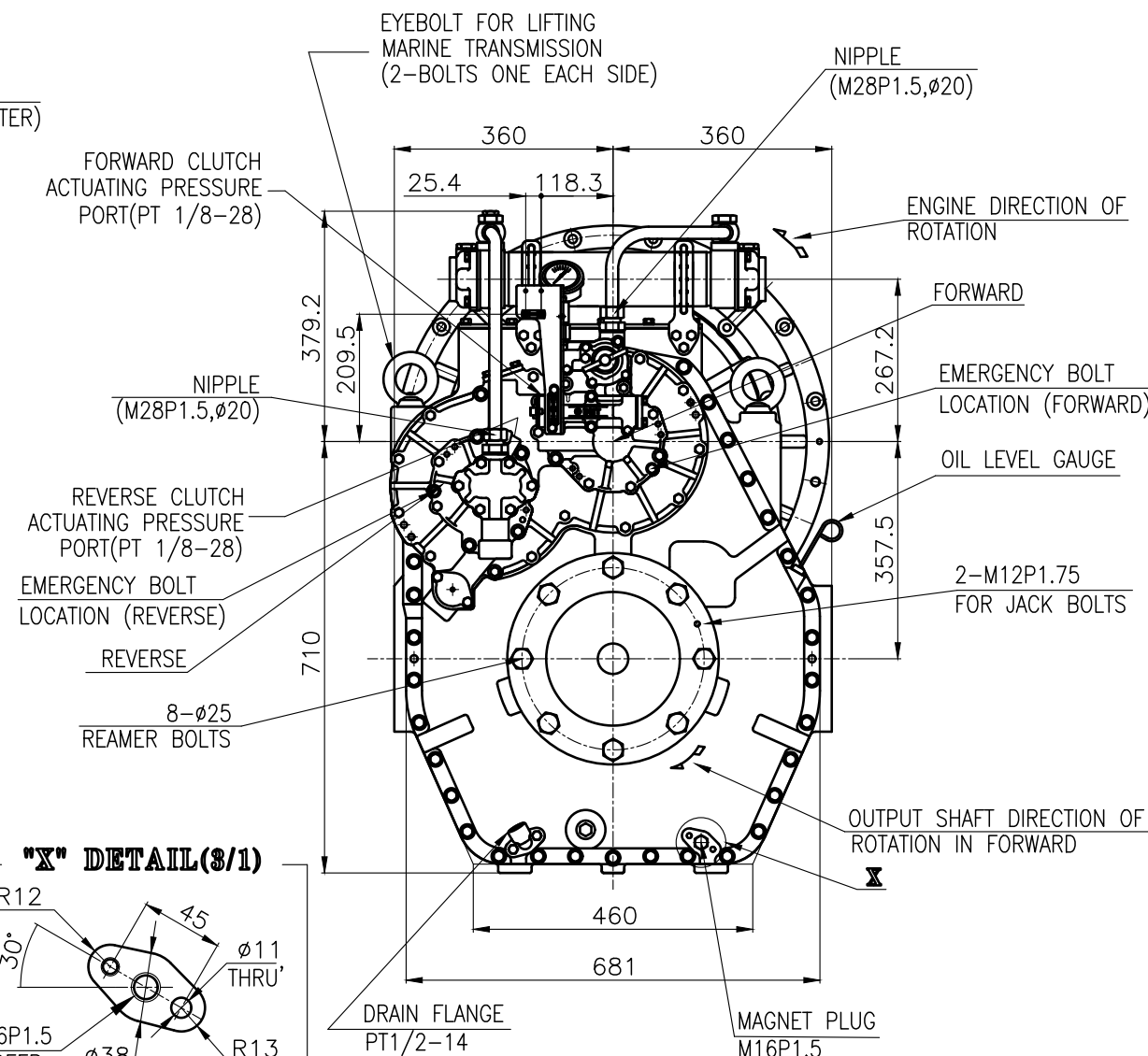
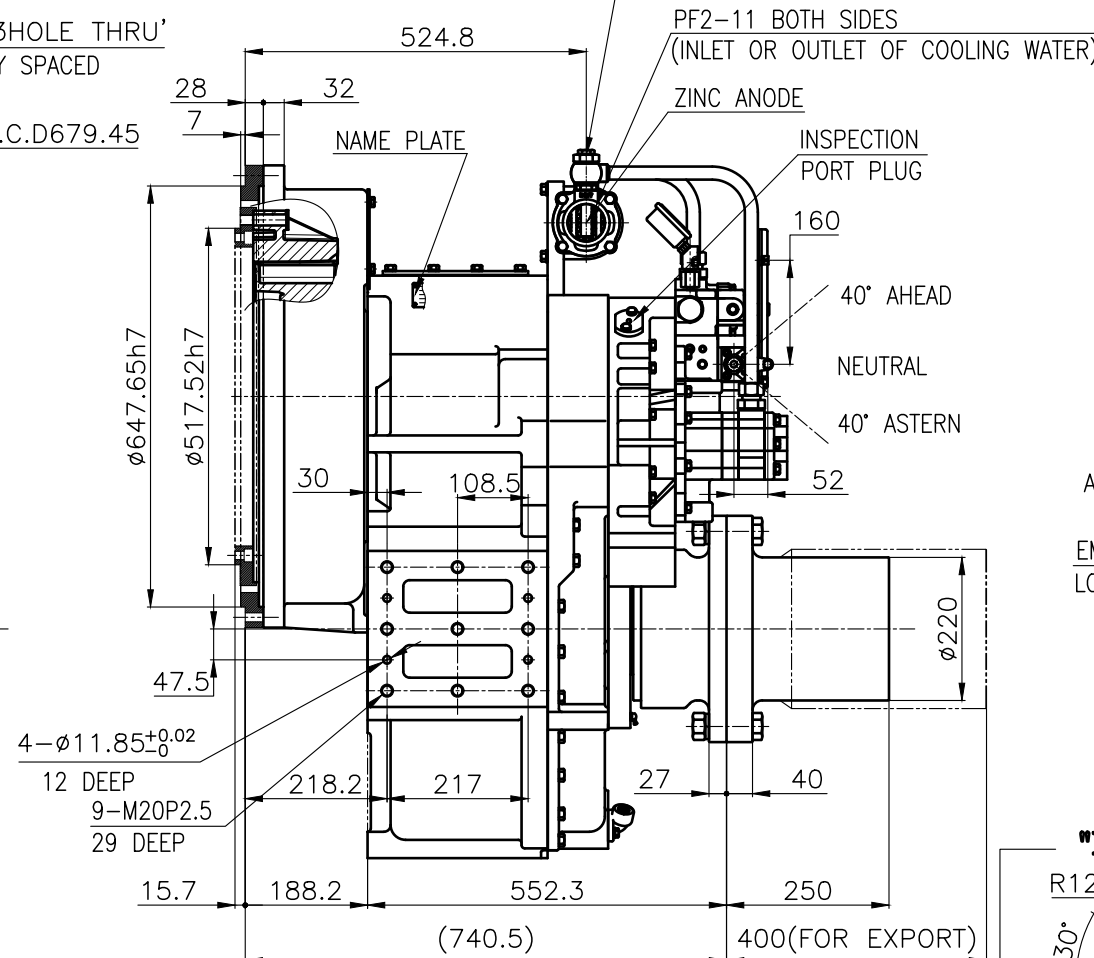
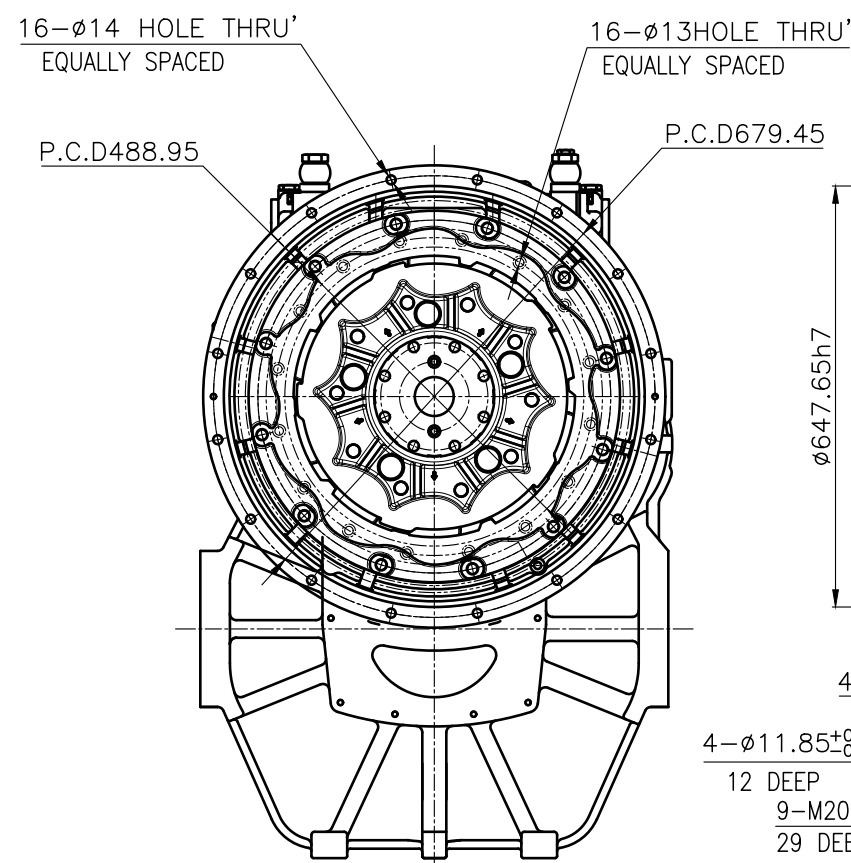


OUTPUT SHAFT COUPLING & PROPELLER COUPLING DIMENSION



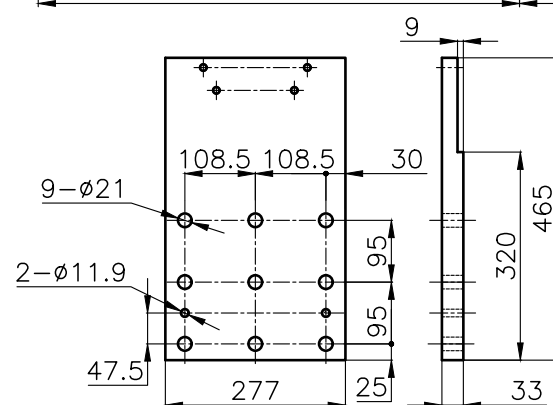
[BY PASS SYSTEM]

DMT561HL MARINE TRSANMISSION SPECIFICATION			
GEAR RATIO		3.02, 3.28, 3.56, 4.07, 4.48, 4.95	
TOTAL WEIGHT		APPROX. 977 Kg (DRY, EXCEPT FOR PROPELLER COUPLING)	
OIL CAPACITY		APPROX. 19 L	
OIL VISCOSITY		SAE # 30	
OIL PRESSURE		1.96 ~ 2.54 MPa	CLUTCH OIL
DIRECTION OF ROTATION IN FORWARD	INPUT	C.C.W VIEWED FROM THE STERN	
	OUTPUT	C.W VIEWED FROM THE STERN	
OIL CHANGE INTERVAL		THE FIRST 100HOURS OF INITIAL OPERATION	
		AND EVERY 1000HOURS THEREAFTER	
SHIFTING LIMIT		UNDER 50% OF THE RATED ENGINE SPEED	
OIL COOLER		WATER FLOW 90 ~ 120 L/m	
		TEMPERATURE OF COOLING WATER	MAX 32°C
OPERATING TORQUE OF SHIFTING LEVER			UNDER 2.94Nm

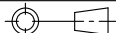


REMARK

- 1.HOUSING : SAE# 0(550904)
2.DRIVING RING : SAE 16"
3.COUPLING TYPE
-CENTA Flex Coupling : 77520802(18")
-DUMMY(for CENTA FLEX COUPLING) : 77520890
-DUMMY(for BELL HOUSING) : 550951



BRACKET DIMENSION

공용공차 TOLERANCE ON					번호 NO.		품 PART NO.		품 PART NAME		개수 Q'TY		재 MATERIAL		규 SIZE		비 고 REMARKS																							
분 수 FRACTIONS 소 수 DECIMALS 각 도 ANGLES ± — ± — ± —					재 MATERIAL						형 식 TYPE		DMT561HL		원 도 번 ORIGINAL DWG. NO.																									
<div>절삭가공</div> <table><tr><td>구분</td><td>조급</td><td>종급</td><td>정급</td></tr><tr><td>1초과 4이하</td><td>± 0.3</td><td>± 0.1</td><td>± 0.05</td></tr><tr><td>4 16</td><td>± 0.5</td><td>± 0.2</td><td>± 0.07</td></tr><tr><td>16 63</td><td>± 0.7</td><td>± 0.3</td><td>± 0.1</td></tr><tr><td>63 250</td><td>± 1.2</td><td>± 0.5</td><td>± 0.2</td></tr><tr><td>250 1000</td><td>± 2.0</td><td>± 0.8</td><td>± 0.3</td></tr></table>					구분	조급	종급	정급	1초과 4이하	± 0.3	± 0.1	± 0.05	4 16	± 0.5	± 0.2	± 0.07	16 63	± 0.7	± 0.3	± 0.1	63 250	± 1.2	± 0.5	± 0.2	250 1000	± 2.0	± 0.8	± 0.3			작성 DATE 2018.04.16		척도 SCALE 1/1		품명 NAME MARINE TRANSMISSION		도번 DWG. NO. 56100GHA~F-114CFR		개량(REV) 000	
					구분	조급	종급	정급																																
1초과 4이하	± 0.3	± 0.1	± 0.05																																					
4 16	± 0.5	± 0.2	± 0.07																																					
16 63	± 0.7	± 0.3	± 0.1																																					
63 250	± 1.2	± 0.5	± 0.2																																					
250 1000	± 2.0	± 0.8	± 0.3																																					
승인 APPROVED BY JK.Kim		검도 CHECKED BY KS.Han		재도 DRAWN GH.Park		설계 DESIGNED																																		
㊤ D-I INDUSTRIAL										크기 SIZE A 0		코드번호 CODE ID. NO.																												