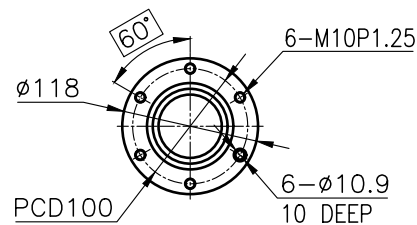
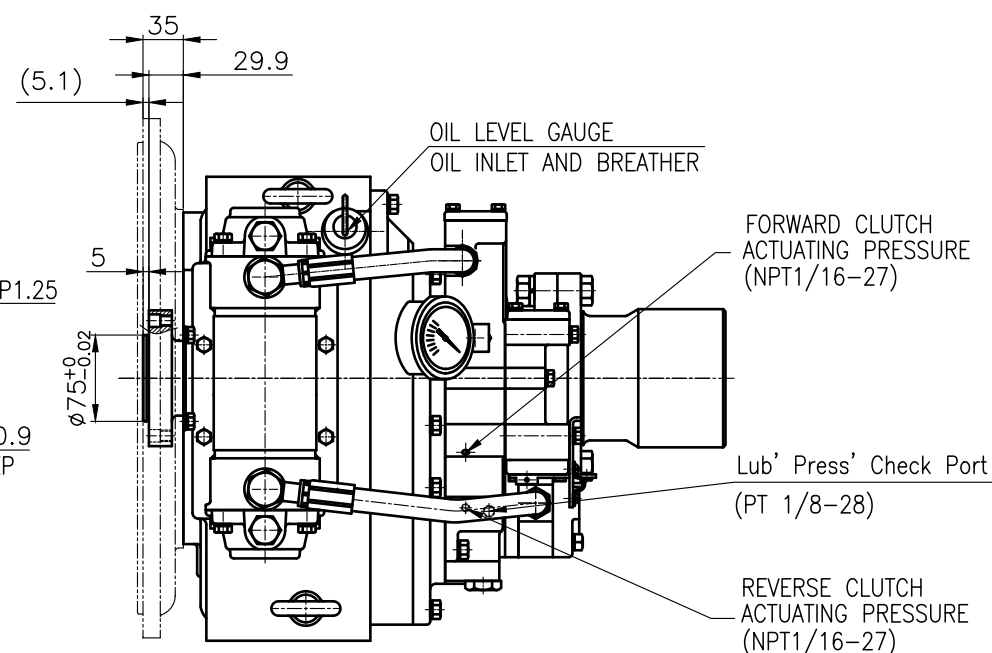


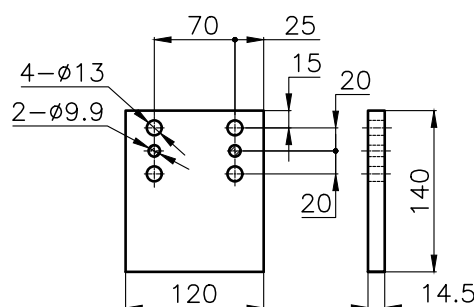
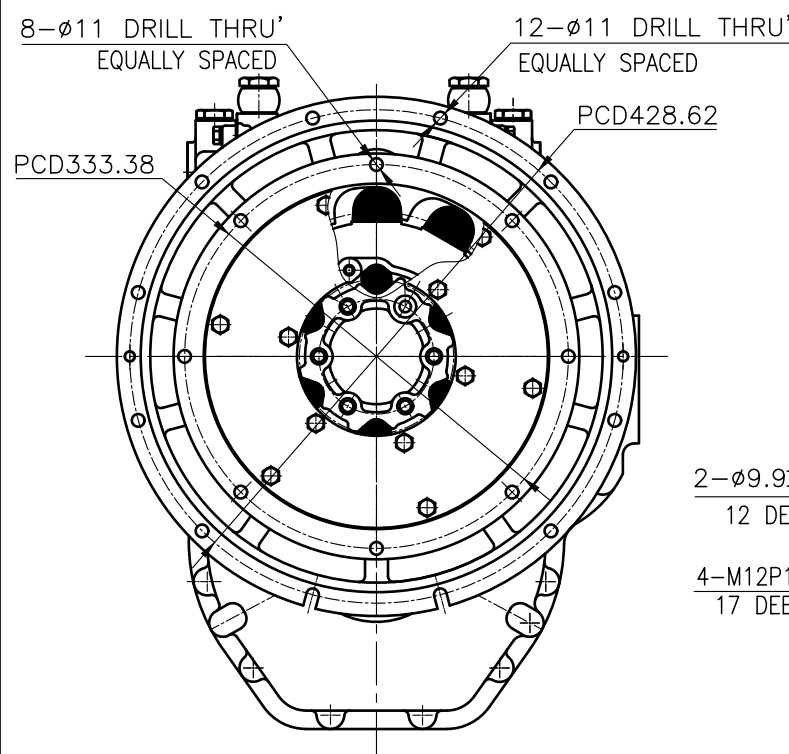
OUTPUT SHAFT COUPLING & PROPELLER COUPLING DIMENSION



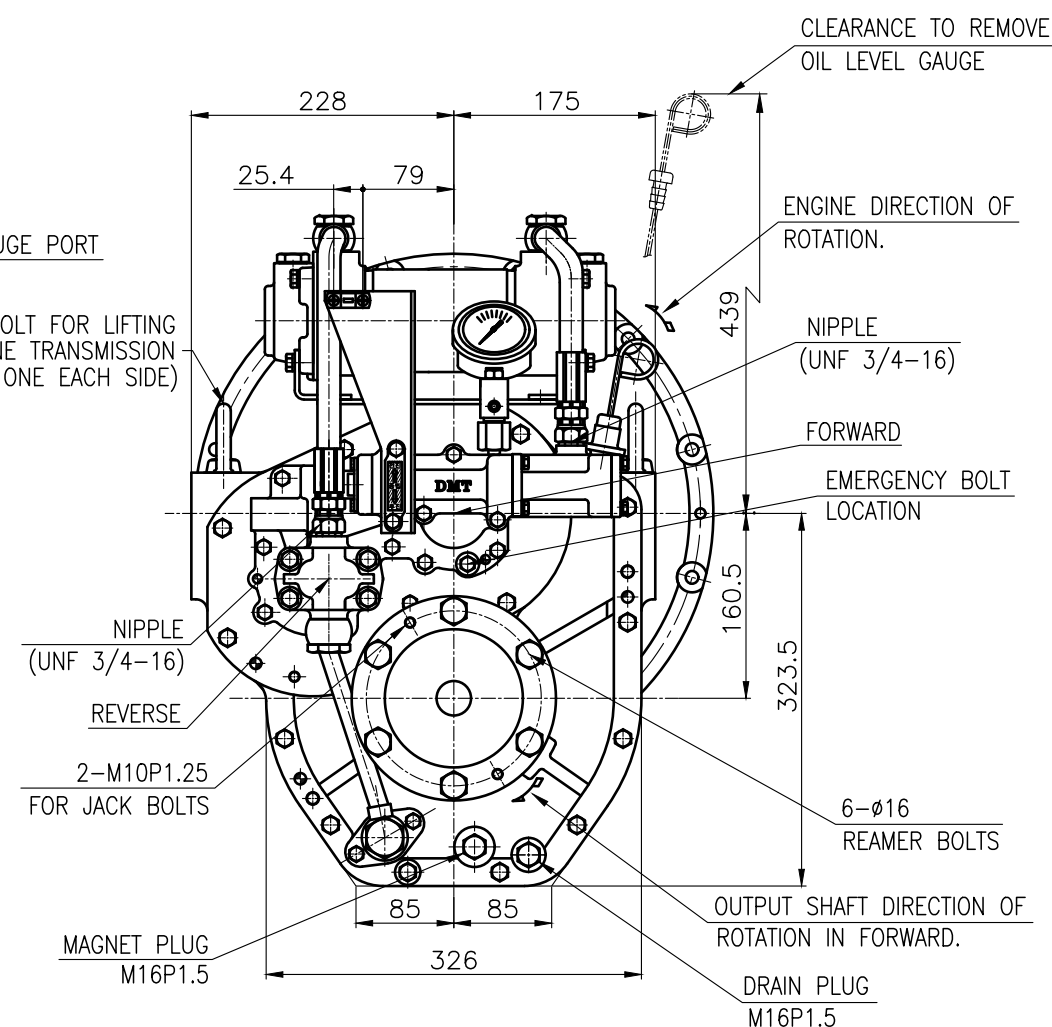
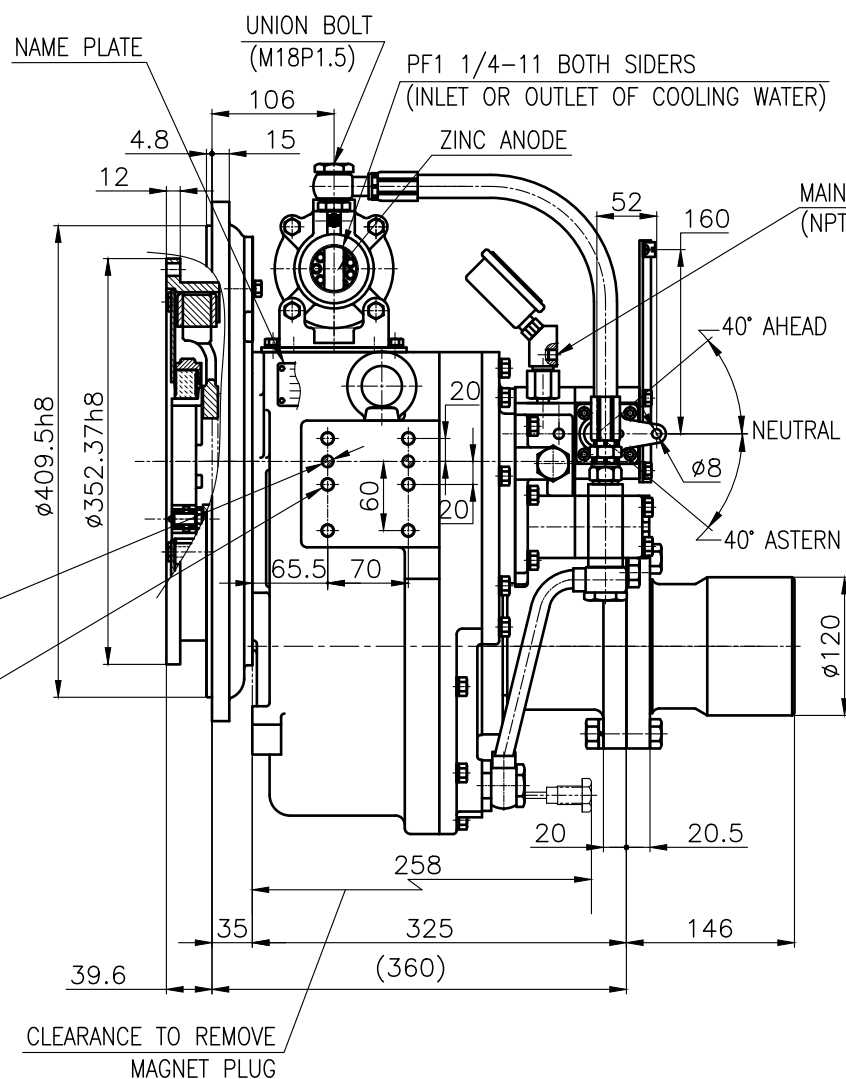
INPUT COUPLING
DIMENSION



DMT90A MARINE TRANSMISSION SPECIFICATION			
GEAR RATIO	1.61, 2.06, 2.45, 2.82, 3.12, 3.46		
TOTAL WEIGHT	APPROX 159 kg(DRY)		
OIL CAPACITY	APPROX. 3.5 L		
OIL VISCOSITY	SAE # 30		
OIL PRESSURE	1.96 ~ 2.54 MPa		CLUTCH OIL
DIRECTION OF ROTATION IN FORWARD	INPUT	C.C.W VIEWED FROM THE STERN	
	OUTPUT	C.W VIEWED FROM THE STERN	
OIL CHANGE INTERVAL	THE FIRST 100HOURS OF INITIAL OPERATION		
	AND EVERY 1000HOURS THEREAFTER		
SHIFTING LIMIT	UNDER 50% OF THE RATED ENGINE SPEED		
OIL COOLER	WATER FLOW 40 ~ 60 L/min		
	TEMPERATURE OF COOLING WATER		MAX 32 °C
OPERATING TORQUE OF SHIFTING LEVER			UNDER 2.94Nm

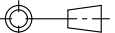


BRACKET DIMENSION



REMARK (HOT)

- 1.HOUSING: SAE#3
2.DRIVING RING: SAE 11.5"
3.COUPLING TYPE : DUAL STAGE
4.APPLICATION ENGINE : STANDARD

공 동 공 차 TOLERANCE ON					번 호 NO.		품 PART NO.		명 PART NAME		개 수 Q'TY		재 질 MATERIAL		규 SIZE		비 고 REMARKS	
분 수 소 수 각 도 FRACTIONS DECIMALS ANGLES ± — ± — ± —					재 질 MATERIAL							형 식 TYPE		DMT90A		원 도 번 고 ORIGINAL DWG. NO.		
절 삭 가 공					 작 성 DATE 2018.06.20		척 도 SCALE N/S		품 명 NAME		MARINE TRANSMISSION		도 번 DWG. NO.		090000GA~F-3115DCH		계 정 (REV) 000	
					승 인 APPROVED BY		검 도 CHECKED BY											
일 구 편 조 급 종 급 정 급 1 초 과 4 이 하 ± 0.3 ± 0.1 ± 0.05 4 16 ± 0.5 ± 0.2 ± 0.07 16 63 ± 0.7 ± 0.3 ± 0.1 63 250 ± 1.2 ± 0.5 ± 0.2 250 1000 ± 2.0 ± 0.8 ± 0.3					JK.Kim		TH.Cha		BJ.Moon		크 기 SIZE		A 3		코 드 번 호 CODE ID. NO.			
㊤ D-I INDUSTRIAL																		