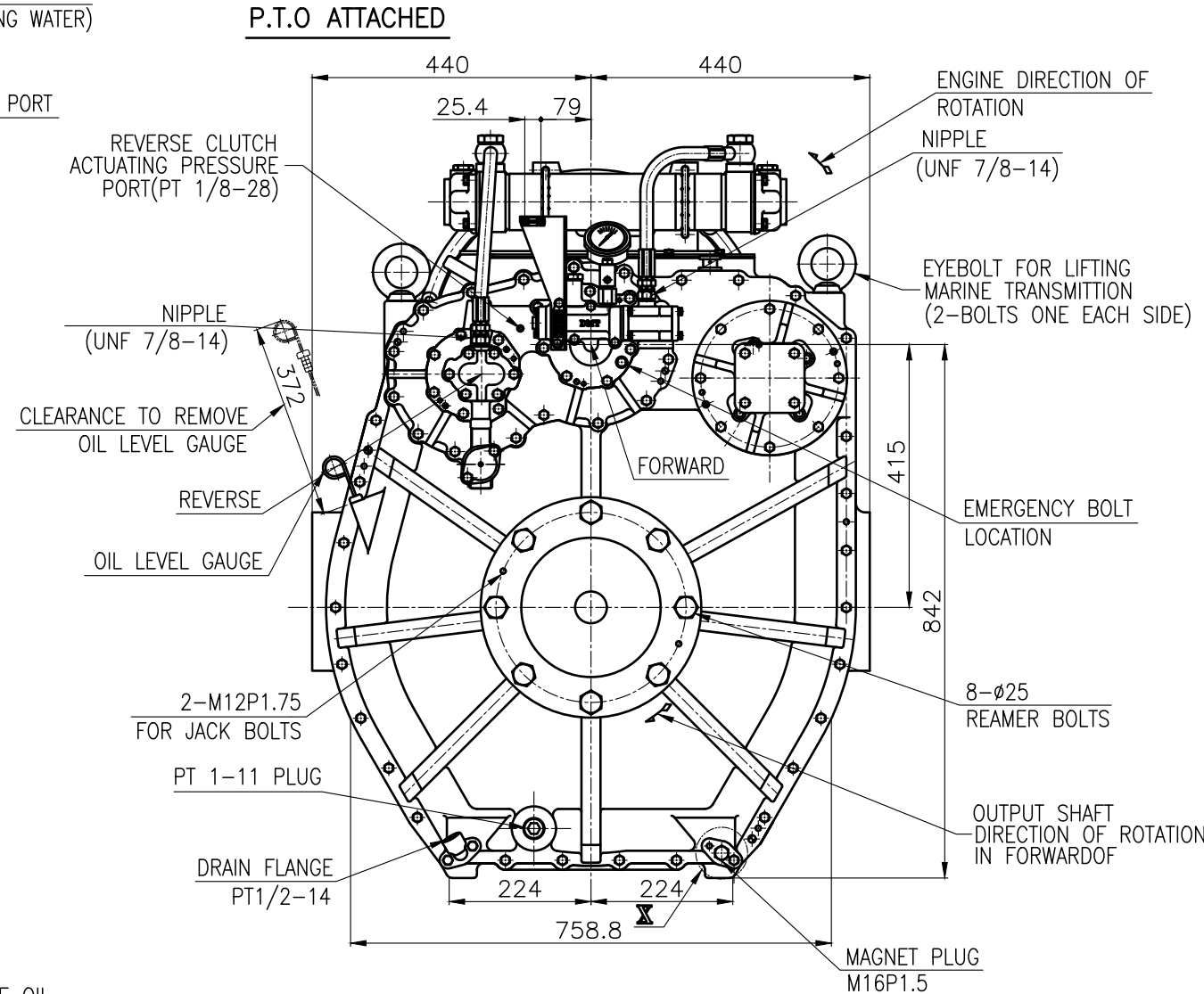
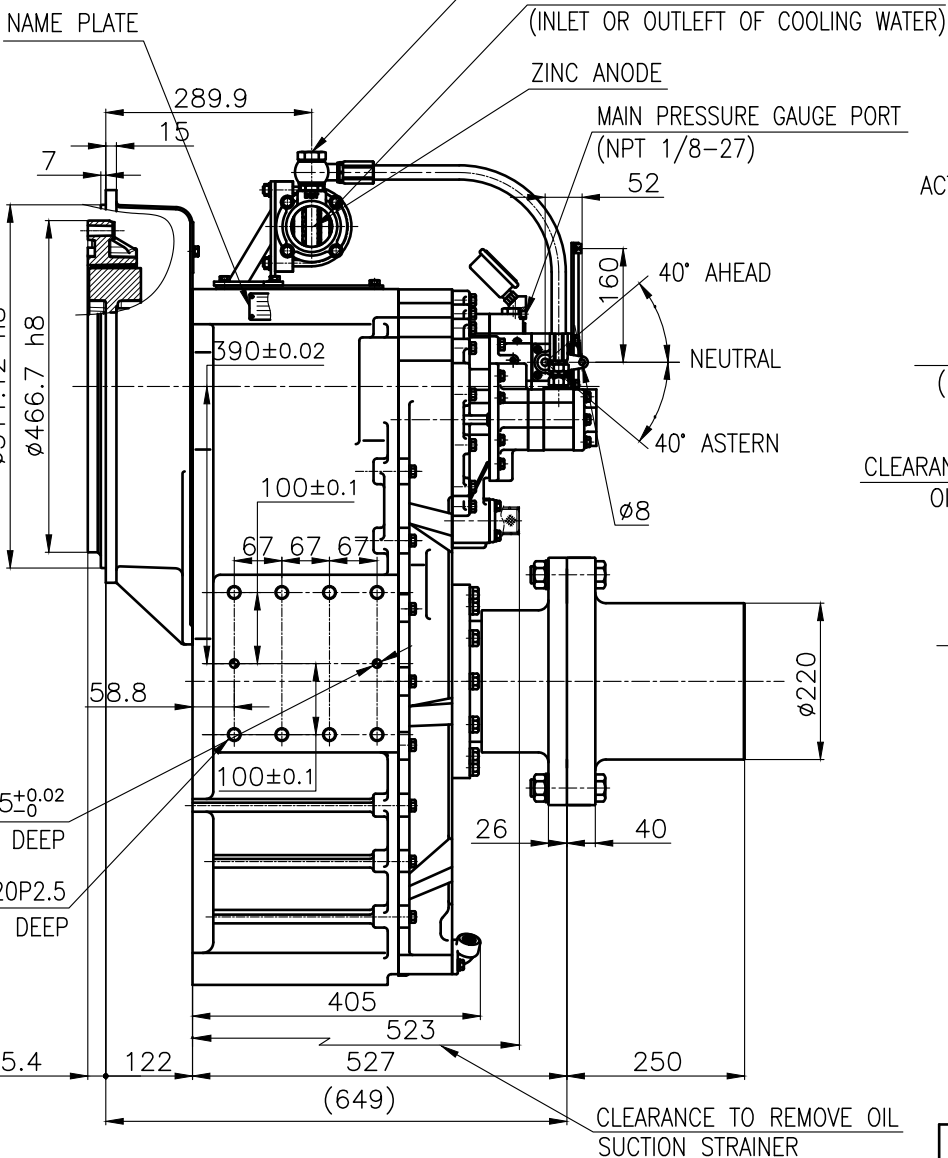
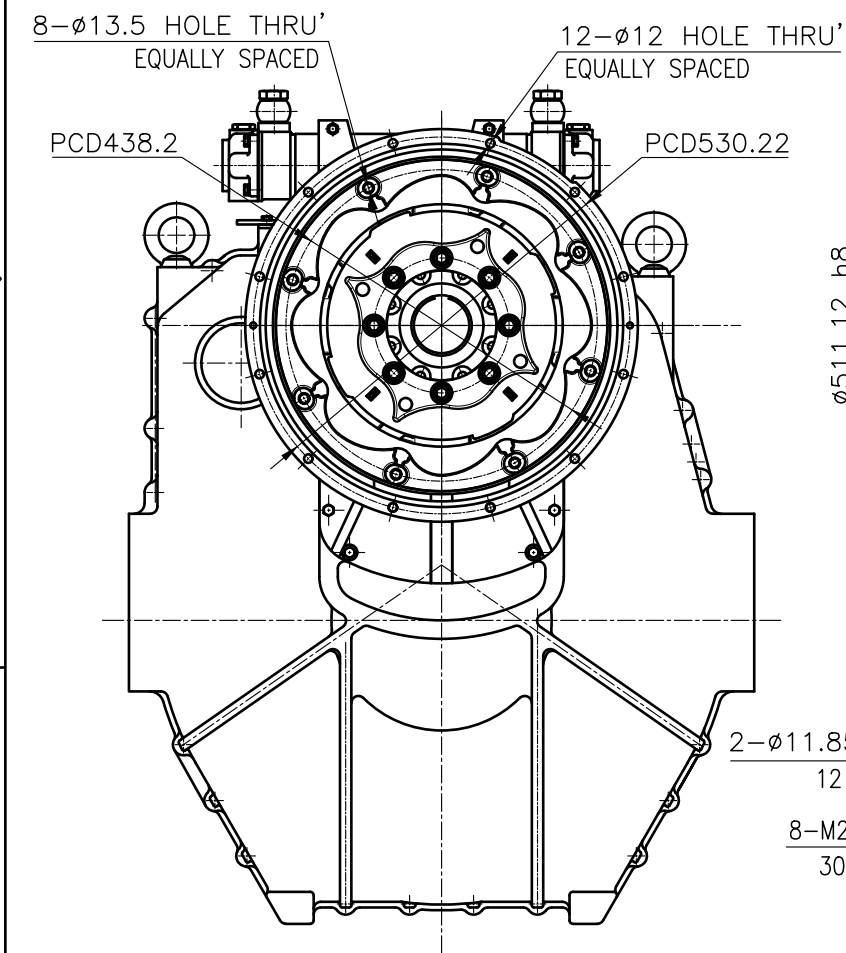
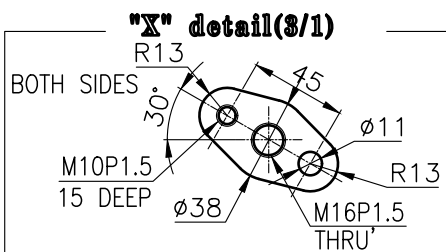
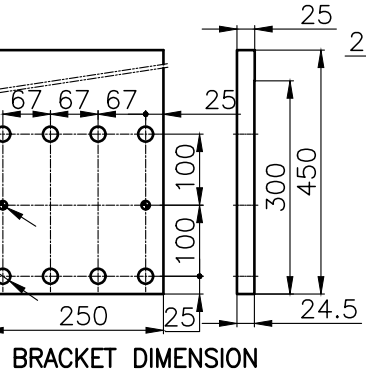


DMTP 6500 MARINE TRANSMISSION SPECIFICATION			
GEAR RATIO	5.11, 5.62, 5.91, 6.57, 6.95		
TOTAL WEIGHT	APPROX. 900 Kg(DRY)		
OIL CAPACITY	APPROX. 40 L		
OIL VISCOSITY	SAE # 30		
OIL PRESSURE	1.96 ~ 2.54 MPa	CLUTCH OIL	
DIRECTION OF ROTATION IN FORWARD	INPUT	C.C.W VIEWED FROM THE STERN	
	OUTPUT	C.W VIEWED FROM THE STERN	
OIL CHANGE INTERVAL	THE FIRST 100HOURS OF INITIAL OPERATION		
	AND EVERY 1000HOURS THEREAFTER		
SHIFTING LIMIT	UNDER 50% OF THE RATED ENGINE SPEED		
OIL COOLER	WATER FLOW 40 ~ 60 L/m		MAX 32°
	TEMPERATURE OF COOLING WATER		
OPERATING TORQUE OF SHIFTING LEVER		UNDER 2.94Nm	



REMARK
1. HOUSING: SAE#1
2. DRIVING RING: SAE 14"
3. COUPLING TYPE
-CENTA Flex Coupling : 77268801



공통공차 TOLERANCE ON					번호 NO.	품 PART NO.	품 PART NAME	개 수 Q'TY	재 질 MATERIAL	규 격 SIZE	비 고 REMARKS		
분 수 FRACTIONS					제 MATERIAL				형 식 TYPE	DMTP6500	원 도 번 ORIGINAL DWG. NO.		
소 수 DECIMALS					작 성 DATE 2018.06.29		척 도 SCALE N/S						
각 도 ANGLES						승 인 APPROVED BY	검 도 CHECKED BY	제 도 DRAWN	설 계 DESIGNED	품 명 NAME	MARINE TRANSMISSION		
±	±	±	±	도 DWG. NO.								65000GA~E-114CFR	
일 반 평 가 자	절 사 가 공				D-I INDUSTRIAL						크 기 SIZE	A 3	코-드 번 호 CODE ID. NO.
	구 분	조 급	중 급	정 급									
	1 초과 4 이하	± 0.3	± 0.1	± 0.05									
	4 16	± 0.5	± 0.2	± 0.07									
	16 63	± 0.7	± 0.3	± 0.1									
63 250	± 1.2	± 0.5	± 0.2										
250 1000	± 2.0	± 0.8	± 0.3										
											개 정 (REV.) 000		